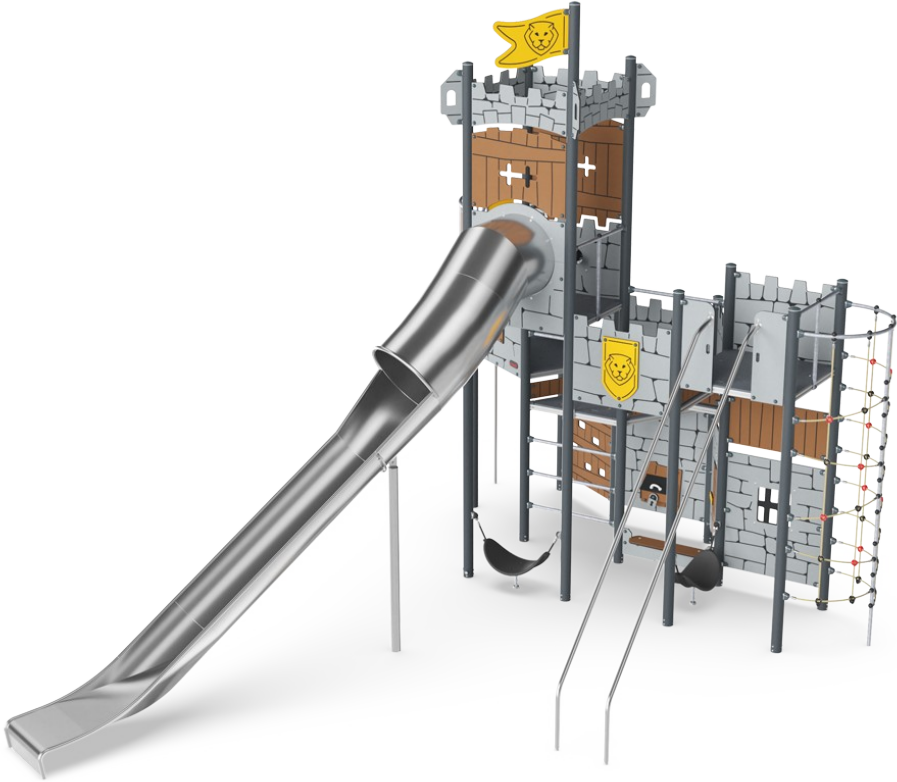


# Castle Fortress

PCM113021



The Castle Fortress provides for play challenges and lots of varied movement. This fortress will inspire young children to challenge themselves to play actively and imaginatively, using their muscles to climb to the top and slide down to the ground. The climbing net provides a variation in climbing, developing children's cross-coordination, which in turn supports

intellectual development. The wild slide is a thrilling ride, training children's balance skills. The bannister bars are great for dare-devils, building up proprioception and sense of balance. These are fundamental in children's ability to navigate the world securely. The cellars of the Castle Fortress inspire creative and dramatic play. Special surprises such as

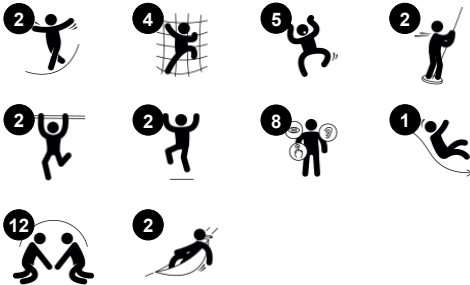
the treasure chest and prison window will be a constant attraction, stimulating social play and language development. Swaying hammocks add a possibility for a break with friends.



产品编号 PCM113021-0901

## 产品信息概览

长宽高尺寸	783x530x561 cm
适用年龄段	4+
容纳人数	30
颜色选择	



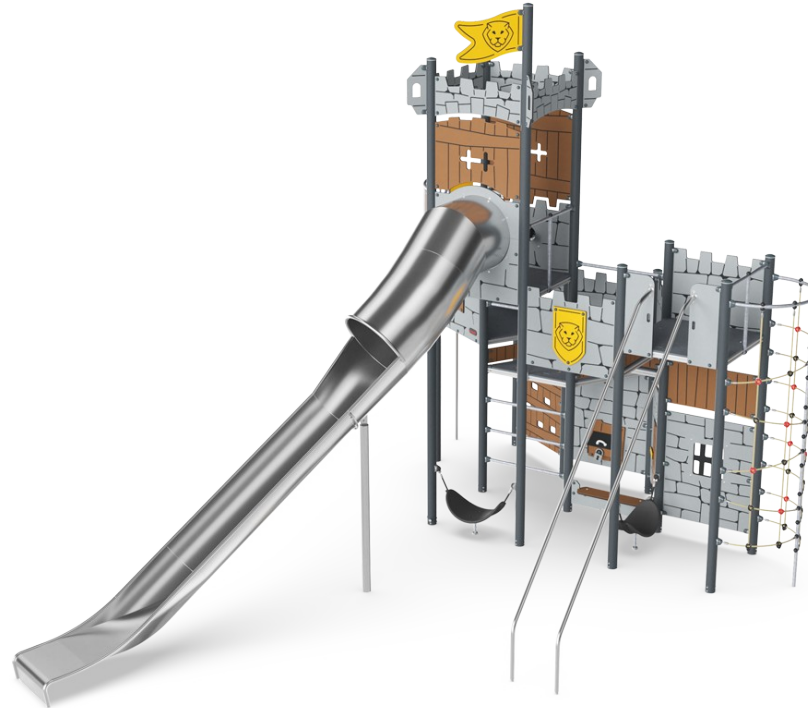
# Castle Fortress

PCM113021



## 游戏主题

**认知能力：**鼓励戏剧游戏，刺激儿童语言和交流能力的发展。



## Tower net

**身体素质：**the children have fast access up the horizontal rungs, and a slower climb up the sloping rungs. The net can be climbed from both sides, levelling the challenge. Cross coordination, and arm and leg muscles are trained. **社交情感：**the two-sided net and spaciousness allows for social interaction. **认知能力：**logical thinking when planning how to best enter the platform from the net.



## 摇摆座椅

**身体素质：**摇摆时的协调性和平衡感。 **社交情感：**和朋友见面，轻轻地前后推朋友，轮流玩耍。 **认知能力：**让幼儿理解因果关系。



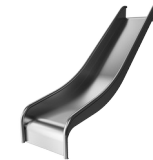
## Banister bars

**身体素质：**跳下来时，身体的协调性、手臂和核心肌肉都会得到发展。落地运动可增强骨密度，为童年生活做好准备。 **社交情感：**训练轮流意识和风险意识。



## Treasure box

**认知能力：**object permanence: hiding objects and finding them again. Spurs exploration and dramatic play, stimulating conversations.



## 滑梯

**身体素质：**玩滑梯可以培养空间感和平衡感。此外，在直立向下坐时，核心肌肉也能得到锻炼。 **社交情感：**轮流玩耍时可激发同理心。



## Fireman's pole

**身体素质：**coordination is supported when going down, as well as arm and core muscles. Landing strengthens bone density, which is built for life in early childhood. **社交情感：**训练轮流意识和风险意识。

# Castle Fortress

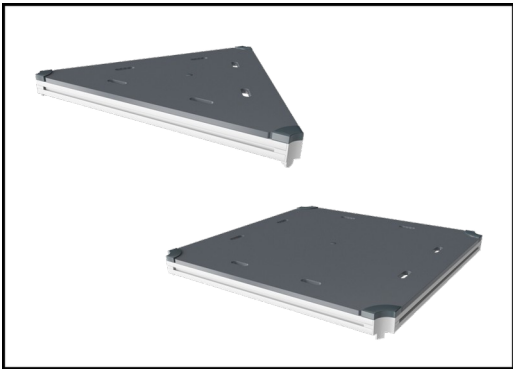
PCM113021



19 毫米 EcoCore™ 面板。EcoCore™ 是一种高度耐用、环保的材料，不仅在使用后可回收利用，而且还包含由 100 % 食品包装可循环材料制成的芯。



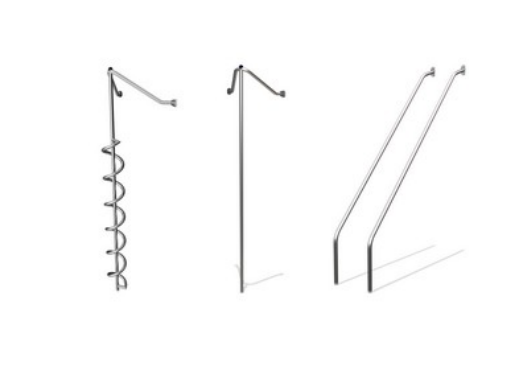
具有热浸镀锌钢脚的主立柱有不同的材料可供选择：压力浸渍松木立柱；在内外进行了预镀锌处理，顶部涂有粉末涂层的钢柱；无铅铝，表面阳极氧化处理。



所有平台底板均由独特设计的低碳铝型材支撑，并具有多种加配选择。灰色模制平台底板由 75% 消费后的海洋可循环 PP 材料制成，具有防滑图案和表面纹理。



可以选择不同材质和颜色的滑梯：黄色或灰色的直形或弧形 PE 滑梯；一体式设计中的全不锈钢，提供更多的防破坏解决方案。



不锈钢游戏活动部件由优质不锈钢制成。在制造后使用酸洗工艺对钢进行清洁，以确保光滑和清洁的顺滑表面。



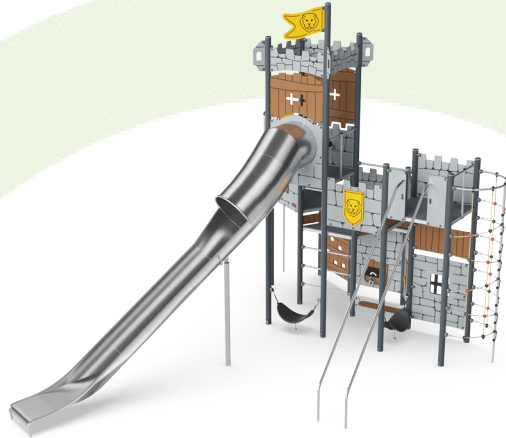
网和绳索由防紫外线的 PA 制成，并带有内部钢缆增强件。钢丝绳经过感应处理，以在钢丝绳和钢丝绳之间建立牢固的连接，从而导致良好的耐磨性。

产品编号 PCM113021-0901	
安装信息	
最大跌落高度	300 cm
安全面积	70.1 m²
安装总时长	36.2
开挖量	1.43 m³
混凝土使用量	0.47 m³
标准入地深度	90 cm
运输重量	1,589 kg
固定选项	入地 ✓ 地表 ✓
质保信息	
EcoCore HDPE	终身质保
立柱	10 年
PP 板	10 年
绳网	10 年
承保零部件	10 年



# Sustainability Data

PCM113021



## 从原材料到成品

CO<sub>2</sub> 排放总量

CO<sub>2</sub> 排放量  
/ 千克

回收的原料

kg CO<sub>2</sub>e

kg CO<sub>2</sub>e/kg

%

PCM113021-0901

3,586.60

2.93

59.50

这些因素采用的总体框架为环保产品声明 (EPD)，该声明可量化“产品生命周期的环保信息，并对相同功能的产品进行对比” (ISO, 2006)。在遵循该框架的同时，对从原材料到制造的整个产品阶段 (A1-A3) 应用生命周期评估法。

**KOMPAN**  
Let's play

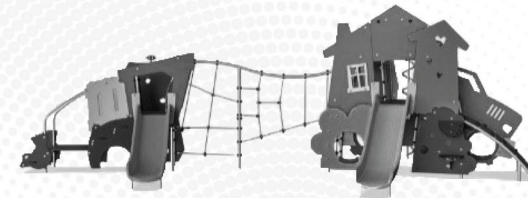
## Kompan A/S

C.F. Tietgens Boulevard 32C  
DK-5220 Odense SØ  
Denmark

Validation of CO<sub>2</sub>  
calculation method  
**BUREAU VERITAS**  
HSE Denmark A/S



## Verification of CO<sub>2</sub> calculation of: Themed play systems



Data version no. 2023-10-05

The CO<sub>2</sub> calculation and data are in compliance with the principles of a carbon footprint impact according to the GHG protocol (Greenhouse Gas Protocol), Scope 3, cradle to gate related to all individual components in the product category: "Themed play systems" represented by item no.: MSC641100-3717P.

(Scope 3 emissions include emission sources in the upstream and downstream value chain).

**Date: 30. October 2023 | Valid until: 30. October 2025**

**Verified by:**

Julie Marie Vejsgaard Larsen, LCA & EPD Consultant

Verification based on report: Validation of CO<sub>2</sub> calculation of 9 categories of Kompan product line, version 1.0, prepared by: Bureau Veritas HSE, Denmark: Julie M. V. Larsen.

**Publication date: 30. October 2023**

By Bureau Veritas HSE  
www.bureauveritas.dk  
+45 7731 1000





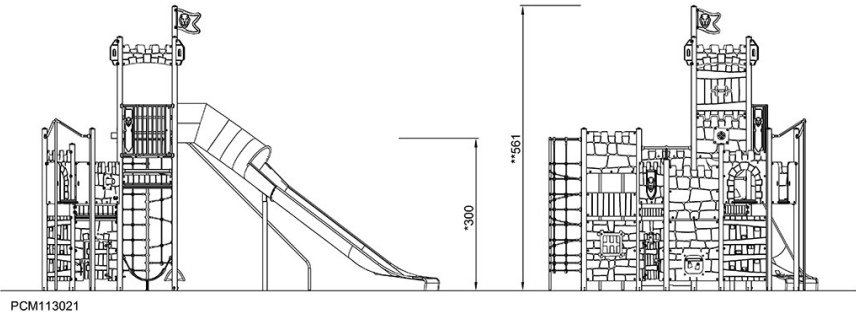
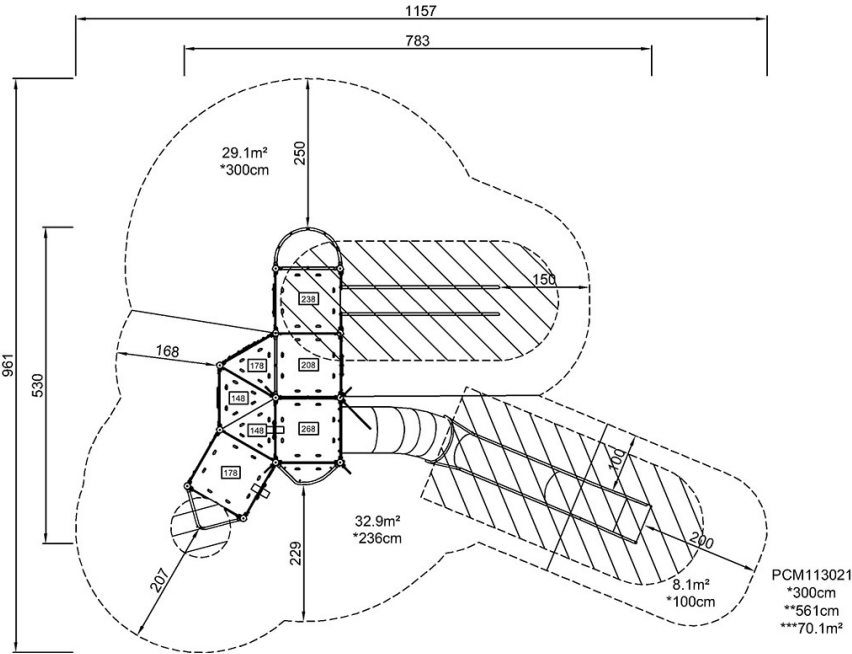
# Castle Fortress

PCM113021



最大跌落高度 | 总高度 | 安全区域

最大跌落高度 | 总高度



[点击查看俯视图](#)

[点击查看侧面图](#)