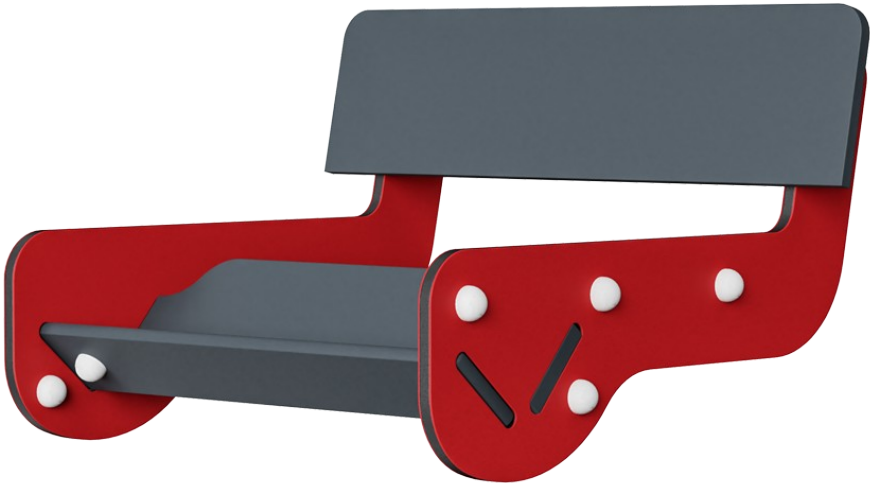



Multi-Seesaw Support Seat

M147



Item no. M14701-00P	
General Product Information	
Dimensions LxWxH	2'11"x2'7"x1'9"
Age group	2 - 12
Play capacity (users)	-
Color options	



The Support Seat for the double seesaws from KOMPAN is a clever, universal design replacement of either seat end. It can be used by all children. The foot and calf support gives a sturdy and firm footrest which also functions well for children with leg impairments or motor disabilities. The back support additionally supports the child's seated position well

ergonomically. The open sides ease the entrance into the seat. It allows for caregivers or parents to join in play. The dimensions of the Support Seat allow children from around age 4 and up, with leg impairments or mobility disabilities, to place their feet in the footrest and stem their bodies into the back support and thus set the seesaw into motion. This is

highly satisfying to children who are not used to controlling play equipment movement independently. And additionally, it trains all children's feeling of being in control in play.

Multi-Seesaw Support Seat

M147



Seat, extra foot and back support

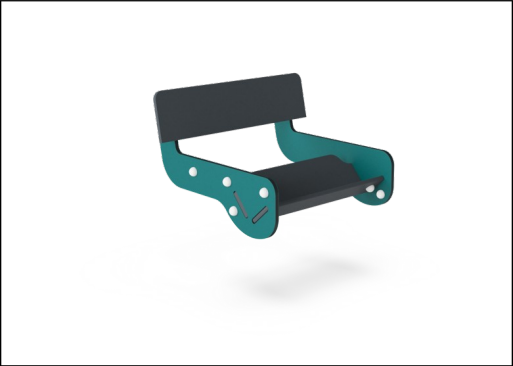
Physical: extra back and foot support for children with mobility challenges. Rocking promotes sense of balance and space, both important in navigating the body in space. Arms and leg muscles strengthened when holding tight and pushing with legs. **Social-**

Emotional: socializing and cooperation, support for all abilities.



Multi-Seesaw Support Seat

M147



Panels of 19mm EcoCore™. EcoCore™ is a highly durable, eco friendly material, which is not only recyclable after use, but also consists of a core produced from 100% recycled material.

KOMPAN GreenLine versions are designed with the most environmentally friendly materials with the lowest possible CO2e emission factor such as EcoCore™ panels of 100% post-consumer recycled ocean waste.

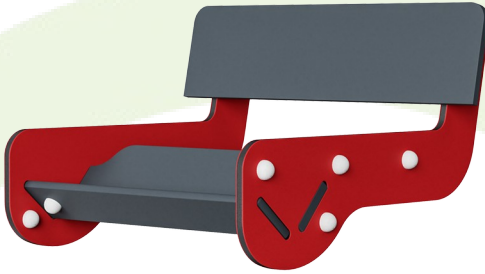
Item no. M14701-00P	
Installation Information	
Max. fall height	0'0"
Safety surfacing area	0ft²
Total installation time	2.1
Excavation volume	0yd³
Concrete volume	0yd³
Footing depth (standard)	0'0"
Shipment weight	48lbs
Anchoring options	
Warranty Information	
EcoCore HDPE	Lifetime
Spare Parts Availability	10 Years

Elevated activities 0	Accessible elevated activities	Accessible ground level activities	Accessible ground level play types
Present	0	0	0
Required	0	0	0



Sustainability Data

M147



Cradle to Gate A1-A3	Total CO ₂ emission	CO ₂ e/kg	Recycled materials
	kg CO ₂ e	kg CO ₂ e/kg	%
M14701-00P	49.10	2.15	28.90

The overall framework applied for these factors is the Environmental Product Declaration (EPD), which quantifies "environmental information on the life cycle of a product and enable comparisons between products fulfilling the same function" (ISO, 2006). This follows the structure and applies a Life-Cycle Assessment approach to the entire Product stage from raw material through manufacturing (A1-A3))

Kompan A/S

C.F. Tietgens Boulevard 32C
DK-5220 Odense SØ
Denmark



Verification of CO₂ calculation of: Freestanding play equipment



Data version no. 2023-10-05

The CO₂ calculation and data are in compliance with the principles of a carbon footprint impact according to the GHG protocol (Greenhouse Gas Protocol), Scope 3, cradle to gate related to all individual components in the product category: "Freestanding play equipment" represented by item no.: GXY916012-3417.

(Scope 3 emissions include emission sources in the upstream and downstream value chain).

Date: 30. October 2023 | Valid until: 30. October 2025

Verified by:

Julie Marie Vejsgaard Larsen, LCA & EPD Consultant

Verification based on report: Validation of CO₂ calculation of 9 categories of Kompan product line, version 1.0, prepared by: Bureau Veritas HSE, Denmark: Julie M. V. Larsen.

Publication date: 30. October 2023

By Bureau Veritas HSE
www.bureauveritas.dk
+45 7731 1000

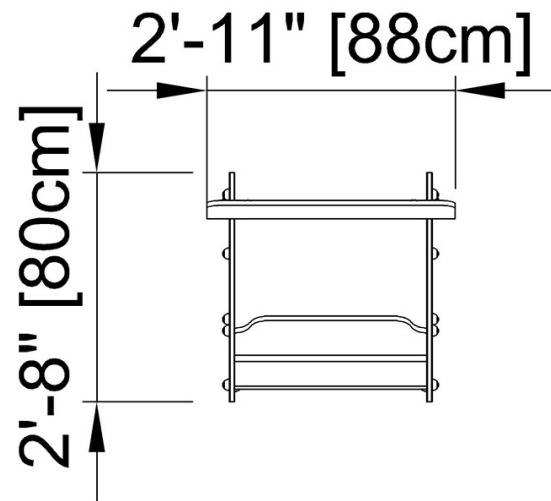


Multi-Seesaw Support Seat

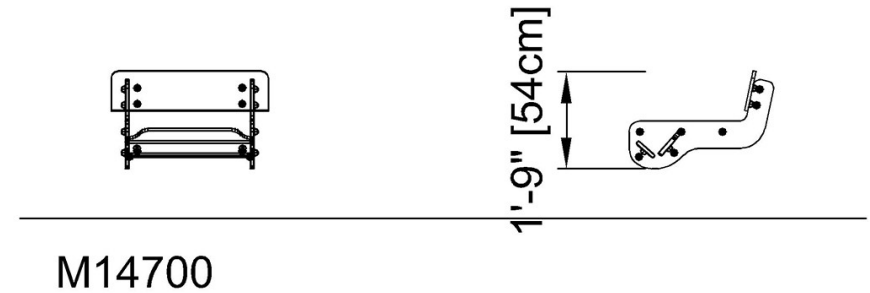
M147

* Max fall height | ** Total height | *** Safety surfacing area

* Max fall height | ** Total height



M14700



[Click to see TOP VIEW](#)

[Click to see SIDE VIEW](#)