

Shop & Construction, ADA


MSC6424

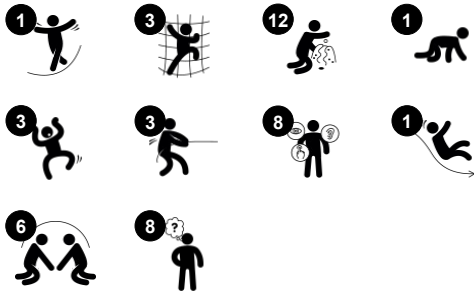


The shop and construction themes greatly appeal to children's urge for dramatic play stories. The ground level shop counter and clock make this playground an absolute winner with all children. Thanks to the two-sided theme, tactile elements, and the wide, accessible stairway this play structure will provide hours and hours of play for all. The rich

variety of details include play scoops, spheres, clocks and more, all of which inspire a multitude of play stories and train fine motor skills. They also promote logical thinking and language development, when children explore and find out how to use them and share their findings with friends. Being double sided inspires exploration and makes for great play

capacity: you can play from the outside too! The wide choice of climbing events and the slide train motor skills, such as cross-coordination and balance, important for body movement and confidence.

| | |
|-----------------------------|---|
| Item no. MSC642400-3717P | |
| General Product Information | |
| Dimensions LxWxH | 524x339x289 cm |
| Age group | 2+ |
| Play capacity (users) | 22 |
| Colour options |  |



Shop & Construction, ADA

MSC6424



Theme

Cognitive: suggests a theme and supports dramatic play, which stimulates language and communication skills.



Den

Physical: crawling through the possible openings trains spatial awareness. **Social-Emotional:** the enclosed space invites social play for two or three children.



Accessible stairway

Physical: climbing the accessible stairway is for all and supports cross coordination as well as arm and leg muscles. **Social-Emotional:** room for active breaks and adult helpers. An inclusive space.



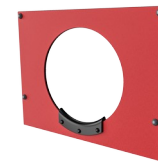
Play sphere

Social-Emotional: can be played from both sides, encouraging cooperation. **Cognitive:** cause and effect understanding. **Creative:** leave a mark and place the spheres at different positions.



Curved climbing wall

Physical: children develop their cross-body coordination, proprioception and leg, arm and hand strength. Climbing on a curved surface challenges muscles.



Crawl-through hole

Physical: the hole allows for climbing and crawling through, developing cross coordination, proprioception and spatial awareness. **Social-Emotional:** cooperation and turn-taking when passing one another. **Cognitive:** understanding space, shape and measures when seeing if the body can fit through the hole.



Slide

Physical: develops spatial awareness, sense of balance and trains core muscles when sitting upright going down. **Social-Emotional:** empathy stimulated by turn-taking. **Cognitive:** young children develop their understanding of space, speed and distances when sliding down.

Shop & Construction, ADA

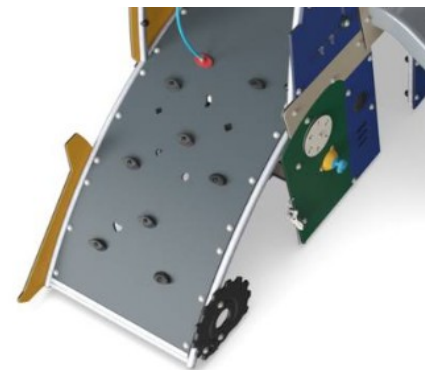
MSC6424



Panels of 19mm EcoCore™. EcoCore™ is a highly durable, eco-friendly material, which is not only recyclable after use but also consists of a core produced from 100% recycled material.



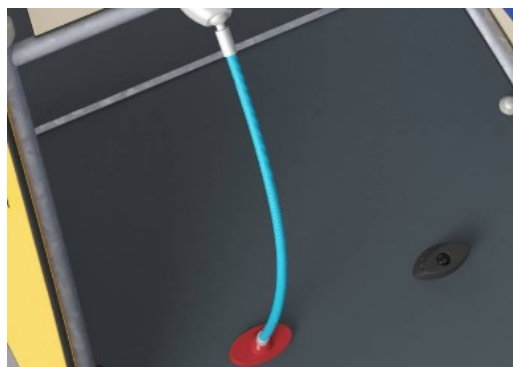
All floors are made from high-pressure laminate HPL with a thickness 17.8mm and non-skid surface texture. KOMPAN HPL is high wearing and suitable for all climates.



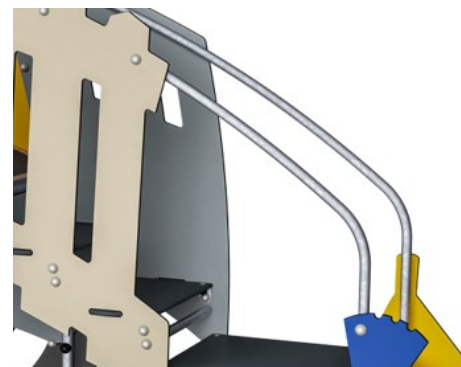
The curved climbing wall is made of Ekogrip® panel that consists of a 15mm thick PE base with 3 mm top-layer of soft rubber with a non-skid effect.



The slide is made of moulded PE, which has high impact resistance across a wide temperature span and is vandal resistance.



Ropes are made of UV-stabilized PP rope strands with inner steel cable reinforcement. Horizontal ropes are PUR coated to obtain good wear and tear resistance.



The steel surfaces are hot-dip galvanised inside and outside with lead-free zinc. The galvanisation has excellent corrosion resistance in outside environments and requires low maintenance.

Item no. MSC642400-3717P

Installation Information

| | |
|--------------------------|--------------------------|
| Max. fall height | 120 cm |
| Safety surfacing area | 36.3 m² |
| Total installation time | 24.5 |
| Excavation volume | 0.87 m³ |
| Concrete volume | 0.00 m³ |
| Footing depth (standard) | 90 cm |
| Shipment weight | 726 kg |
| Anchoring options | In-ground ✓ Surface ✓ |

Warranty Information

| | |
|-----------------------|----------|
| EcoCore HDPE | Lifetime |
| Galvanised Steel | Lifetime |
| HPL Decks | 15 years |
| Ropes & Nets | 10 years |
| Spare Parts Guarantee | 10 years |



Sustainability Data

MSC6424



| Cradle to Gate A1-A3 | Total CO ₂ emission | CO ₂ e/kg | Recycled materials |
|----------------------|--------------------------------|-------------------------|--------------------|
| | kg CO ₂ e | kg CO ₂ e/kg | % |
| MSC642400-3717P | 1,317.30 | 2.25 | 52.00 |

The overall framework applied for these factors is the Environmental Product Declaration (EPD), which quantifies "environmental information on the life cycle of a product and enable comparisons between products fulfilling the same function" (ISO, 2006). This follows the structure and applies a Life-Cycle Assessment approach to the entire Product stage from raw material through manufacturing (A1-A3))

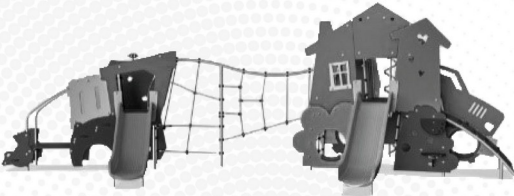
Kompan A/S
C.F. Tietgens Boulevard 32C
DK-5220 Odense SØ
Denmark

Validation of CO₂ calculation method

BUREAU VERITAS
HSE Denmark A/S



Verification of CO₂ calculation of: Themed play systems



Data version no. 2023-10-05

The CO₂ calculation and data are in compliance with the principles of a carbon footprint impact according to the GHG protocol (Greenhouse Gas Protocol), Scope 3, cradle to gate related to all individual components in the product category: "Themed play systems" represented by item no.: MSC641100-3717P.

(Scope 3 emissions include emission sources in the upstream and downstream value chain).

Date: 30. October 2023 | **Valid until:** 30. October 2025
Verified by:

Julie Marie Vejsgaard Larsen, LCA & EPD Consultant

Verification based on report: Validation of CO₂ calculation of 9 categories of Kompan product line, version 1.0, prepared by: Bureau Veritas HSE, Denmark: Julie M. V. Larsen.

Publication date: 30. October 2023

By Bureau Veritas HSE
www.bureauveritas.dk
+45 7731 1000

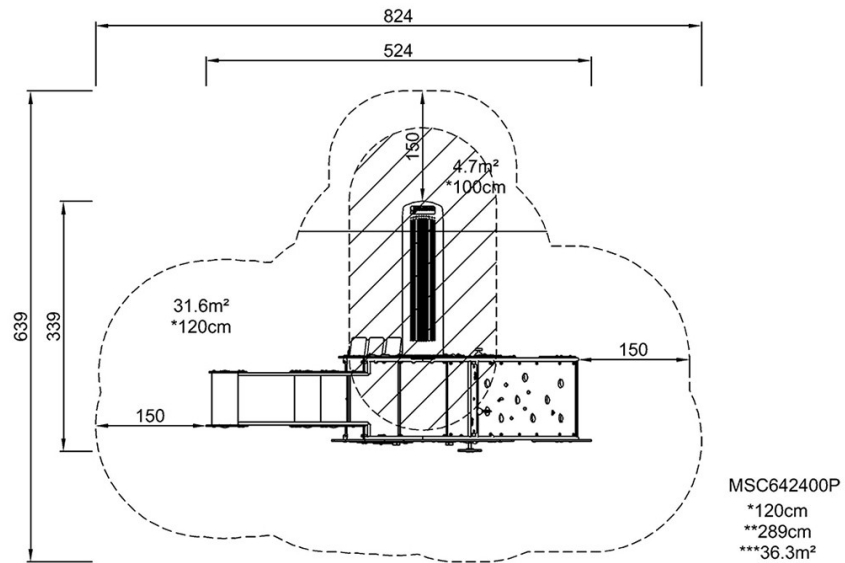

BUREAU VERITAS

Shop & Construction, ADA

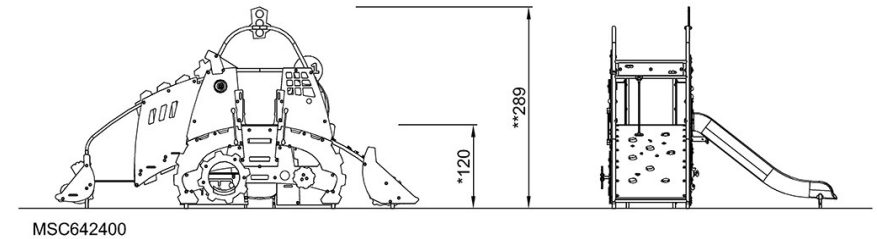
MSC6424

* Max fall height | ** Total height | *** Safety surfacing area

* Max fall height | ** Total height



[Click to see TOP VIEW](#)



[Click to see SIDE VIEW](#)