

Play Timer esterno

PCM201

KOMPAN
Let's play



Codice articolo PCM201-0901

Informazioni generali prodotto

Dimensioni (LxLxA)	44x23x127 cm
Età d'uso	5+
Capacità di gioco	4
Opzioni colori	●



Il Play Timer attira immensamente i bambini di tutte le età grazie ai suoni del count-down e ai pulsanti del timer. Il solo fatto di poter misurare i propri sforzi e confrontarli con quelli degli amici è un elemento ricreativo che spinge i bambini a usare il Play Timer più volte e a tornare per averne ancora. Nello sviluppo del Play Timer, KOMPAN si è basata su una

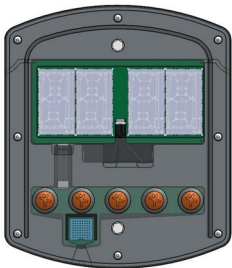
ricerca del KOMPAN Play Institute sul gioco emozionante, secondo la quale la corsa contro il tempo era un fattore di grande emozione per i bambini più grandi. Oltre a registrare in modo gioioso e giocoso la distanza percorsa e chi arriva prima, il Play Timer funziona anche come un pratico assistente per i turni, cronometrando durate di 10 o 30 secondi, ma anche di 2 o 5

minuti. Si tratta di un modo divertente e, per gli insegnanti, poco impegnativo per far sì che i bambini facciano i turni senza conflitti. Il Play Timer aumenta l'intensità del gioco, incrementa la cooperazione e aiuta i bambini a prestare attenzione l'uno all'altro.

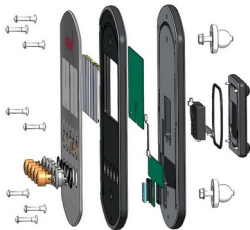


Play Timer esterno

PCM201



The reflective LCD display has four digits of 100mm height, with excellent outdoor visibility and a wide viewing angle. An LCD display has a low energy consumption, It is powered by 8 replaceable AA batteries with a lifespan of more than 2 years.



Front panels are made of UV-stabilized Polycarbonate. The UV-stabilization prevents the Transparent panels in being yellow over time and ensures the mechanical performances. The graphic prints are added by a unique multi-layer print process where the inner layer is the image and outer transparent layer functions as protection. The lacquer is water-based, and UV stabilized to prevent fading.



The push buttons and the housing for the push buttons are made from Polyamide (PA6). The buttons contain a magnet which activates a contactless reed switch when the buttons are pushed. This ensures high durability of the system.



The connectors are made of die-cast aluminum specially alloyed for outdoor environments and with a lead content below 100ppm. The connectors are attached to the posts by stainless steel screws and well protected against corrosion by special designed zinc washers. Extremely strong and no change of corrosion.

The loudspeaker is a piezoelectric speaker with a sound level of 90dB, and low power consumption. As power source we use eight standard AA 1,5V replaceable batteries with a capacity of 2.95Ah. The expected lifetime of the batteries is two years, depending on usage. It is recommended to inspect the batteries yearly. The batteries are placed in two sealed battery boxes with a protection class of IP65.



Steel posts are made of Ø101,6 x 2,0mm pre-galvanized steel tube. The posts are powder coated. Tops of posts are sealed with plastic caps (PA6). Footings for surface installation are manufactured from Carbon steel with hot-dip galvanized surface according to ISO1461.

Codice articolo PCM201-0901	
Informazione installazione	
Max. altezza di caduta	0 cm
Superficie di sicurezza	9,6 m²
Tempo d'installazione totale	2,4
Volume di scavo	0,03 m³
Volume di calcestruzzo	0,01 m³
Profondità di base (standard)	85 cm
Peso della spedizione	35 kg
Opzioni ancoraggio	Interrato ✓ Superficie ✓
Garanzie	
pannelli in polycarbonato PC	10 anni
Pali (verniciatura)	10 anni
Garanzia pezzi di ricambio	10 anni



Sustainability Data

PCM201



Cradle to Gate A1-A3	Total CO ₂ emission	CO ₂ e/kg	Recycled materials
	kg CO ₂ e	kg CO ₂ e/kg	%
PCM201-0901	79,40	3,47	51,10

The overall framework applied for these factors is the Environmental Product Declaration (EPD), which quantifies "environmental information on the life cycle of a product and enable comparisons between products fulfilling the same function" (ISO, 2006). This follows the structure and applies a Life-Cycle Assessment approach to the entire Product stage from raw material through manufacturing (A1-A3))

Kompan A/S
C.F. Tietgens Boulevard 32C
DK-5220 Odense SØ
Denmark



Verification of CO₂ calculation of: Park



Data version no. 2023-10-05

The CO₂ calculation and data are in compliance with the principles of a carbon footprint impact according to the GHG protocol (Greenhouse Gas Protocol), Scope 3, cradle to gate related to all individual components in the product category: "Park" represented by item no.: PAR4070-0001.

(Scope 3 emissions include emission sources in the upstream and downstream value chain).

Date: 30. October 2023 | Valid until: 30. October 2025
Verified by:

Julie Marie Vejsgaard Larsen, LCA & EPD Consultant

Verification based on report: Validation of CO₂ calculation of 9 categories of Kompan product line, version 1.0, prepared by: Bureau Veritas HSE, Denmark: Julie M. V. Larsen.

Publication date: 30. October 2023

By Bureau Veritas HSE
www.bureauveritas.dk
+45 7731 1000

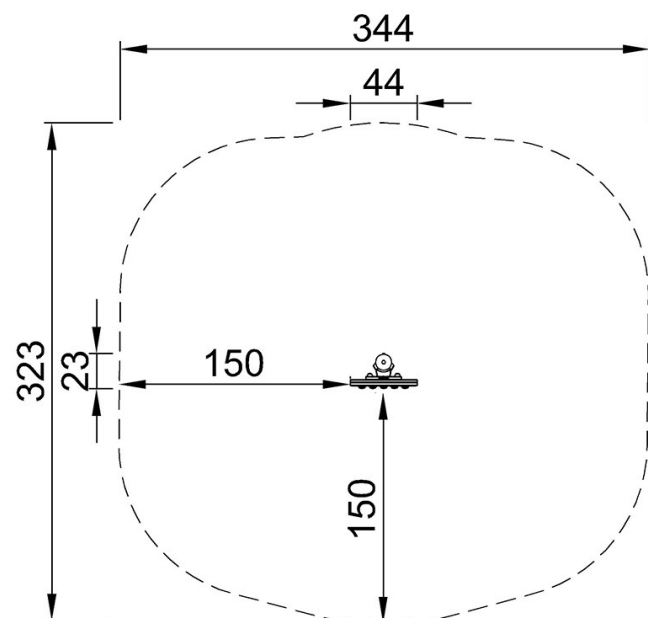


Play Timer esterno

PCM201

Altezza di caduta massima | Altezza totale | Superficie di sicurezza

Altezza di caduta massima | Altezza totale



PCM201
**127cm
***9.6m²



PCM201

[Fai clic per visualizzare il rapporto VISTA SUPERIORE](#)

[Fai clic per visualizzare il rapporto VISTA LATERALE](#)