

Giant XL



PCT111231



WOW! The Giant XL's sky-high climb-slide-meet features are wildly attractive to children. The unique variety of speedy slides and glides, gentle sways and stays, and not least, wild climbs attract vigorous play over and over. The see through towers are meandering inside, developing children's muscles and coordination with steep steps and open ropes. The open

and closed slide and the challenging banister bars offer fast rides, severe fun, and stimulating social-emotional skills, such as self-regulation and empathy. The varied climbing activities offer options for all, while the transparent climbs add thrill. Climbing here trains cross-coordination, sense of space, and muscles. Low climbing walls create an inviting frame for

play shells, talking tube, hammock and tic-tac-toe on ground level. This space allows for all to socialize and participate in play.

Item no. PCT111231-0902	
General Product Information	
Dimensions LxWxH	32'5"x37'2"x29'3"
Age group	5 - 12
Play capacity (users)	60
Color options	 



Giant XL

PCT111231



Fireman's pole

Physical: coordination is supported when going down, as well as arm and core muscles. Landing strengthens bone density, which is built for life in early childhood. **Social-Emotional:** turn-taking and risk-taking.



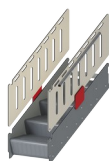
Banister bars

Physical: coordination is supported when going down, as well as arm and core muscles. Landing strengthens bone density, which is built for life in childhood. **Social-Emotional:** turn-taking and risk-taking.



High spiral tube slide

Physical: sliding supports spatial awareness and a sense of balance. Furthermore, the core muscles are trained when sitting upright going down. **Social-Emotional:** thrill when going down fast. Empathy stimulated by turn-taking. Feeling of security when stopping on extra long slide mouth.



Accessible stairway

Physical: climbing the accessible stairway is for all and supports cross coordination as well as arm and leg muscles. For young children, walking stairs and alternating feet is developed. **Social-Emotional:** room for active breaks and adult helpers. An inclusive space.



Tic-tac-toe panel

Social-Emotional: stimulates communication and turn-taking skills. **Cognitive:** support rules understanding, strategic thinking. **Creative:** leaving marks when tumblers are left in new positions.



Play shell

Physical: the swaying movement stimulates the sense of balance, necessary to sit still on a chair. **Social-Emotional:** meeting, taking a break and turn-taking are supported, skills necessary to learn how to avoid conflicts.



Internal transparent climbing panel

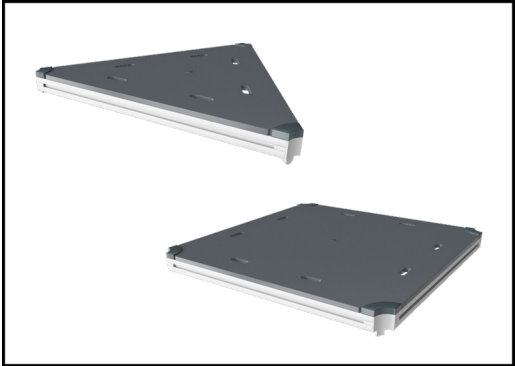
Physical: supports cross coordination, which supports cross-modal perception, necessary for other skills such as reading. Further trains leg, arm and hand strength. **Social-Emotional:** the see-through panel makes it possible to watch and contact friends at ground level while up high. **Cognitive:** the see-through effect adds a feeling of thrill when used up high.

Giant XL

PCT111231



Panels of 19mm EcoCore™. EcoCore™ is a highly durable, eco friendly material, which is not only recyclable after use, but also consists of a core produced from 100% recycled material.



All decks are supported by uniquely designed low-carbon aluminum profiles with multiple attachment options. The grey-colored molded decks are made of 75% post-consumer ocean waste PP material with a non-skid pattern and texture surface.



The main posts have an alloy with improved tensile and yield strength to ensure superior structural integrity of the high towers. The posts have hot dip galvanized base and powder coated top finish which ensure long lifetime.

Item no. PCT111231-0902	
Installation Information	
Max. fall height	9'2"
Safety surfacing area	1406ft²
Total installation time	229.6
Excavation volume	17.12yd³
Concrete volume	7.43yd³
Footing depth (standard)	2'11"
Shipment weight	8907lbs
Anchoring options	In-ground ✓
Warranty Information	
EcoCore HDPE	Lifetime
PP Decks	10 Years
Ropes & nets	10 Years
Spare Parts Availability	10 Years
Steel post HDG	Lifetime



High-quality polycarbonate with a thickness of 15mm. The graphic prints are added by a unique multi-layer print process where the inner layer is the image and outer transparent layer functions as protection. Both PC panel and the water-based lacquer are UV stabilized to prevent fading.



Fully welded steel frame with 45° cross welded steel grid of round steel pins with a diameter of 4mm. The airflow panel contributes to the overall structural integrity of the GIANT towers.



Curved and straight tunnel slide of either PE or stainless-steel material and supported by multiple steel rods to a center steel post. The tunnel slides are designed with perfect curve and inclination for a playful ride.

Elevated activities 14	Accessible elevated activities	Accessible ground level activities	Accessible ground level play types
Present	9	5	3
Required	7	5	3

**ASTM
F1487**
compliant

Sustainability Data

PCT111231



Cradle to Gate A1-A3	Total CO ₂ emission	CO ₂ e/kg	Recycled materials
	kg CO ₂ e	kg CO ₂ e/kg	%
PCT111231-0902	8,752.30	2.63	51.40

The overall framework applied for these factors is the Environmental Product Declaration (EPD), which quantifies "environmental information on the life cycle of a product and enable comparisons between products fulfilling the same function" (ISO, 2006). This follows the structure and applies a Life-Cycle Assessment approach to the entire Product stage from raw material through manufacturing (A1-A3))

Verification of CO₂ calculation of: Play systems



Data version no. 2023-10-05

The CO₂ calculation and data are in compliance with the principles of a carbon footprint impact according to the GHG protocol (Greenhouse Gas Protocol), Scope 3, cradle to gate related to all individual components in the product category: "Play systems" represented by item no.: PCM200321-0950.

(Scope 3 emissions include emission sources in the upstream and downstream value chain).

Date: 30. October 2023 | Valid until: 30. October 2025

Verified by:

Julie Marie Vejsgaard Larsen, LCA & EPD Consultant

Verification based on report: Validation of CO₂ calculation of 9 categories of Kompan product line, version 1.0, prepared by: Bureau Veritas HSE, Denmark: Julie M. V. Larsen.

Publication date: 30. October 2023



By Bureau Veritas HSE
www.bureauveritas.dk
+45 7731 1000



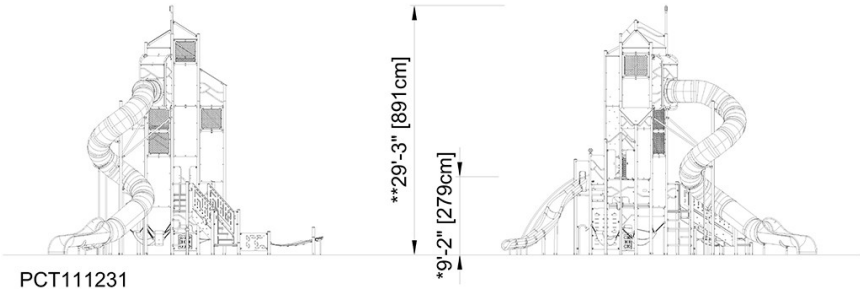
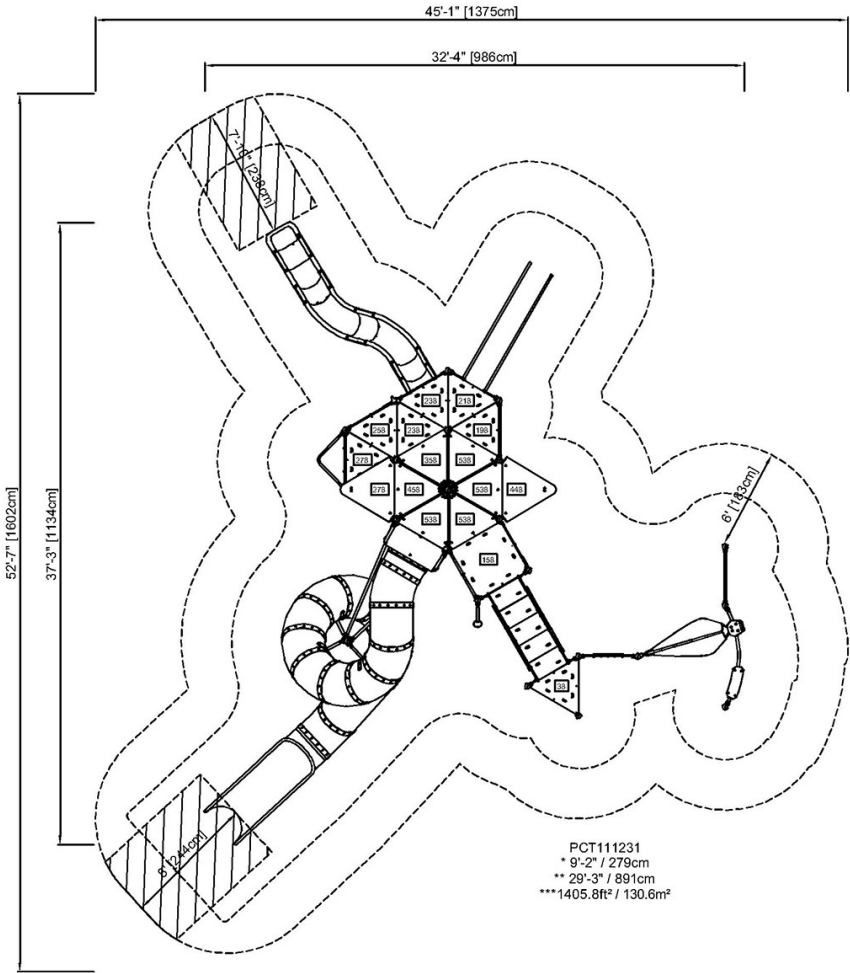
Giant XL

PCT111231



* Max fall height | ** Total height | *** Safety surfacing area

* Max fall height | ** Total height



[Click to see TOP VIEW](#)

[Click to see SIDE VIEW](#)