

Cableway Start Platform

PCM114431



Large elevated square start platform with capacity for many waiting users. The long run-up ramp ensures easy access to the start area when returning the seat to the following user. The platform is designed to be used for cableways installed in flat surroundings.

Item no. PCM114431-0901	
General Product Information	
Dimensions LxWxH	3'11"x10'4"x6'7"
Age group	5 - 12
Play capacity (users)	
Color options	●



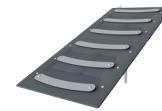
Cableway Start Platform

PCM114431



Platform

Social-Emotional: Important life skills like courage, self-confidence, consideration and turn-taking are built.



Slope

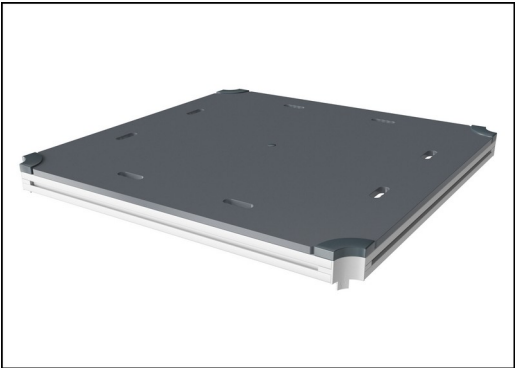
Physical: inclined crawling or walking up or down develops the sense of balance and cross coordination. **Social-Emotional:** the incline makes climbing feel safer, especially for younger children.

Cableway Start Platform

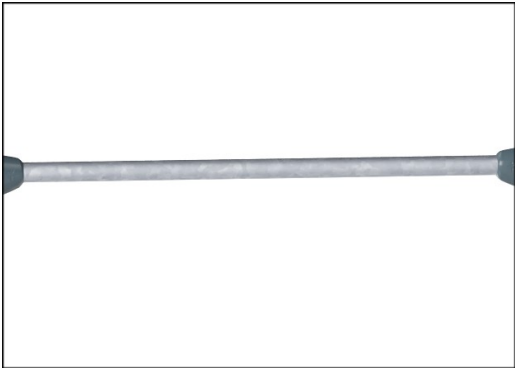
PCM114431



Main posts with hot-dip galvanized steel footing are available in different materials: Pressure impregnated pinewood posts. Pre-galvanized inside and outside with powder-coated top finish steel posts. Lead-free aluminum with color anodized top finish. Greenline TexMade posts of 100% post-consumer recycled PE and textile waste.



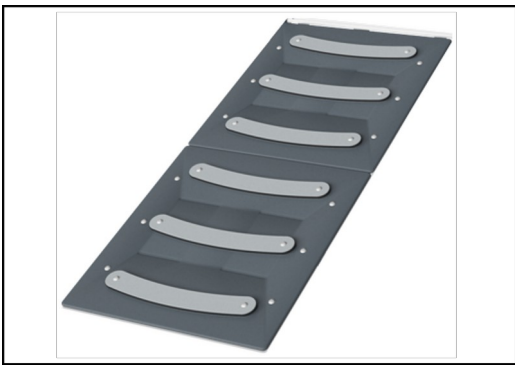
All decks are supported by uniquely designed low-carbon aluminum profiles with multiple attachment options. The grey-colored molded decks are made of 75% post-consumer ocean waste PP material with a non-skid pattern and texture surface.



The steel surfaces are hot-dip galvanized inside and outside with lead-free zinc. The galvanization has excellent corrosion resistance in outside environments and requires minimal maintenance.



Panels of 19mm EcoCore™. EcoCore™ is a highly durable, eco friendly material, which is not only recyclable after use, but also consists of a core produced from 100% recycled material.



The ramp deck is made of High-Pressure Laminate HPL with a thickness of 17.8mm and non-skid surface texture according to EN 438-6. KOMPAN HPL has high wearing strength to ensure a long lifetime in all climates.

Item no. PCM114431-0901	
Installation Information	
Max. fall height	2'11"
Safety surfacing area	318ft²
Total installation time	7.6
Excavation volume	0.37yd³
Concrete volume	0yd³
Footing depth (standard)	2'9"
Shipment weight	522lbs
Anchoring options	Surface ✓ In-ground ✓
Warranty Information	
EcoCore HDPE	Lifetime
Hot dip galvanized steel	Lifetime
Post	10 Years
PP Decks	10 Years
Spare Parts Availability	10 Years

Elevated activities	Accessible elevated activities	Accessible ground level activities	Accessible ground level play types
Present			
Required			

**ASTM
F1487**
compliant

Sustainability Data

PCM114431



Cradle to Gate A1-A3	Total CO ₂ emission	CO ₂ e/kg	Recycled materials
	kg CO ₂ e	kg CO ₂ e/kg	%
PCM114431-0901	463.50	2.57	40.30

The overall framework applied for these factors is the Environmental Product Declaration (EPD), which quantifies "environmental information on the life cycle of a product and enable comparisons between products fulfilling the same function" (ISO, 2006). This follows the structure and applies a Life-Cycle Assessment approach to the entire Product stage from raw material through manufacturing (A1-A3))

Kompan A/S
C.F. Tietgens Boulevard 32C
DK-5220 Odense SØ
Denmark



Verification of CO₂ calculation of: Freestanding play equipment



Data version no. 2023-10-05

The CO₂ calculation and data are in compliance with the principles of a carbon footprint impact according to the GHG protocol (Greenhouse Gas Protocol), Scope 3, cradle to gate related to all individual components in the product category: "Freestanding play equipment" represented by item no.: KSW92011-0910.

(Scope 3 emissions include emission sources in the upstream and downstream value chain).

Date: 30. October 2023 | Valid until: 30. October 2025
Verified by:

Julie Marie Vejsgaard Larsen, LCA & EPD Consultant

Verification based on report: Validation of CO₂ calculation of 9 categories of Kompan product line, version 1.0, prepared by: Bureau Veritas HSE, Denmark: Julie M. V. Larsen.

Publication date: 30. October 2023

By Bureau Veritas HSE
www.bureauveritas.dk
+45 7731 1000

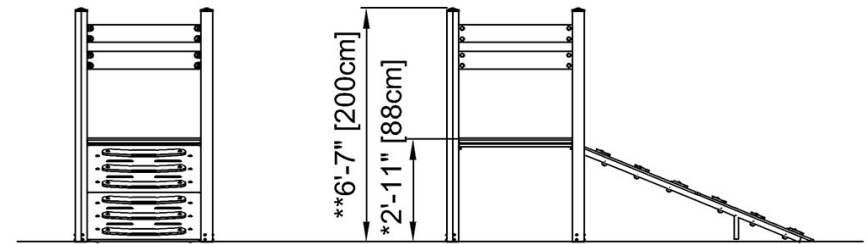
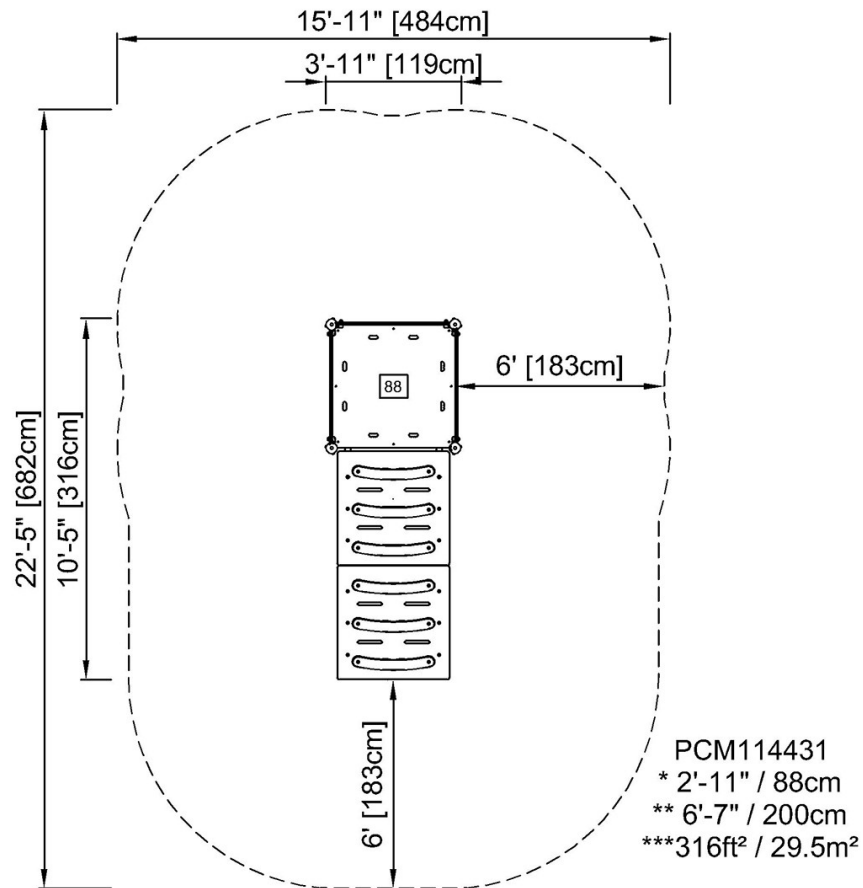


Cableway Start Platform

PCM114431

* Max fall height | ** Total height | *** Safety surfacing area

* Max fall height | ** Total height



PCM114431

[Click to see TOP VIEW](#)

[Click to see SIDE VIEW](#)