


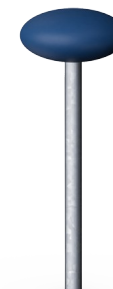
Salto della cavallina

FRE3044



Questa cavallina con sedili superiori arrotondati offre un modo divertente per sedersi e guardare le partite in un campo multisport ma può anche stare da sola o in combinazione con altri prodotti dedicati all'agility per esercizi di training all'aperto.

Codice articolo FRE3044-3517	
Informazioni generali prodotto	
Dimensioni (LxLxA)	30x30x80 cm
Età d'uso	3+
Capacità di gioco	-
Opzioni colori	



Salto della cavallina

FRE3044



The top seat is 15 cm high and has a diameter of 30. cm. The top seat is made of PE and has a fine structure which makes it comfortable for the hands.



The tube of the Grasshopper is made of a Ø48,3 x 2,9mm, hot dip galvanized steel tube. The top seat is connected with a M12 bolt and covered by a PE top cap.

Codice articolo FRE3044-3517

Informazione installazione

Max. altezza di caduta	80 cm
Superficie di sicurezza	8,6 m²
Tempo d'installazione totale	0,3
Volume di scavo	0,20 m³
Volume di calcestruzzo	0,00 m³
Profondità di base (standard)	80 cm
Peso della spedizione	14 kg
Opzioni ancoraggio	Interrato ✓

Garanzie

Pali in acciaio HDG	Garanzia a vita
Parti vuote in polietilene (PE)	10 anni
Garanzia pezzi di ricambio	10 anni



Sustainability Data

FRE3044



Cradle to Gate A1-A3	Total CO ₂ emission	CO ₂ e/kg	Recycled materials
	kg CO ₂ e	kg CO ₂ e/kg	%
FRE3044-3517	26,60	2,52	48,40

The overall framework applied for these factors is the Environmental Product Declaration (EPD), which quantifies "environmental information on the life cycle of a product and enable comparisons between products fulfilling the same function" (ISO, 2006). This follows the structure and applies a Life-Cycle Assessment approach to the entire Product stage from raw material through manufacturing (A1-A3))

Kompan A/S
C.F. Tietgens Boulevard 32C
DK-5220 Odense SØ
Denmark



Verification of CO₂ calculation of: Sport



Data version no. 2023-10-05

The CO₂ calculation and data are in compliance with the principles of a carbon footprint impact according to the GHG protocol (Greenhouse Gas Protocol), Scope 3, cradle to gate related to all individual components in the product category: "Sport" represented by item no.: FRE600202-0901.

(Scope 3 emissions include emission sources in the upstream and downstream value chain).

Date: 30. October 2023 | Valid until: 30. October 2025
Verified by:

Julie Marie Vejsgaard Larsen, LCA & EPD Consultant

Verification based on report: Validation of CO₂ calculation of 9 categories of Kompan product line, version 1.0, prepared by: Bureau Veritas HSE, Denmark: Julie M. V. Larsen.

Publication date: 30. October 2023

By Bureau Veritas HSE
www.bureauveritas.dk
+45 7731 1000

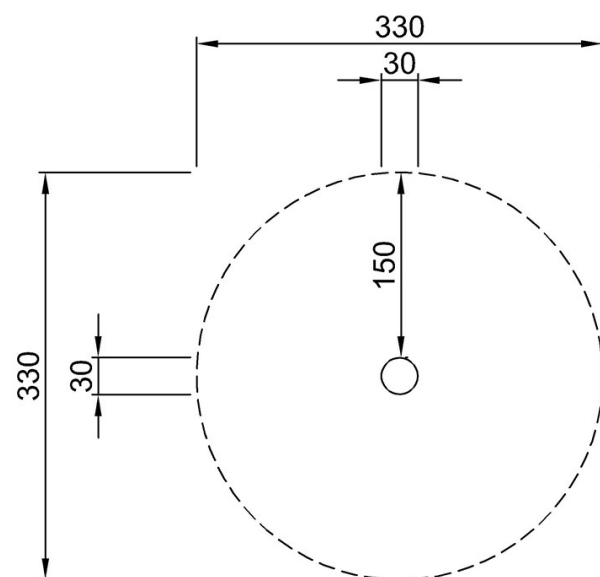


Salto della cavallina

FRE3044

Altezza di caduta massima | Altezza totale | Superficie di sicurezza

Altezza di caduta massima | Altezza totale

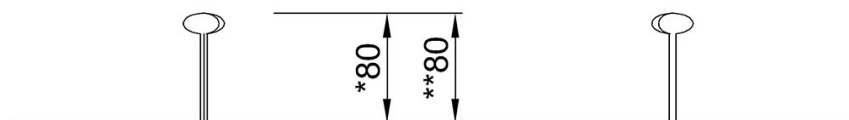


FRE3044-Single

*80cm

**80cm

***8.6m²



FRE3044

[Fai clic per visualizzare il rapporto VISTA SUPERIORE](#)

[Fai clic per visualizzare il rapporto VISTA LATERALE](#)