

# Music Play Panel 2

NRO613



Item no. NRO613-1001	
General Product Information	
Dimensions LxWxH	6'10"x3'2"x2'9"
Age group	6m - 5
Play capacity (users)	6
Color options	



The Music Play Panel 2 attracts children immensely with its colorful combinations of rhythm, sounds, and tones. Children will return again and again to be part of creative play on their own or with friends and teachers. The music pipes offer sensory variations with a tonal sound outcome. Children develop the hand-eye coordination that is crucial to control

of movement and fine motor skills like handwriting. The black rubber flaps can be plunked, or pipes beat and tunes created. This trains logical as well as creative thinking and invites cooperation and social play. The Percussion Panel is an immense play invitation for children. The drums can be played alone or together. There is room for many users to

congregate around them. This encourages social interaction and co-creation when drumming rhythms and singing along. It also stimulates cognition and creativity as children create rules and rhythms together or individually.



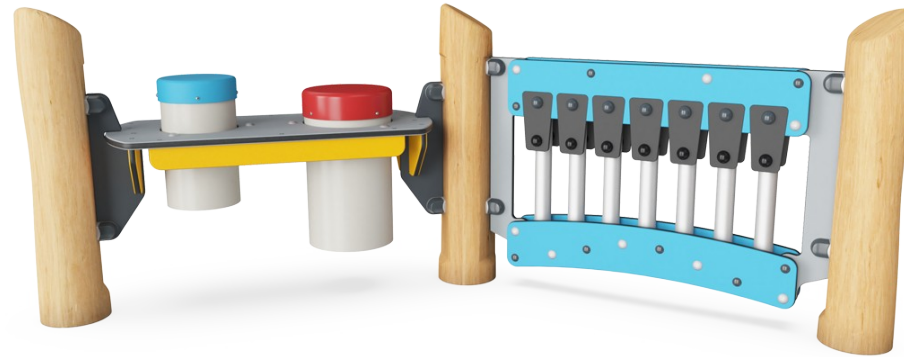
# Music Play Panel 2

NRO613



## Music tubes

**Social-Emotional:** invite social interaction and co-creation for more children, on both sides. **Cognitive:** understanding of cause and effect when striking tubes. **Creative:** the creation of different intensity and tonality stimulates creative skills.



## Two sides

**Social-Emotional:** invites cooperation and communication. The low height and the transparency of the panel makes interaction possible between the two sides.



## Rubber flaps

**Social-Emotional:** the two rows of flaps invite cooperation and co-creation. **Cognitive:** cause and effect understanding when discovering sound from flaps hitting tubes.



## Tonality

**Cognitive:** creative thinking when combining tones into tunes. **Creative:** composing new tonal combinations stimulates creativity.



## Drums

**Social-Emotional:** cooperation and co-creation, parallel and group play. **Cognitive:** cause and effect understanding when creating sounds, supporting a sense of rhythm that is essential for pre-reading skills. **Creative:** creating and leaving a mark with sound.

# Music Play Panel 2

NRO613



All Organic Robinia products by KOMPAN are made of Robinia wood from sustainable European sources. On request it can be supplied as FSC® Certified (FSC® C004450).



The Robinia wood can be supplied as untreated raw wood or painted with a brown colored transparent pigment that maintains the golden wood color of the wood.



There are Multiple footing options for all products: Surface anchoring with steel footings and expansion bolts. Wood in-ground or steel in-ground footings.

Item no. NRO613-1001	
Installation Information	
Max. fall height	0'0"
Safety surfacing area	0ft²
Total installation time	4.8
Excavation volume	0.5yd³
Concrete volume	0yd³
Footing depth (standard)	3'3"
Shipment weight	338lbs
Anchoring options	In-ground ✓ Surface ✓
Warranty Information	
EcoCore HDPE	Lifetime
Hot dip galvanized steel	Lifetime
Movable parts	2 Years
Robinia Wood	10 Years
Spare Parts Availability	10 Years



Panels of 19mm EcoCore™. EcoCore™ is a highly durable, eco friendly material, which is not only recyclable after use, but also consists of a core produced from 100% recycled material.



The Xylophone music panel consist of HDPE material in 19mm EcoCore™ made with +95% recycled post-consumer material from e.g., food packing waste in both core and colorful outer layer. The pipes are made of die cast aluminum specifically alloyed for outdoor environments. The percussion panel consist of 2 Conga Drums with PP tubes and top in colored ABS.



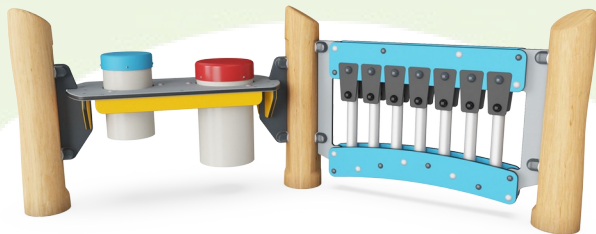
Membranes consist of friction-proof rubberized material of conveyor belt quality with excellent UV resistance. Embedded is a four-layered armoring made of woven polyester. The armoring and the two surface layers result in a total thickness of 9 mm.

Elevated activities 0	Accessible elevated activities	Accessible ground level activities	Accessible ground level play types
Present	0	2	1
Required	0	2	1

**ASTM  
F1487**  
compliant

# Sustainability Data

NRO613



Cradle to Gate A1-A3	Total CO <sub>2</sub> emission	CO <sub>2</sub> e/kg	Recycled materials
	kg CO <sub>2</sub> e	kg CO <sub>2</sub> e/kg	%
NRO613-1001	90.00	0.72	15.60

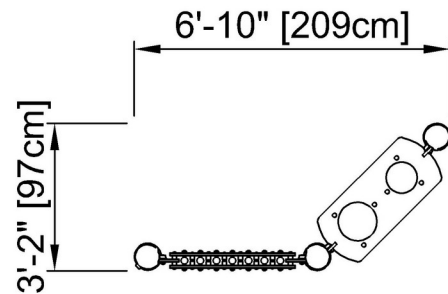
The overall framework applied for these factors is the Environmental Product Declaration (EPD), which quantifies "environmental information on the life cycle of a product and enable comparisons between products fulfilling the same function" (ISO, 2006). This follows the structure and applies a Life-Cycle Assessment approach to the entire Product stage from raw material through manufacturing (A1-A3))

# Music Play Panel 2

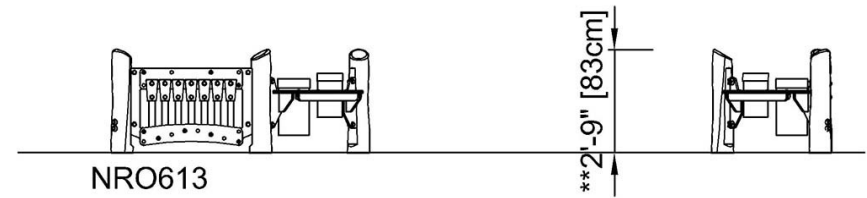
NRO613

\* Max fall height | \*\* Total height | \*\*\* Safety surfacing area

\* Max fall height | \*\* Total height



NRO613  
\*\* 2'-9" / 83cm



[Click to see TOP VIEW](#)

[Click to see SIDE VIEW](#)