

Castle Watch Tower

PCM112731

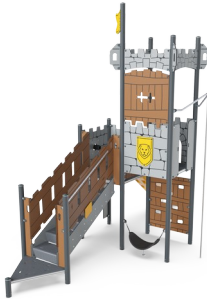
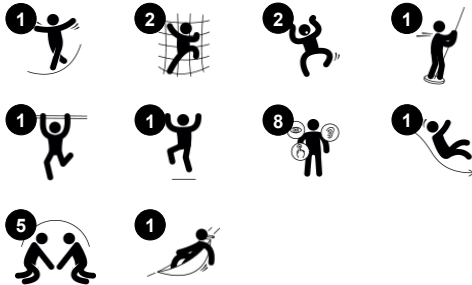


A lot of play in little space: the Castle Watch Tower will inspire young children to play actively again and again. The stairs offer a quick point of entry. The climber access provides an age-appropriate challenge to strengthen muscles and help develop cross-coordination skills. This enhances children's abilities to use both sides of their brain and

supports the internal structures that enable reading and thinking. On the platform, a balcony offers a view of the playground. The slide and fireman's pole offer thrilling exits. The higher fireman's pole is for daredevils, training the sense of space when holding tight and going down quickly. Sliding supports posture and balance, the foundation for all other

physical skills. Under the platform is a swaying hammock that invites to a soothing break. A slime door enforces the castle cellar feeling and invites dramatic play. This stimulates language development. In young children, the door is an obstacle that stimulates the understanding of object permanence and spurs hiding games.

Item no. PCM112731-0901	
General Product Information	
Dimensions LxWxH	9'4"x20'6"x16'5"
Age group	5 - 12
Play capacity (users)	17
Color options	



Castle Watch Tower

PCM112731



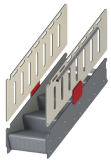
Cannon

Cognitive: the cannon sets a tangible theme and spurs dramatic play. Dramatic play supports language and communication skills.



Fireman's pole

Physical: coordination is supported when going down, as well as arm and core muscles. Landing strengthens bone density, which is built for life in early childhood. **Social-Emotional:** turn-taking and risk-taking.



Accessible stairway

Physical: climbing the accessible stairway is for all and supports cross coordination as well as arm and leg muscles. For young children, walking stairs and alternating feet is developed. **Social-Emotional:** room for active breaks and adult helpers. An inclusive space.



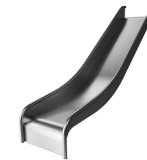
Slime door

Physical: tactile stimulation from moving the body through rubber slime door. **Social-Emotional:** stimulates turn-taking.



Hammock

Physical: coordination and sense of balance when swaying. **Social-Emotional:** meeting, pushing friends gently back and forth, turn-taking. **Cognitive:** for toddlers cause and effect understanding.



Slide

Physical: sliding develops spatial awareness and a sense of balance. Furthermore, the core muscles are trained when sitting upright going down. **Social-Emotional:** empathy stimulated by turn-taking.



Climbing wall

Physical: develops children's cross coordination, eye-hand coordination, and muscle strength when climbing. **Social-Emotional:** two-sided climb invites cooperation.

Castle Watch Tower

PCM112731



Panels of 19mm EcoCore™. EcoCore™ is a highly durable, eco friendly material, which is not only recyclable after use, but also consists of a core produced from 100% recycled material.



Main posts with hot dip galvanized steel footing are available in different materials: Pressure impregnated pine wood posts. Pre-galvanized inside and outside with powder coated top finish steel posts. Lead free aluminium with color anodized top finish.



All decks are supported by uniquely designed low-carbon aluminum profiles with multiple attachment options. The grey-colored molded decks are made of 75% post-consumer ocean waste PP material with a non-skid pattern and texture surface.

Item no. PCM112731-0901	
Installation Information	
Max. fall height	7'9"
Safety surfacing area	491ft²
Total installation time	22.5
Excavation volume	1.24yd³
Concrete volume	0.44yd³
Footing depth (standard)	2'11"
Shipment weight	1728lbs
Anchoring options	In-ground ✓ Surface ✓
Warranty Information	
EcoCore HDPE	Lifetime
Post	10 Years
PP Decks	10 Years
Ropes & nets	10 Years
Spare Parts Availability	10 Years



The slides can be chosen in different materials and colors: Straight or curved molded PE slides in yellow or grey color. Full stainless steel in on-piece design for more vandalism proof solutions.



The stainless-steel activities are made of high-quality stainless steel. The steel is cleaned by a total pickling process after manufacturing to ensure a smooth and clean gliding surfaces.



KOMPAN Play Systems can be customized to match individual demands. Visit the products www.KOMPAN.us to see options with the digital KOMPAN Solution Planner. Multiple options for panels, decks, posts, slides, and other play activities ensure durable solutions in any outdoor environment.

Elevated activities 4	Accessible elevated activities	Accessible ground level activities	Accessible ground level play types
Present	2	2	2
Required	2	1	1

**ASTM
F1487**
compliant

Sustainability Data

PCM112731



Cradle to Gate A1-A3	Total CO ₂ emission	CO ₂ e/kg	Recycled materials
	kg CO ₂ e	kg CO ₂ e/kg	%
PCM112731-0901	1,189.40	1.98	67.60

The overall framework applied for these factors is the Environmental Product Declaration (EPD), which quantifies "environmental information on the life cycle of a product and enable comparisons between products fulfilling the same function" (ISO, 2006). This follows the structure and applies a Life-Cycle Assessment approach to the entire Product stage from raw material through manufacturing (A1-A3))

Kompan A/S
C.F. Tietgens Boulevard 32C
DK-5220 Odense SØ
Denmark



Verification of CO₂ calculation of: Themed play systems



Data version no. 2023-10-05

The CO₂ calculation and data are in compliance with the principles of a carbon footprint impact according to the GHG protocol (Greenhouse Gas Protocol), Scope 3, cradle to gate related to all individual components in the product category: "Themed play systems" represented by item no.: MSC641100-3717P.

(Scope 3 emissions include emission sources in the upstream and downstream value chain).

Date: 30. October 2023 | Valid until: 30. October 2025
Verified by:

Julie Marie Vejsgaard Larsen, LCA & EPD Consultant

Verification based on report: Validation of CO₂ calculation of 9 categories of Kompan product line, version 1.0, prepared by: Bureau Veritas HSE, Denmark: Julie M. V. Larsen.

Publication date: 30. October 2023

By Bureau Veritas HSE
www.bureauveritas.dk
+45 7731 1000

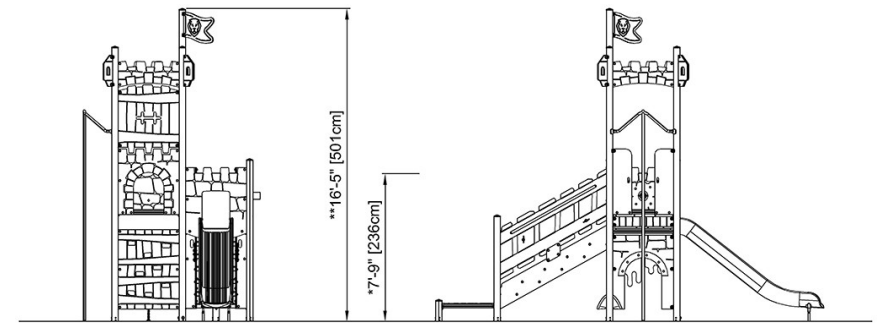
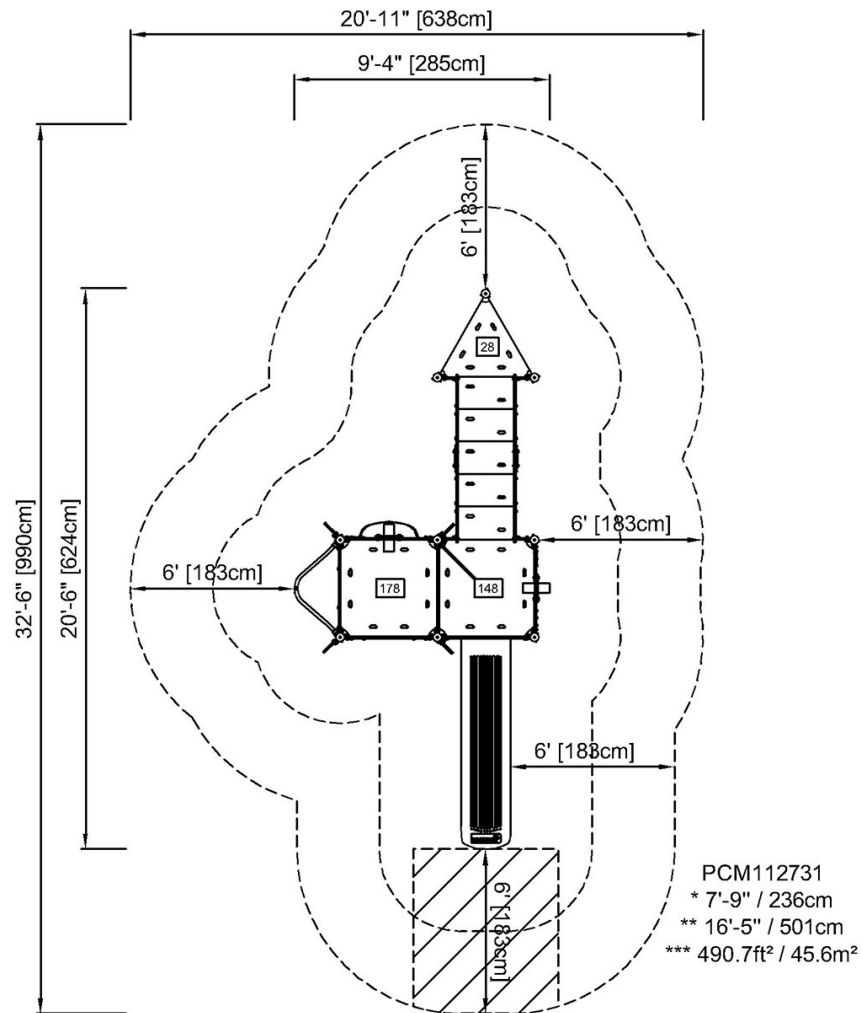


Castle Watch Tower

PCM112731

* Max fall height | ** Total height | *** Safety surfacing area

* Max fall height | ** Total height



PCM112731

[Click to see TOP VIEW](#)

[Click to see SIDE VIEW](#)