

Forest Giraffe

MSC5416



Item no. MSC541600-3417P

General Product Information

Dimensions LxWxH	181x115x136 cm
Age group	6m+
Play capacity (users)	11
Color options	



The Forest Giraffe is the friendliest animal on the savanna. It attract tots straight away. Thanks to the wide variety of activities, toddlers play for a long time and come back again and again. Thanks to the transparency in design and the wide platform, support of play is eased for carers. The climbing net assists cross-coordination and proprioception, both

fundamental motor skills in navigating the world securely. The nice den under the green platform has varied entry points to evoke the sense of wonder and logical thinking of space and measures in the child: Can I get through these openings? What shape are they? The rich tactile details are lovely to touch. They take toddlers on a journey of understanding e.g.

object permanence: pulling the tail back and forth shows that things can disappear but still exist.



Forest Giraffe

MSC5416



Tail

Social-Emotional: cooperation and turn-taking when pulling the tail. **Cognitive:** understanding of object permanence: things can disappear without being gone forever. **Creative:** leaving a mark by placing tail in your preferred position.



Climbing net

Physical: hand-eye coordination, cross coordination and proprioception are trained. These are fundamental for judging the body in time and space, crucial life skills for navigating the world securely.



Flaps

Cognitive: hand eye coordination, exploring that some flaps have holes behind them, while some don't. This supports sense of wonder.



Broad table platform

Physical: cross coordination and spatial awareness when crawling over and under. This trains secure navigation of space. **Social-Emotional:** space for meeting, resting and socializing. **Cognitive:** dark green horizontal panel and the sand colored vertical panels support the understanding of space.



Play spheres with toothed grooves

Social-Emotional: can be played from both sides, encouraging cooperation. **Cognitive:** cause and effect understanding. **Creative:** leave a mark and place the spheres at different positions.



Den

Physical: crawling through the possible openings trains spatial awareness. **Social-Emotional:** the enclosed space invites social play for two or three children. **Cognitive:** the differently shaped holes (triangle, circle, square, square with curtains) invites naming and exploring shapes, supporting the understanding of shapes, space and measures.



Crawl-through hole with curtains

Physical: the hole allows for climbing and crawling through, developing cross coordination, proprioception and spatial awareness. **Social-Emotional:** cooperation and turn-taking when playing with friends on the other side. **Cognitive:** understanding of object permanence: things can disappear without being gone forever – a thrilling insight.

Forest Giraffe

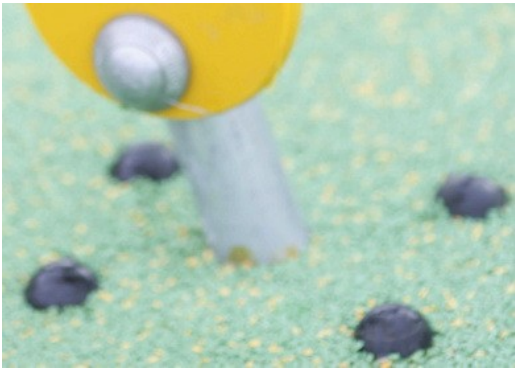
MSC5416



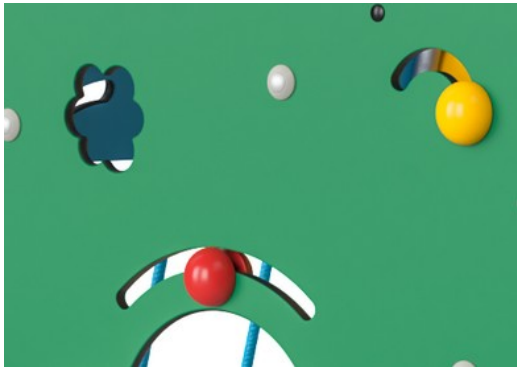
Panels of 19mm EcoCore™. EcoCore™ is a highly durable, eco friendly material, which is not only recyclable after use, but also consists of material produced from +95% recycled post consumer material from food packing waste.



Climbing nets are made of UV-stabilised PP rope with inner steel cable reinforcement. The rope is induction treated to obtain maximum fixation between steel and rope which provides excellent wear and tear resistance. All rope connectors are made of 100% recyclable PA material.



The steel surfaces are hot dip galvanised inside and outside with lead free zinc. The galvanisation has excellent corrosion resistance in outside environments and requires low maintenance.



Play activities like the play sphere are made of injection moulded high quality UV-stabilised nylon (PA6). Nylon has good wearing and impact strength.

Item no. MSC541600-3417P	
Installation Information	
Max. fall height	56 cm
Safety surfacing area	17.2 m²
Total installation time	7.6
Excavation volume	0.22 m³
Concrete volume	0.00 m³
Footing depth (standard)	60 cm
Shipment weight	143 kg
Anchoring options	In-ground ✓ Surface ✓



Sustainability Data

MSC5416



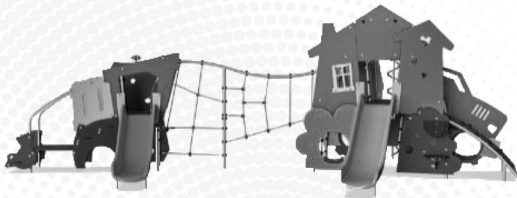
Cradle to Gate A1-A3	Total CO ₂ emission	CO ₂ e/kg	Recycled materials
	kg CO ₂ e	kg CO ₂ e/kg	%
MSC541600-3417P	140.70	1.56	78.80

The overall framework applied for these factors is the Environmental Product Declaration (EPD), which quantifies "environmental information on the life cycle of a product and enable comparisons between products fulfilling the same function" (ISO, 2006). This follows the structure and applies a Life-Cycle Assessment approach to the entire Product stage from raw material through manufacturing (A1-A3))

Kompan A/S
C.F. Tietgens Boulevard 32C
DK-5220 Odense SØ
Denmark



Verification of CO₂ calculation of: Themed play systems



Data version no. 2023-10-05

The CO₂ calculation and data are in compliance with the principles of a carbon footprint impact according to the GHG protocol (Greenhouse Gas Protocol), Scope 3, cradle to gate related to all individual components in the product category: "Themed play systems" represented by item no.: MSC641100-3717P.

(Scope 3 emissions include emission sources in the upstream and downstream value chain).

Date: 30. October 2023 | Valid until: 30. October 2025
Verified by:

Julie Marie Vejsgaard Larsen, LCA & EPD Consultant

Verification based on report: Validation of CO₂ calculation of 9 categories of Kompan product line, version 1.0, prepared by: Bureau Veritas HSE, Denmark: Julie M. V. Larsen.

Publication date: 30. October 2023

By Bureau Veritas HSE
www.bureauveritas.dk
+45 7731 1000

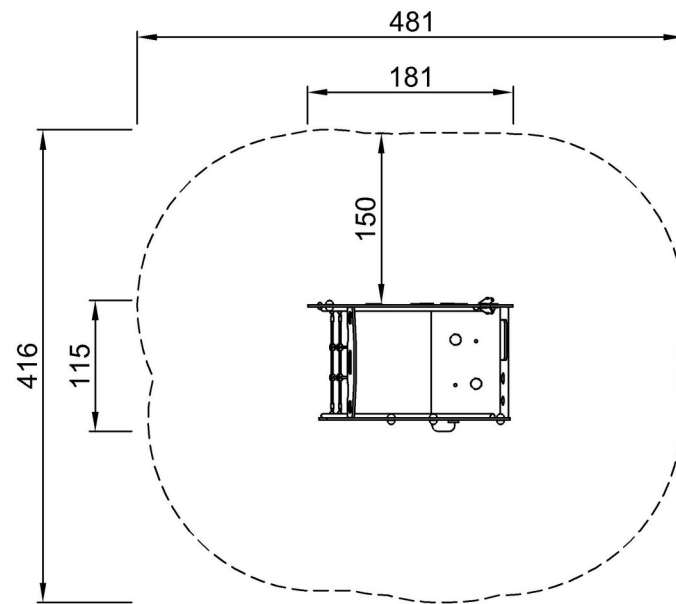


Forest Giraffe

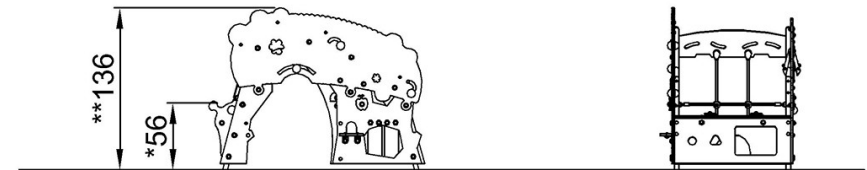
MSC5416

* Max fall height | ** Total height | *** Safety surfacing area

* Max fall height | ** Total height



MSC541600P
*56cm
**136cm
***17.2m²



MSC541600P

[Click to see TOP VIEW](#)

[Click to see SIDE VIEW](#)