

Ocean Giant L+XL & Mid Tower

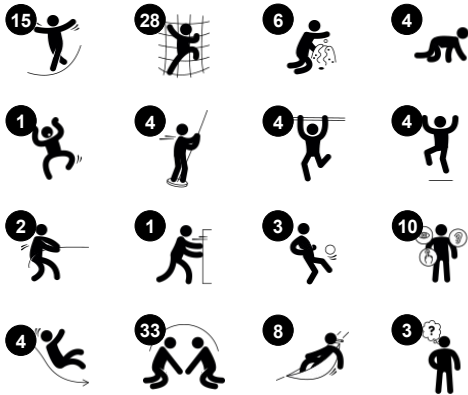
PCT310221



产品编号 PCT310221-0901

产品信息概览

长宽高尺寸	1866x1503x891 cm
适用年龄段	6+
容纳人数	100
颜色选择	



WOW! The Ocean Giant L + XL is an amazing playscape with sky high climbs and slide rides, hugely thrilling. The unique variety of speedy slides and glides, gentle sways and stays and not least wild climbs attract vigorous play, over and over. The see-through towers are meandering climbs inside, developing children's muscles and coordination with steep

steps and open ropes. The open and closed slides and glides offer each their fast rides. This is severe fun. It stimulates social-emotional skills such as self-regulation, risk-taking and empathy. The balance bridges and climbers add thrill out in the open. They stimulate the senses of balance and space. That matters for children's ability to manage

streets securely. Varied places for swaying, talking tubes and tic-tac-toe make a ground level that adds opportunities to chill and make friends in play.



Ocean Giant L+XL & Mid Tower

PCT310221

KOMPAN
Let's play



Wackle bridge

身体素质：可以训练平衡感和空间感，以及身体姿势，对静坐能力非常重要。**社交情感：**培养合作、轮流意识，鼓励友好竞赛。



Banister bars

身体素质：跳下来时，身体的协调性、手臂和核心肌肉都会得到发展。落地运动可增强骨密度，为童年生活做好准备。**社交情感：**训练轮流意识和风险意识。



Long tube slide

身体素质：玩滑梯可以训练空间意识和平衡感。**社交情感：**高度带来了刺激的速度和快感。通过轮流玩耍和为他人着想来激发同理心。停在超长滑道口时可获得安全感。



Peak climber

身体素质：cross coordination and muscle strength are developed when climbing and crawling across the unequally dispersed ropes. Balance and spatial awareness are supported when standing on turning spheres or climbing across or up. **社交情感：**当与朋友坐在一起并进行交流时，培养轮番发言和社交技能。



Movable hammock

身体素质：在摇摆时可以训练平衡感，感受躺下时的身体压力。**社交情感：**和朋友见面，轻轻地前后推朋友，轮流玩耍。**创造力：**changing direction and position of hammock.



Rope climber

身体素质：children develop cross coordination when climbing and upper body muscles when pulling themselves upwards in the support ropes. **社交情感：**place for meeting, taking a break and socializing.



Tic-tac-toe panel

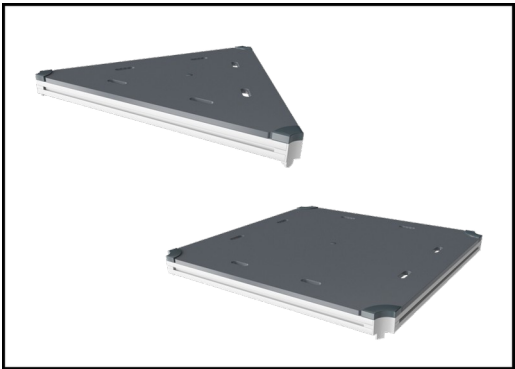
社交情感：stimulates communication and turn-taking skills. **认知能力：**培养规则理解能力和战略思维。**创造力：**leaving marks when tumblers are left in new positions.

Ocean Giant L+XL & Mid Tower

PCT310221



19 毫米 EcoCore™ 面板。EcoCore™ 是一种高度耐用、环保的材料，不仅在使用后可回收利用，而且还包含由 100 % 食品包装可循环材料制成的芯。



所有平台底板均由独特设计的低碳铝型材支撑，并具有多种加配选择。灰色模制平台底板由 75% 消费后的海洋可循环 PP 材料制成，具有防滑图案和表面纹理。



主立柱采用合金材料，提高了抗拉强度和韧性，确保高塔结构的完整性。具有热浸镀锌底座和粉末涂层表面处理，使用寿命长。

产品编号 PCT310221-0901	
安装信息	
最大跌落高度	284 cm
安全面积	214.5 m²
安装总时长	314.9
开挖量	25.29 m³
混凝土使用量	11.49 m³
标准入地深度	90 cm
运输重量	6,993 kg
固定选项	入地 ✓ 地表 ✓
质保信息	
EcoCore HDPE	终身质保
热镀锌钢柱	终身质保
PP 板	10 年
绳网	10 年
承保零部件	10 年



优质聚碳酸酯，厚度 15mm。图形采用独特的多层打印工艺，内层为图像，外层为透明层保护。聚碳酸酯面板和水性漆都是防紫外线的，不易褪色。



完全焊接的钢框架，带有直径为 4mm 的圆形钢销的 45° 交叉焊接钢网格。气流面板有助于 GIANT 塔的整体结构完整性。



PE 或不锈钢材料的弯曲和笔直的隧道滑梯，带有支撑腿。KOMPAN 隧道滑梯的设计具有完美的倾斜度，可带来有趣的游戏体验。



Sustainability Data

PCT310221



从原材料到成品	CO ₂ 排放总量	CO ₂ 排放量 / 千克	回收的原料
	kg CO ₂ e	kg CO ₂ e/kg	%
PCT310221-0901	16,554.50	3.01	51.90

这些因素采用的总体框架为环保产品声明 (EPD)，该声明可量化“产品生命周期的环保信息，并对相同功能的产品进行对比” (ISO, 2006)。在遵循该框架的同时，对从原材料到制造的整个产品阶段 (A1-A3) 应用生命周期评估法。

Verification of CO₂ calculation of: Play systems



Data version no. 2023-10-05

The CO₂ calculation and data are in compliance with the principles of a carbon footprint impact according to the GHG protocol (Greenhouse Gas Protocol), Scope 3, cradle to gate related to all individual components in the product category: "Play systems" represented by item no.: PCM200321-0950.

(Scope 3 emissions include emission sources in the upstream and downstream value chain).

Date: 30. October 2023 | Valid until: 30. October 2025

Verified by:

Julie Marie Vejsgaard Larsen, LCA & EPD Consultant

Verification based on report: Validation of CO₂ calculation of 9 categories of Kompan product line, version 1.0, prepared by: Bureau Veritas HSE, Denmark: Julie M. V. Larsen.

Publication date: 30. October 2023

Validation of CO₂ calculation method
BUREAU VERITAS
HSE Denmark A/S



By Bureau Veritas HSE
www.bureauveritas.dk
+45 7731 1000

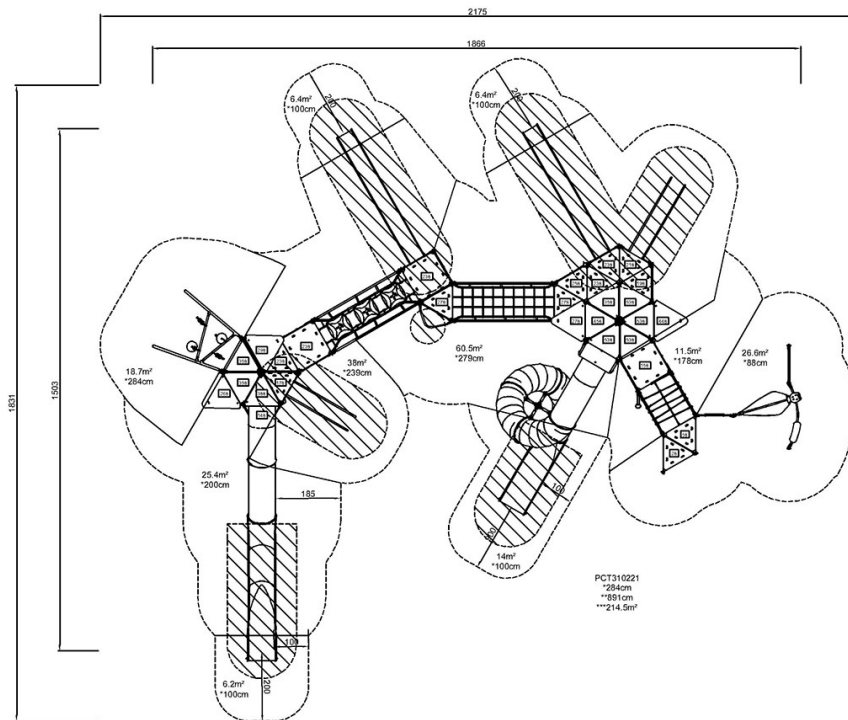


Ocean Giant L+XL & Mid Tower

PCT310221

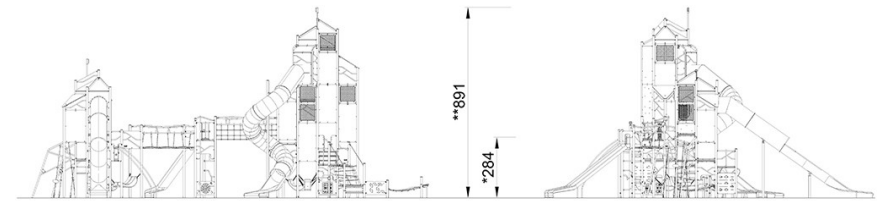


最大跌落高度 | 总高度 | 安全区域

[点击查看俯视图](#)

5 / 04/26/2024

最大跌落高度 | 总高度



PCT310221

[点击查看侧面图](#)

数据如有更新，恕不另行通知。