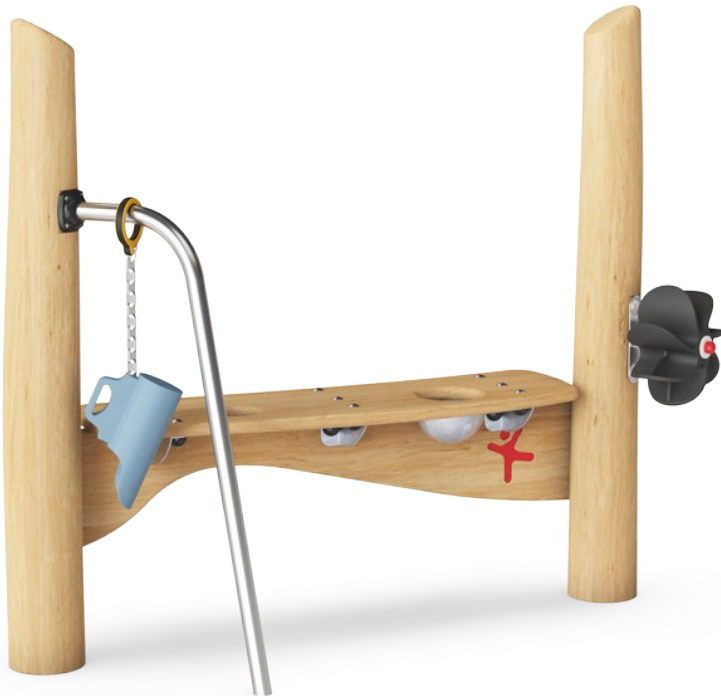




# Sand Desk

NRO510



Item no. NRO510-0601	
General Product Information	
Dimensions LxWxH	163x53x133 cm
Age group	1+
Play capacity (users)	5
Colour options	 



This lovely sand desk invites hours of explorative play with its sand wheel, sand scoop and little sand holders in the counter. All of these items, with their varied textures and functionalities provide great tactile stimulation of the fine motor skills. They also provide an understanding of cause and effect: when I pour sand over the sand wheel, it turns. This

contributes to thinking skills and general cognitive development. The sand play unit can cater for smaller groups of children providing, sorting or selling materials they have found or created in the playground. These explorative and dramatic play scenarios support children's negotiation and communication skills, as well as their language skills. This is a

fundamental part of children's cognitive-creative development.



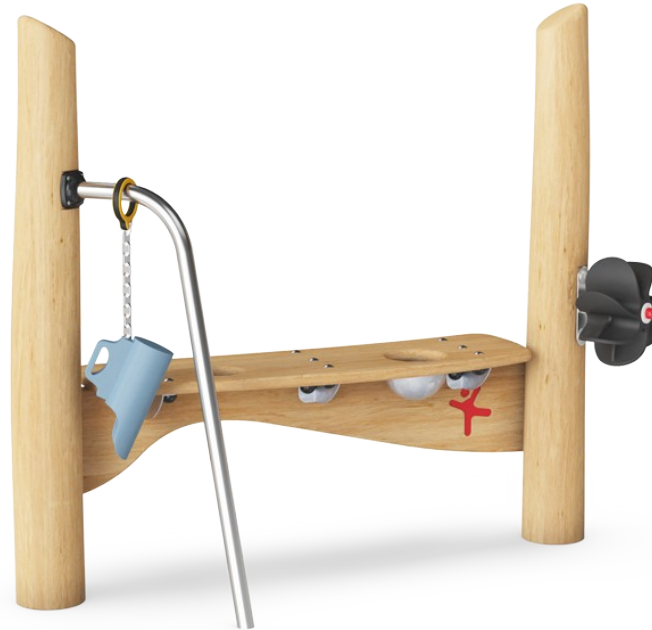
# Sand Desk

NRO510



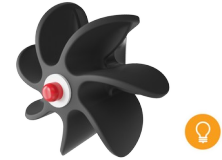
## Sand desk with bowl and sieve

**Social-Emotional:** children can gather and store materials, cooperate and take a break together. **Creative:** sand can be shifted through the sieve, for understanding of cause and effect and object permanence.



## Sand shovel

**Physical:** develops dexterity and upper body muscles. **Cognitive:** understanding of object permanence, emptying and filling scoop.



## Sand wheel

**Cognitive:** the turning sand wheel stimulates cause and effect understanding.

# Sand Desk

NRO510



All Organic Robinia products by KOMPAN are made of Robinia wood from sustainable European sources. On request it can be supplied as FSC® Certified (FSC® C004450).



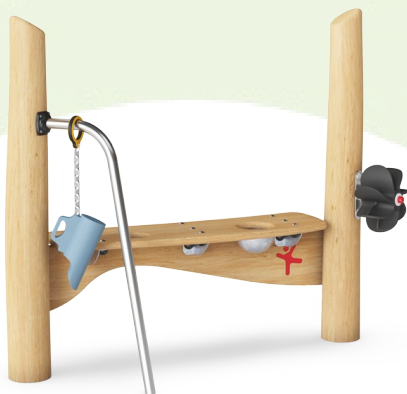
The Robinia wood can be supplied as untreated raw wood or painted with a brown coloured transparent pigment that maintains the golden wood colour of the wood.

Item no. NRO510-0601	
Installation Information	
Max. fall height	0 cm
Safety surfacing area	13.3 m²
Total installation time	3.6
Excavation volume	0.14 m³
Concrete volume	0.00 m³
Footing depth (standard)	60 cm
Shipment weight	129 kg
Anchoring options	In-ground ✓ Surface ✓
Warranty Information	
PUR components	10 years
Robinia wood	15 years
Spare parts guaranteed	10 years
Stainless steel components	Lifetime



# Sustainability Data

NRO510



Cradle to Gate A1-A3	Total CO <sub>2</sub> emission	CO <sub>2</sub> e/kg	Recycled materials
	kg CO <sub>2</sub> e	kg CO <sub>2</sub> e/kg	%
NRO510-0601	54.50	0.53	4.20

The overall framework applied for these factors is the Environmental Product Declaration (EPD), which quantifies "environmental information on the life cycle of a product and enable comparisons between products fulfilling the same function" (ISO, 2006). This follows the structure and applies a Life-Cycle Assessment approach to the entire Product stage from raw material through manufacturing (A1-A3))

**Kompan A/S**  
C.F. Tietgens Boulevard 32C  
DK-5220 Odense SØ  
Denmark



## Verification of CO<sub>2</sub> calculation of: Nature play



Data version no. 2023-10-05

The CO<sub>2</sub> calculation and data are in compliance with the principles of a carbon footprint impact according to the GHG protocol (Greenhouse Gas Protocol), Scope 3, cradle to gate related to all individual components in the product category: "Nature play" represented by item no.: NRO409-0621.

(Scope 3 emissions include emission sources in the upstream and downstream value chain).

**Date: 30. October 2023 | Valid until: 30. October 2025**  
**Verified by:**

Julie Marie Vejsgaard Larsen, LCA & EPD Consultant

Verification based on report: Validation of CO<sub>2</sub> calculation of 9 categories of Kompan product line, version 1.0, prepared by: Bureau Veritas HSE, Denmark: Julie M. V. Larsen.

**Publication date: 30. October 2023**

**By Bureau Veritas HSE**  
www.bureauveritas.dk  
+45 7731 1000

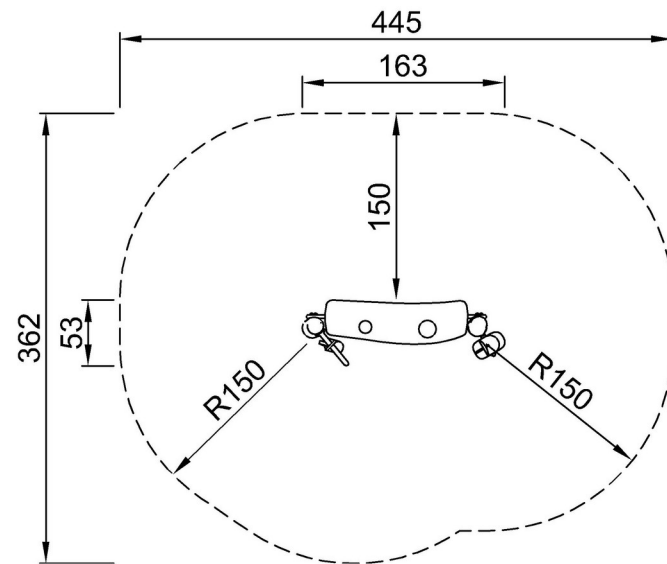


# Sand Desk

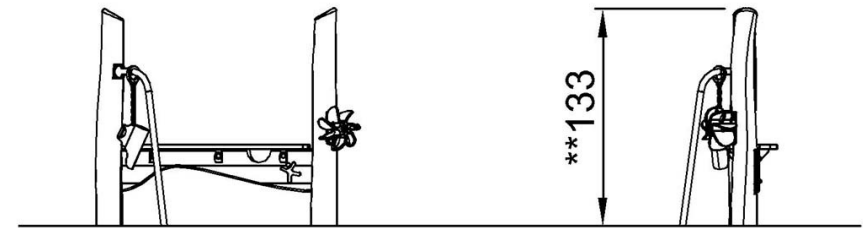
NRO510

\* Max fall height | \*\* Total height | \*\*\* Safety surfacing area

\* Max fall height | \*\* Total height



NRO510  
\*\*133cm  
\*\*\*13.3m<sup>2</sup>



NRO510

[Click to see TOP VIEW](#)

[Click to see SIDE VIEW](#)