

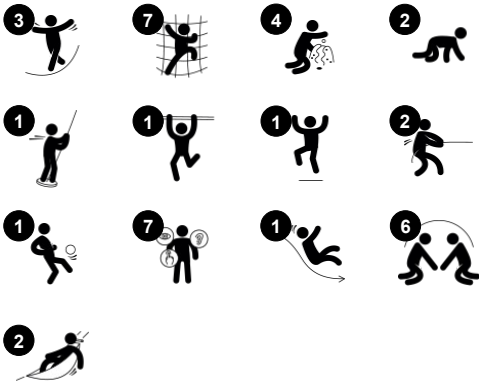
# Tower with Track Ride

PCM114121

Item no. PCM114121-0951

**General Product Information**

|                       |   |
|-----------------------|---|
| Dimensions LxWxH      | 869x690x412 cm  |
| Age group             | 6+  |
| Play capacity (users) | 13  |
| Colour options        |  |



The Tower with Track Ride offers varied physical and social play for school age kids, with dare devil as well as socialising activities. Gliding through the air on a wire is immense fun for school age kids, which attracts them to try again and again and play for longer. If the Track Ride gets too demanding, a step up from the platform gives the child access to a nice

curved slide, offering a thrilling ride to the ground level. This slide can also be accessed via the rappelling access: a challenging and fun climb that demands full concentration and focus on cross-coordination, balance and muscles. Under the platform, a break can be had with a friend, seated opposite one another on the two swaying hammocks, or alternatively,

playing with the fascinating hourglass in the panel under the platform.

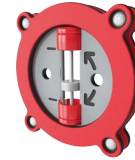
# Tower with Track Ride

PCM114121



## Track Ride

**Physical:** train arm and core muscles. Bone density when jumping down from the handholds and motor skills like agility, balance and coordination are supported. **Social-Emotional:** cooperation, consideration, turn-taking, risk-taking, self-confidence.



## Timer

**Social-Emotional:** teams can each have a button to measure rounds, wins etc. The buttons support cooperation and teamwork. **Cognitive:** counting and registering support thinking skills such as logical thinking and sequencing. **Creative:** children can leave their mark, placing the timer in different positions.



## Climbing net

**Physical:** supports physical strength and cross-body coordination, which impacts coordination of the right and left part of brain, fundamental for other skills such as the ability to read.



## Hammock

**Physical:** coordination and sense of balance when swaying. **Social-Emotional:** meeting, pushing friends gently back and forth, turn-taking.



## Pipe rapella

**Physical:** supports cross coordination, proprioception and sense of space. Leg and core muscles are used intensely. Upper body muscles are developed when children pull themselves upwards in the rope. **Social-Emotional:** turn-taking and self-regulation, both important life skills.



## Curved slide

**Physical:** sliding develops spatial awareness and a sense of balance. Furthermore, the core muscles are trained when sitting upright going down. **Social-Emotional:** empathy stimulated by turn-taking.



## Balcony

**Social-Emotional:** the balcony invites meetings and interaction with people on ground level. **Cognitive:** invites dramatic play and performance, which stimulates language development.

# Tower with Track Ride

PCM114121



Panels of 19mm EcoCore™. EcoCore™ is a highly durable, eco friendly material, which is not only recyclable after use, but also consists of material produced from +95% recycled post consumer material from food packing waste.



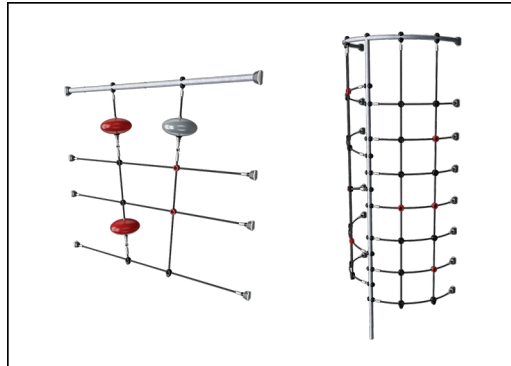
All decks are supported by unique designed low-carbon aluminum profiles with multiple attachment options. The grey colored molded decks are made of 75% post-consumer waste PP material with a non-skid pattern and texture surface.



Main posts with hot dip galvanized steel footing are available in different materials: Pressure impregnated pine wood posts. Pre-galvanized inside and outside with powder coated top finish steel posts. Lead free aluminum with color anodized top finish. Greenline TexMade posts of 95% post-consumer recycled PE and textile waste.



The slides can be chosen in six different colors and three materials: Straight or curved one-piece molded PE slides, made from 33% recycled post-consumer materials in different colours. Combined EcoCore™ sides and stainless-steel. Full stainless steel in one piece design for more vandalism proof solutions.



Ropes of UV-stabilized PES rope strands with inner steel cable reinforcement. The polyester yarn is made from +95% post-consumer materials and is inductively melted onto each strand.



KOMPAN GreenLine versions are designed with ultimate environmentally friendly materials with lowest possible CO2e emission factor. TexMade post, EcoCore™ panels of 95% post-consumer recycled waste and molded PP decks.

Item no. PCM114121-0951

## Installation Information

|                          |                          |
|--------------------------|--------------------------|
| Max. fall height         | 178 cm                   |
| Safety surfacing area    | 54.6 m²                  |
| Total installation time  | 25.1                     |
| Excavation volume        | 0.89 m³                  |
| Concrete volume          | 0.10 m³                  |
| Footing depth (standard) | 90 cm                    |
| Shipment weight          | 872 kg                   |
| Anchoring options        | Surface ✓<br>In-ground ✓ |

## Warranty Information

|                        |          |
|------------------------|----------|
| EcoCore HDPE           | Lifetime |
| PE slide               | 10 years |
| Post                   | 10 years |
| PP Decks               | 10 years |
| Spare parts guaranteed | 10 years |



# Sustainability Data

PCM114121



| Cradle to Gate A1-A3 | Total CO <sub>2</sub> emission | CO <sub>2</sub> e/kg    | Recycled materials |
|----------------------|--------------------------------|-------------------------|--------------------|
|                      | kg CO <sub>2</sub> e           | kg CO <sub>2</sub> e/kg | %                  |
| PCM114121-0951       | 1,267.30                       | 2.02                    | 63.50              |
| PCM114121-0905       | 1,466.30                       | 2.59                    | 53.10              |

The overall framework applied for these factors is the Environmental Product Declaration (EPD), which quantifies "environmental information on the life cycle of a product and enable comparisons between products fulfilling the same function" (ISO, 2006). This follows the structure and applies a Life-Cycle Assessment approach to the entire Product stage from raw material through manufacturing (A1-A3))

## Verification of CO<sub>2</sub> calculation of: Play systems



Data version no. 2023-10-05

The CO<sub>2</sub> calculation and data are in compliance with the principles of a carbon footprint impact according to the GHG protocol (Greenhouse Gas Protocol), Scope 3, cradle to gate related to all individual components in the product category: "Play systems" represented by item no.: PCM200321-0950.

(Scope 3 emissions include emission sources in the upstream and downstream value chain).

Date: 30. October 2023 | Valid until: 30. October 2025

Verified by:

Julie Marie Vejsgaard Larsen, LCA & EPD Consultant

Verification based on report: Validation of CO<sub>2</sub> calculation of 9 categories of Kompan product line, version 1.0, prepared by: Bureau Veritas HSE, Denmark: Julie M. V. Larsen.

Publication date: 30. October 2023



By Bureau Veritas HSE  
www.bureauveritas.dk  
+45 7731 1000

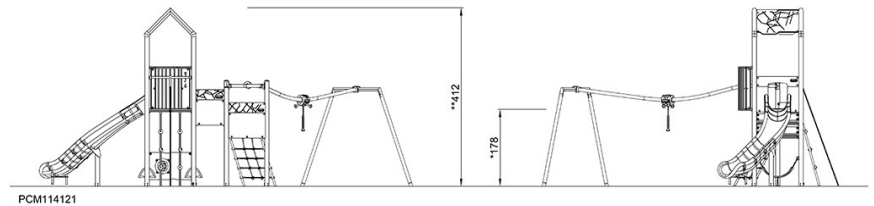
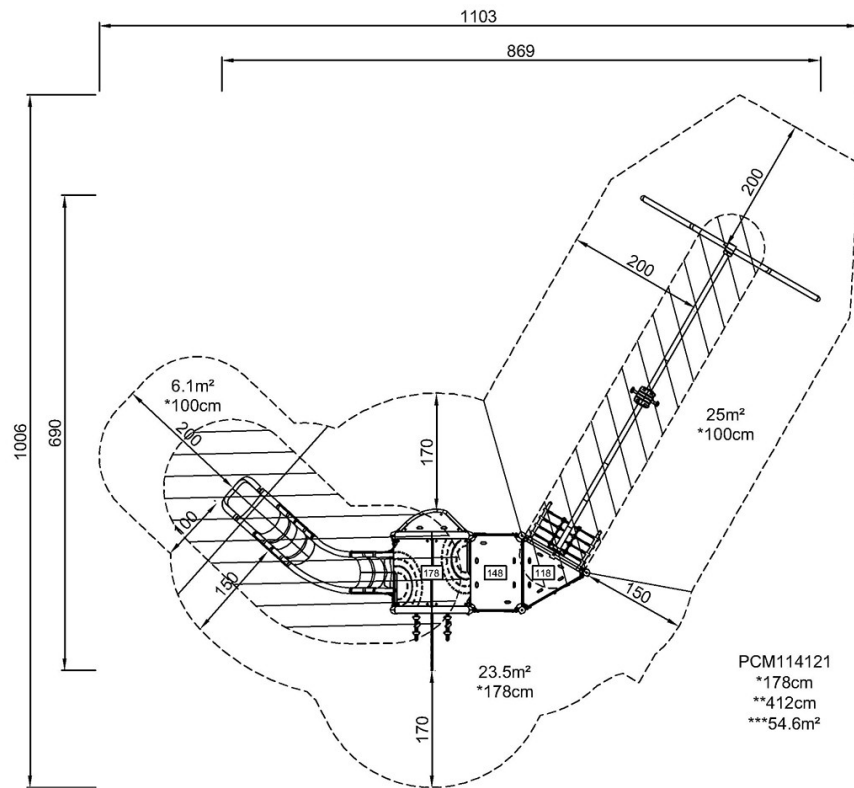


# Tower with Track Ride

PCM114121

\* Max fall height | \*\* Total height | \*\*\* Safety surfacing area

\* Max fall height | \*\* Total height



[Click to see TOP VIEW](#)

[Click to see SIDE VIEW](#)