

Double Tower with Spider Net ADA

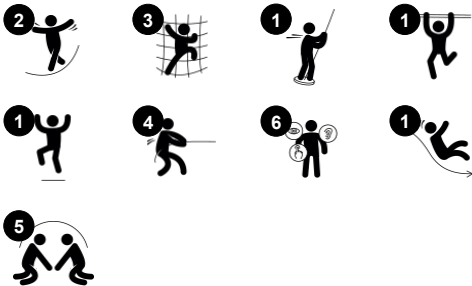
NRO2009



This two-tower structure, with its wide variety of climbing, sliding and balancing attributes invites a big group of children for fun and challenging physical play activity. The spider net with its inclined rope rungs sees a lot of children using their cross-body coordination to climb through the net. From the net, access is then provided to the roomy platform, from

where the slide takes the child back down to ground level. This platform can also be accessed by the stairway which is designed to make it accessible from a walker/wheelchair. The product is available as FSC® Certified (FSC® C004450) robinia wood on request.

| | |
|-----------------------------|----------------|
| Item no. NRO2009-1021 | |
| General Product Information | |
| Dimensions LxWxH | 822x679x417 cm |
| Age group | 4+ |
| Play capacity (users) | 27 |
| Colour options | |



Double Tower with Spider Net ADA

NRO2009



Net bridge

Physical: children develop spatial awareness in the open net. **Social-Emotional:** interaction with children outside, socializing. Cooperation and consideration, e.g. when passing others.



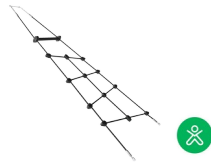
Side desk

Social-Emotional: fine meeting place and a space creator. Sharing and cooperation from both sides create a social scenario that supports communication and cooperation.



Fireman's pole

Physical: coordination is supported when going down, as well as arm and core muscles. Landing strengthens bone density, which is built for life in early childhood. **Social-Emotional:** turn-taking and risk-taking.



Climbing net

Physical: the inclined net supports the upward climbing movement of the body. The net supports cross-body coordination, which impacts coordination of the right and left part of brain, fundamental for other skills such as the ability to read. The asymmetry of the net challenges the children's climbing.



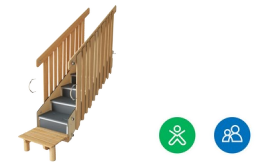
Slide

Physical: sliding develops spatial awareness and a sense of balance. Furthermore, the core muscles are trained when sitting upright going down. **Social-Emotional:** empathy stimulated by turn-taking.



Vertical spider net

Physical: cross coordination is supported when crawling through, over and across the net. This supports the cooperation of left and right brain half, important for skills such as reading. The core, arm and leg muscles are strengthened. **Social-Emotional:** taking a break together in the net and waiting for others to cross supports social abilities such as cooperation and communication.



Accessible stairway

Physical: climbing the accessible stairway is for all and supports cross coordination as well as arm and leg muscles. For young children, walking stairs and alternating feet is developed. **Social-Emotional:** room for active breaks and adult helpers. An inclusive space.

Double Tower with Spider Net ADA

NRO2009



All Organic Robinia products by KOMPAN are made of Robinia wood from sustainable European sources. On request it can be supplied as FSC® Certified (FSC® C004450).

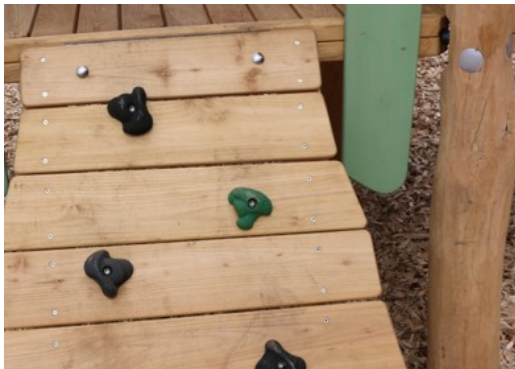


The paint used for coloured components is water based environmental friendly with excellent UV resistance. The paint is in compliance with EN 71 Part 3.



The Robinia products are designed with a KOMPAN colour concept with a number of different standard colours. The wood can also be supplied as untreated or with brown painted with a pigment that maintains the wood colour.

| | |
|----------------------------|-------------|
| Item no. NRO2009-1021 | |
| Installation Information | |
| Max. fall height | 209 cm |
| Safety surfacing area | 68.0 m² |
| Total installation time | 36.4 |
| Excavation volume | 2.29 m³ |
| Concrete volume | 0.32 m³ |
| Footing depth (standard) | 100 cm |
| Shipment weight | 1,841 kg |
| Anchoring options | In-ground ✓ |
| Warranty Information | |
| Robinia wood | 15 years |
| Ropes & nets | 10 years |
| Spare parts guaranteed | 10 years |
| Stainless steel components | Lifetime |



The product/activities are preassembled from the factory to ensure all safety requirements are considered.



The hardware is made of stainless steel or galvanised steel to ensure durable connections with a high corrosion resistance.



Sustainability Data

NRO2009



| Cradle to Gate A1-A3 | Total CO ₂ emission | CO ₂ e/kg | Recycled materials |
|----------------------|--------------------------------|-------------------------|--------------------|
| | kg CO ₂ e | kg CO ₂ e/kg | % |
| NRO2009-1021 | 938.10 | 0.65 | 7.30 |

The overall framework applied for these factors is the Environmental Product Declaration (EPD), which quantifies "environmental information on the life cycle of a product and enable comparisons between products fulfilling the same function" (ISO, 2006). This follows the structure and applies a Life-Cycle Assessment approach to the entire Product stage from raw material through manufacturing (A1-A3))

Kompan A/S
C.F. Tietgens Boulevard 32C
DK-5220 Odense SØ
Denmark



Verification of CO₂ calculation of: Nature play



Data version no. 2023-10-05

The CO₂ calculation and data are in compliance with the principles of a carbon footprint impact according to the GHG protocol (Greenhouse Gas Protocol), Scope 3, cradle to gate related to all individual components in the product category: "Nature play" represented by item no.: NRO409-0621.

(Scope 3 emissions include emission sources in the upstream and downstream value chain).

Date: 30. October 2023 | Valid until: 30. October 2025
Verified by:

Julie Marie Vejsgaard Larsen, LCA & EPD Consultant

Verification based on report: Validation of CO₂ calculation of 9 categories of Kompan product line, version 1.0, prepared by: Bureau Veritas HSE, Denmark: Julie M. V. Larsen.

Publication date: 30. October 2023

By Bureau Veritas HSE
www.bureauveritas.dk
+45 7731 1000

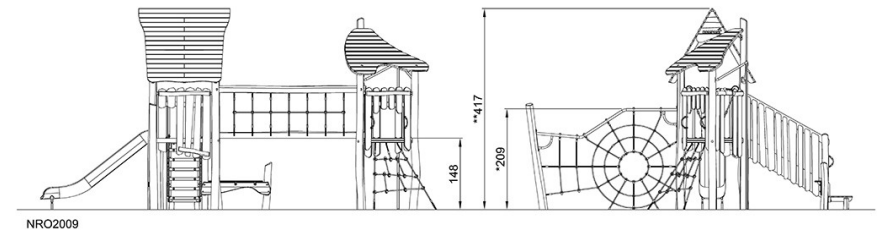
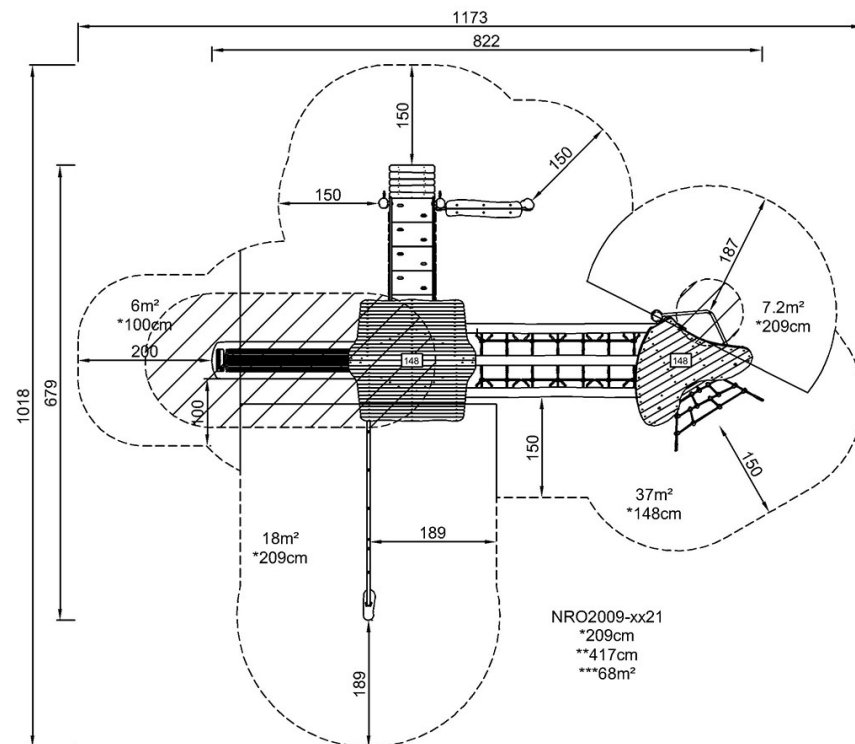


Double Tower with Spider Net ADA

NRO2009

* Max fall height | ** Total height | *** Safety surfacing area

* Max fall height | ** Total height



[Click to see TOP VIEW](#)

[Click to see SIDE VIEW](#)