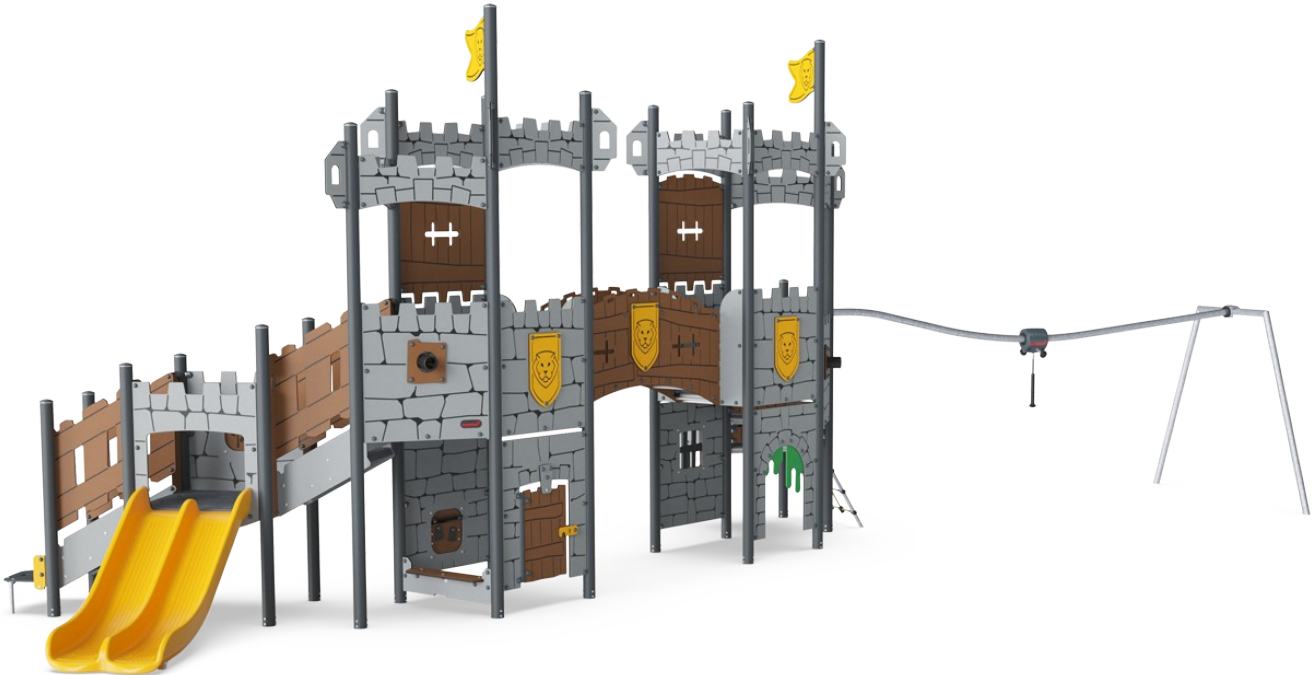

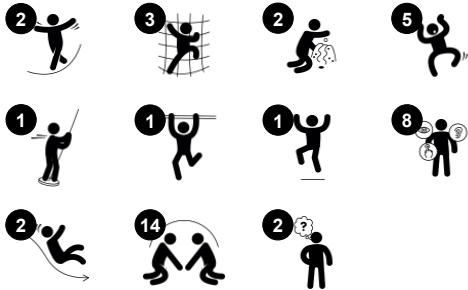


# Castle's Outer Gate

PCM212531



Item no. PCM212531-0901	
General Product Information	
Dimensions LxWxH	1098x1151x470 cm
Age group	4 - 12
Play capacity (users)	35
Colour options	



Wow! The Keep with Track Ride is a fabulous play structure. The rich variation of play challenges will attract and stimulate hours of play, again and again. The inclined climbing accesses support cross-coordination, which in turn supports intellectual development. The two towers and the curved bridge make fine outlook posts. The double slide adds thrill and takes

children back to the ground in social play. Sliding additionally trains the sense of balance. On the other side of the Keep, a rousing track ride adds thrill and trains the sense of space, fundamental for managing the world securely. Under platforms there are spaces for dramatic and social play, with special surprises such as the treasure chest or slime door, which will

inspire dramatic play and stimulate language development.

# Castle's Outer Gate

PCM212531



## Track Ride

**Physical:** train arm and core muscles. Bone density when jumping down from the handholds and motor skills like agility, balance and coordination are supported. **Social-Emotional:** cooperation, consideration, turn-taking, risk-taking, self-confidence.



## Cannon

**Cognitive:** the cannon set a tangible theme and thus spur dramatic play. Dramatic play supports language and communication skills.



## Climbing net

**Physical:** supports physical strength and cross-body coordination, which impacts coordination of the right and left part of brain, fundamental for other skills such as the ability to read.



## Slime door

**Physical:** tactile stimulation from moving the body through rubber slime door. **Social-Emotional:** stimulates turn-taking.



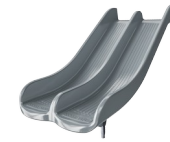
## Bench

**Social-Emotional:** gathering, cooperating or taking a break from play - all train social skills.



## Treasure box

**Cognitive:** object permanence: hiding objects and finding them again. Spurs exploration and dramatic play, stimulating conversations.



## Double slide

**Physical:** sliding develops spatial awareness and a sense of balance. Furthermore, the core muscles are trained when sitting upright going down. **Social-Emotional:** invites socializing, supports parent-child, peer-to-peer play and allows for caregiver assistance.

# Castle's Outer Gate

PCM212531



Panels of 19mm EcoCore™. EcoCore™ is a highly durable, eco friendly material, which is not only recyclable after use, but also consists of material produced from +95% recycled post consumer material from food packing waste.



Main posts with hot dip galvanised steel footing are available in different materials: Pressure impregnated pine wood posts. Pre-galvanised inside and outside with powder coated top finish steel posts. Lead free aluminium with colour anodised top finish.



All decks are supported by unique designed low-carbon aluminum profiles with multiple attachment options. The grey colored molded decks are made of 75% post-consumer waste PP material with a non-skid pattern and texture surface.

Item no. PCM212531-0901	
Installation Information	
Max. fall height	249 cm
Safety surfacing area	93.0 m²
Total installation time	47.5
Excavation volume	2.30 m³
Concrete volume	0.96 m³
Footing depth (standard)	90 cm
Shipment weight	1,857 kg
Anchoring options	In-ground ✓ Surface ✓
Warranty Information	
EcoCore HDPE	Lifetime
Post	10 years
PP Decks	10 years
Ropes & nets	10 years
Spare parts guaranteed	10 years



The slides can be chosen in different materials and colours: Straight or curved moulded PE slides in yellow or grey colour. Full stainless steel in on-piece design for more vandalism proof solutions.



The hang-on puller is designed with at welded steel core and covered with low-density PE housing. The two hot dip galvanised steel handles are angled to provide best possible ergonomic while gliding. The wheels of the puller are made of low noise TPU and installed with sealed ball bearings.



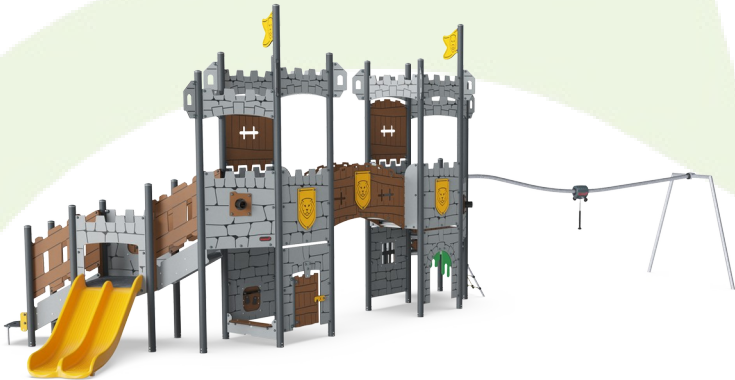
Nets and ropes are made of UV-stabilised PA with inner steel cable reinforcement. The rope is induction treated in order to create a strong connection between steel and rope which leads to good wear resistance.

Elevated activities 8	Accessible elevated activities	Accessible ground level activities	Accessible ground level play types
Present	4	4	1
Required	4	3	3

**CSA**  
**Z614**  
compliant

# Sustainability Data

PCM212531



Cradle to Gate A1-A3	Total CO <sub>2</sub> emission	CO <sub>2</sub> e/kg	Recycled materials
	kg CO <sub>2</sub> e	kg CO <sub>2</sub> e/kg	%
PCM212531-0901	2,729.80	2.05	66.10

The overall framework applied for these factors is the Environmental Product Declaration (EPD), which quantifies "environmental information on the life cycle of a product and enable comparisons between products fulfilling the same function" (ISO, 2006). This follows the structure and applies a Life-Cycle Assessment approach to the entire Product stage from raw material through manufacturing (A1-A3))

## Verification of CO<sub>2</sub> calculation of: Themed play systems



Data version no. 2023-10-05

The CO<sub>2</sub> calculation and data are in compliance with the principles of a carbon footprint impact according to the GHG protocol (Greenhouse Gas Protocol), Scope 3, cradle to gate related to all individual components in the product category: "Themed play systems" represented by item no.: MSC641100-3717P.

(Scope 3 emissions include emission sources in the upstream and downstream value chain).

Date: 30. October 2023 | Valid until: 30. October 2025

Verified by:

Julie Marie Vejsgaard Larsen, LCA & EPD Consultant

Verification based on report: Validation of CO<sub>2</sub> calculation of 9 categories of Kompan product line, version 1.0, prepared by: Bureau Veritas HSE, Denmark: Julie M. V. Larsen.

Publication date: 30. October 2023



By Bureau Veritas HSE  
www.bureauveritas.dk  
+45 7731 1000



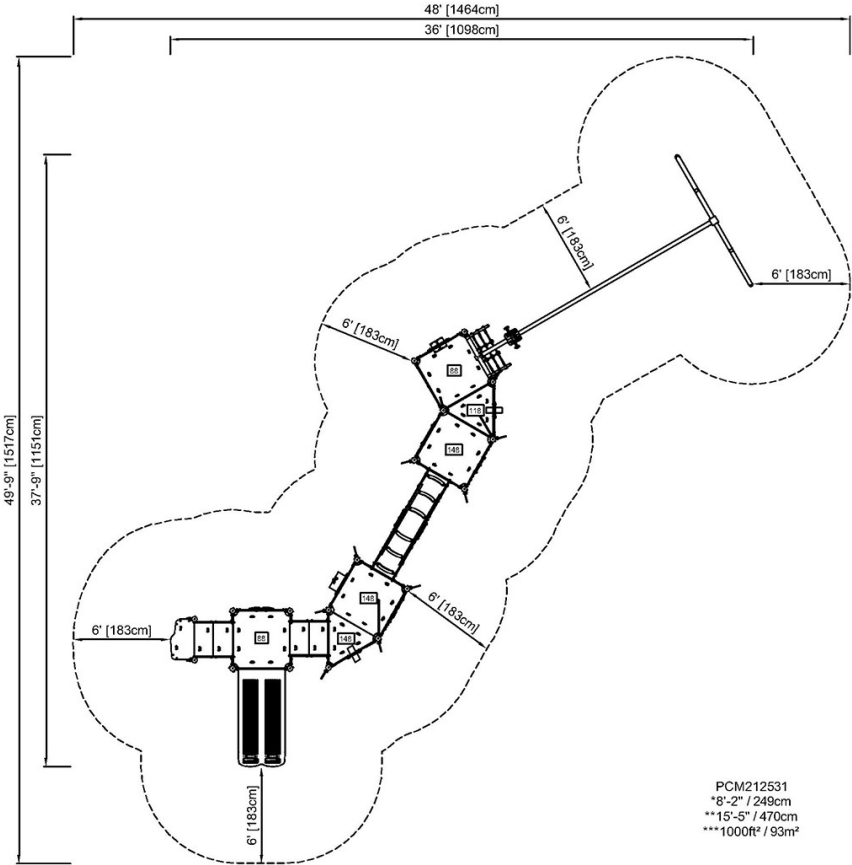


# Castle's Outer Gate

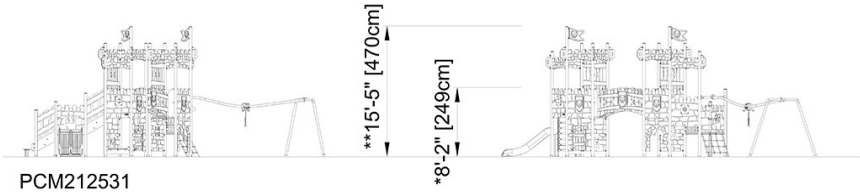
PCM212531

\* Max fall height | \*\* Total height | \*\*\* Safety surfacing area

\* Max fall height | \*\* Total height



PCM212531  
\*8'-2" / 249cm  
\*\*15'-5" / 470cm  
\*\*\*1000ft² / 93m²



PCM212531

[Click to see TOP VIEW](#)

[Click to see SIDE VIEW](#)