

Splash Table

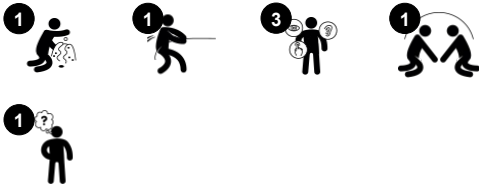
NRO506



Item no. NRO506-0601

General Product Information

Dimensions LxWxH	115x115x62 cm
Age group	2+
Play capacity (users)	8
Colour options	 



If you want the dynamic fun of water play in your play space, then add in the water Splash Table. Best used in combination with other Robinia water play items, the splash table is the final destination for exactly what it is called - splashing! It is also made of beautiful hand-crafted Robinia timber, which children can touch and feel and learn what natural timber is

like.



Splash Table

NRO506



Splash table with plug

Social-Emotional: meeting point for cooperation and sharing. Develops turn-taking and cooperation. **Cognitive:** logical thinking and understanding of 'cause and effect' are trained when children stop or let go of water from the basin. **Creative:** the water plug makes changing water levels possible, which adds to logical thinking skills.



Splash Table

NRO506



All organic Robinia products by KOMPAN are made of Robinia wood which is sourced from sustainable plantation farms. On request it can be supplied as FSC® Certified (FSC® C004450).

Robinia products are available in three different wood treatment options; untreated Robinia wood or brown painted with a pigment that maintains the wood colour and coloured version with paint of selected components.

Item no. NRO506-0601	
Installation Information	
Max. fall height	0 cm
Safety surfacing area	15.2 m²
Total installation time	2.7
Excavation volume	0.17 m³
Concrete volume	0.00 m³
Footing depth (standard)	60 cm
Shipment weight	125 kg
Anchoring options	In-ground ✓ Surface ✓
Warranty Information	
Robinia Wood	15 years
Spare Parts Guarantee	10 years
Stainless Steel Components	Lifetime



Sustainability Data

NRO506



Cradle to Gate A1-A3	Total CO ₂ emission	CO ₂ e/kg	Recycled materials
	kg CO ₂ e	kg CO ₂ e/kg	%
NRO506-0601	80.10	0.81	8.70

The overall framework applied for these factors is the Environmental Product Declaration (EPD), which quantifies "environmental information on the life cycle of a product and enable comparisons between products fulfilling the same function" (ISO, 2006). This follows the structure and applies a Life-Cycle Assessment approach to the entire Product stage from raw material through manufacturing (A1-A3))

Kompan A/S
C.F. Tietgens Boulevard 32C
DK-5220 Odense SØ
Denmark



Verification of CO₂ calculation of: Nature play



Data version no. 2023-10-05

The CO₂ calculation and data are in compliance with the principles of a carbon footprint impact according to the GHG protocol (Greenhouse Gas Protocol), Scope 3, cradle to gate related to all individual components in the product category: "Nature play" represented by item no.: NRO409-0621.

(Scope 3 emissions include emission sources in the upstream and downstream value chain).

Date: 30. October 2023 | Valid until: 30. October 2025
Verified by:

Julie Marie Vejsgaard Larsen, LCA & EPD Consultant

Verification based on report: Validation of CO₂ calculation of 9 categories of Kompan product line, version 1.0, prepared by: Bureau Veritas HSE, Denmark: Julie M. V. Larsen.

Publication date: 30. October 2023

By Bureau Veritas HSE
www.bureauveritas.dk
+45 7731 1000

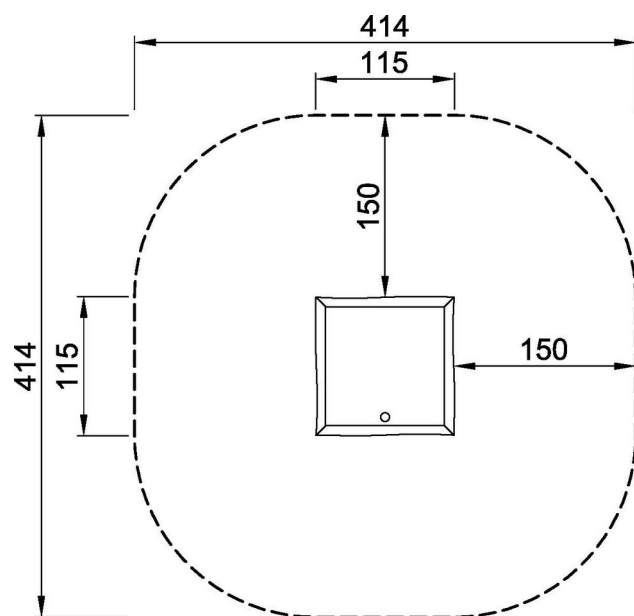


Splash Table

NRO506

* Max fall height | ** Total height | *** Safety surfacing area

* Max fall height | ** Total height



NRO506-xx01

*0cm

**62cm

***15.2m²



NRO506

[Click to see TOP VIEW](#)

[Click to see SIDE VIEW](#)