

FAZ207



来增加阻力。该专利系统还可在 Magnetic Bells 下降时起到刹车作用，并将显著降低冲击力。它的训练强度是可扩展的，使用者可以选择轻、中或重的训练重量，无论是训练有素的人还是从未训练过的人都可以使用这个器材。Magnetic Bells 可上下自由移动，并可 360° 旋转。这样，用户就可以做与 Medicine balls 和 Kettle Bell 非常相似的运动。Magnetic Bells 有 6、9 和

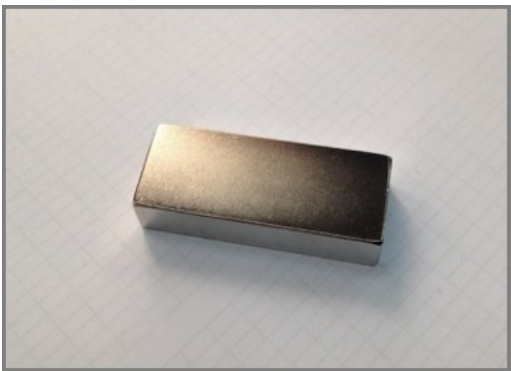


Cross Training Combi 6 Compact

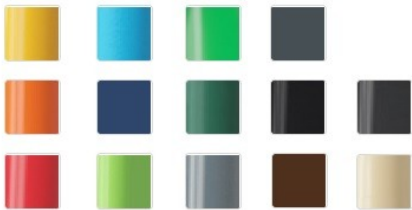
FAZ207



独特设计的磁铃是由聚氨酯和一个加固的铝钢框架制成，确保其坚固的设计。符合人体工程学的把手保证了所有用户可以拥有良好和舒适的把握。



使用的磁铁是高强度钕磁铁。磁辐射受到严格控制，辐射水平从未超过 5 高斯 (0.5mT)，这使得它们作为训练项目是非常安全的。



KOMPAN 健身产品的标准可在橙色 RAL2010 和灰色 RAL7012 中选择。所有其他 RAL 颜色都可按需选择，以匹配周边的环境或颜色主题！

产品编号 FAZ20700-0900	
安装信息	
最大跌落高度	132 cm
安全面积	24.4 m²
安装总时长	8.4
开挖量	0.60 m³
混凝土使用量	0.28 m³
标准入地深度	90 cm
运输重量	522 kg
固定选项	入地 ✓ 地表 ✓
质保信息	
涂层钢制零件	10 年
镀锌钢结构	终身质保
活动部件	2 年
PUR 部件	10 年
承保零部件	10 年



The Sign is made from a 15mm Polycarbonate and supported by Ø38.2mm top bar. This is an extremely solid assembly which provides great structural stability. The sign shows the 11 main exercises and has a QR code which refers users to the Kompan Fit APP that offers extended support on exercises and training.



The pull up bar is made from Ø32 mm HDG steel bar. The bar is 1080mm wide and 2300mm above ground

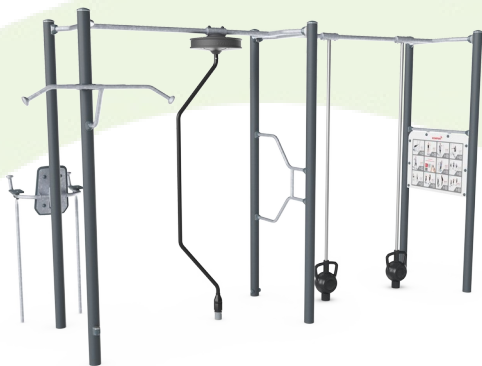


The frame of the leg lift is made from Ø38 x 2mm HDG steel tube. The support plates are made from 15mm Ekogrip®, a 15 mm PE plate with a 3 mm top-layer of thermoplastic rubber with non-skid effect. The arm supports are 110 x 195mm, 580mm apart, and 1315mm above ground. The back support is 335 x 500mm. The opening in the back is 30 x 350mm.



Sustainability Data

FAZ207



从原材料到成品	CO ₂ 排放总量	CO ₂ 排放量 / 千克	回收的原料
	kg CO ₂ e	kg CO ₂ e/kg	%
FAZ20700-0900	1,123.60	3.65	42.60

这些因素采用的总体框架为环保产品声明 (EPD)，该声明可量化“产品生命周期的环保信息，并对相同功能的产品进行对比” (ISO, 2006)。在遵循该框架的同时，对从原材料到制造的整个产品阶段 (A1-A3) 应用生命周期评估法。



Kompan A/S
C.F. Tietgens Boulevard 32C
DK-5220 Odense SØ
Denmark



Verification of CO₂ calculation of: Fitness



Data version no. 2023-10-05

The CO₂ calculation and data are in compliance with the principles of a carbon footprint impact according to the GHG protocol (Greenhouse Gas Protocol), Scope 3, cradle to gate related to all individual components in the product category: "Fitness" represented by item no.: FAZ10100-0900.

(Scope 3 emissions include emission sources in the upstream and downstream value chain).

Date: 30. October 2023 | Valid until: 30. October 2025
Verified by:

Julie Marie Vejsgaard Larsen, LCA & EPD Consultant

Verification based on report: Validation of CO₂ calculation of 9 categories of Kompan product line, version 1.0, prepared by: Bureau Veritas HSE, Denmark: Julie M. V. Larsen.

Publication date: 30. October 2023

By Bureau Veritas HSE
www.bureauveritas.dk
+45 7731 1000

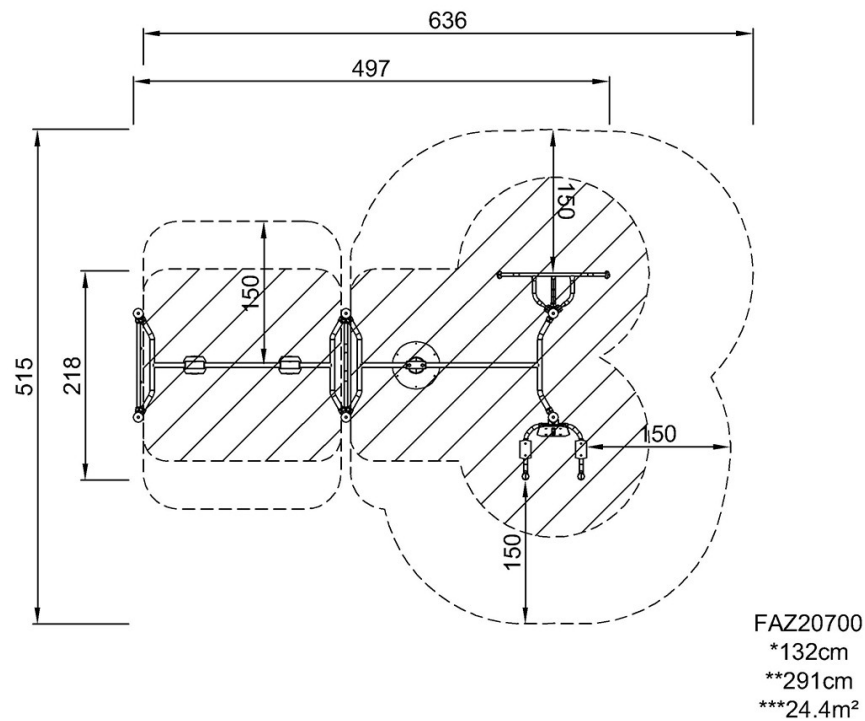


Cross Training Combi 6 Compact

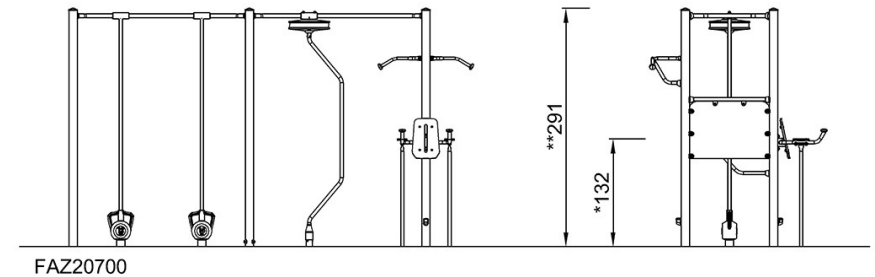
FAZ207

最大跌落高度 | 总高度 | 安全区域

最大跌落高度 | 总高度



[点击查看俯视图](#)



[点击查看侧面图](#)