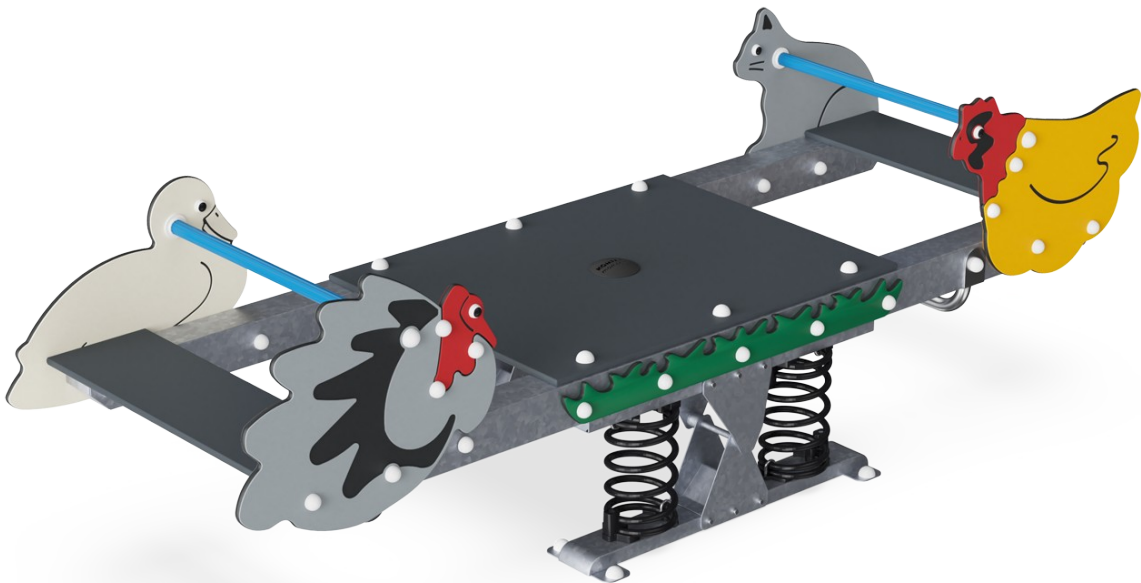


Fairytale Seesaw

M176



Item no. M17601-01P

General Product Information

Dimensions LxWxH	108x328x99 cm
Age group	3+
Play capacity (users)	10
Colour options	



The Fairytale Seesaw motivates children to join in play, rocking together. The spacious design and sturdy back and foot support allow for many children of all abilities to play together. The risk seekers can stand on the middle platform securely, sensing the movement of the others. The spacious platform also allows for socialising, and children lying or

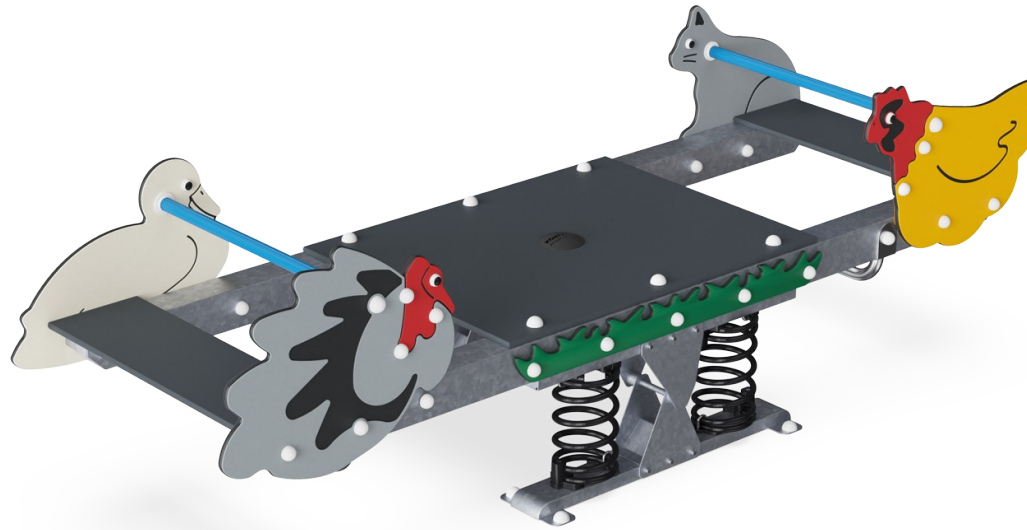
sitting. There is room enough for caregivers, too. The seats at the end are big enough for older children as well as adults. The fun thrill of rocking, individually, or in small or in big groups, will make children return for more. Rocking on the fairytale seesaw enhances the children's muscles and motor skills, their balance, and coordination. The spaciousness

of the seesaw supports the development of social-emotional skills, e.g. cooperation, consideration, and turn-taking. Toddlers experience cause-and-effect understanding.



Fairytale Seesaw

M176



Theme

Cognitive: suggests a theme and supports dramatic play, which stimulates language and communication skills.



Double seating option

Social-Emotional: rocking together supports cooperation skills, and physical contact with others is great for children's wellbeing, measurable in lower cortisol levels.



Rocking spring

Physical: response to movements adds to spatial awareness and sense of balance which are fundamental motor skills.
Cognitive: trains the understanding of cause and effect: when I move my body, the spring responds with movement.



Foot support

Physical: the footrest supports intensive rocking, which stimulates the senses of balance and space, fundamental for managing the world securely.



Handhold

Physical: opens more hold positions and ensures good grip, necessary for rocking intensely which trains hand and arm muscles.

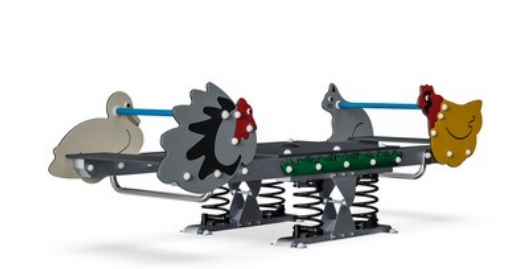


Center platform

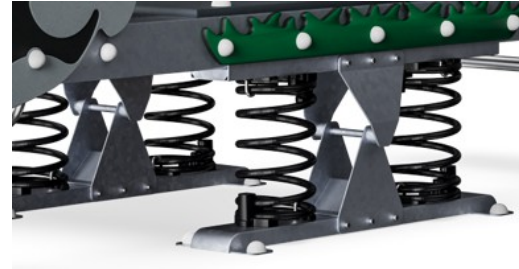
Physical: supports agility, balance and coordination, using leg and core muscles, building bone density when jumping. Facilitate sitting and lying, allows for users with disabilities. **Social-Emotional:** provides an inclusive space for gathering and for care givers assisting. Teamwork and socialising when rocking together.

Fairytale Seesaw

M176



Panels of 19mm EcoCore™. EcoCore™ is a highly durable, eco-friendly material, which is not only recyclable after use but also consists of a core produced from 100% recycled material.



KOMPAN's springs are manufactured from high-quality spring steel. The springs are cleaned by phosphating before being painted with epoxy primer and polyester powder coating. The springs are fixed by unique anti-pinch fittings for maximum safety and longevity.



The springs are fixed by unique anti-pinch fittings for maximum safety and longevity.



Handles are made of polypropylene PP with excellent impact strength and are suitable for extreme weather climates.



The steel surfaces are hot-dip galvanised inside and outside with lead-free zinc. The galvanisation has excellent corrosion resistance in outside environments and requires low maintenance.



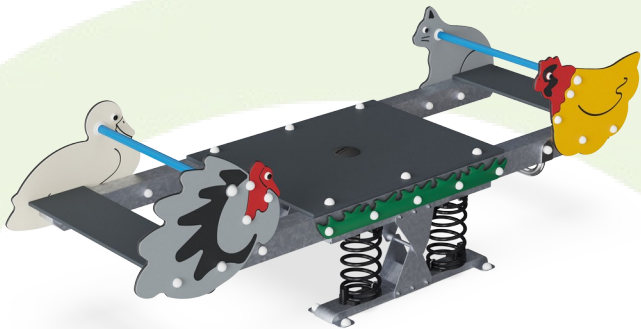
Platform and seats are made of HPL with a thickness of 17,8mm with a very high wearing strength and a unique KOMPAN non-skid surface texture.

Item no. M17601-01P	
Installation Information	
Max. fall height	100 cm
Safety surfacing area	18.0 m²
Total installation time	8.3
Excavation volume	0.15 m³
Concrete volume	0.00 m³
Footing depth (standard)	42 cm
Shipment weight	291 kg
Anchoring options	In-ground ✓ Surface ✓
Warranty Information	
EcoCore HDPE	Lifetime
Galvanised Steel	Lifetime
HPL Seat	15 years
Spare Parts Guarantee	10 years
Springs	5 years



Sustainability Data

M176



Cradle to Gate A1-A3	Total CO ₂ emission	CO ₂ e/kg	Recycled materials
	kg CO ₂ e	kg CO ₂ e/kg	%
M17601-01P	593.80	2.45	40.80

The overall framework applied for these factors is the Environmental Product Declaration (EPD), which quantifies "environmental information on the life cycle of a product and enable comparisons between products fulfilling the same function" (ISO, 2006). This follows the structure and applies a Life-Cycle Assessment approach to the entire Product stage from raw material through manufacturing (A1-A3))

Kompan A/S
C.F. Tietgens Boulevard 32C
DK-5220 Odense SØ
Denmark



Verification of CO₂ calculation of: Freestanding play equipment



Data version no. 2023-10-05

The CO₂ calculation and data are in compliance with the principles of a carbon footprint impact according to the GHG protocol (Greenhouse Gas Protocol), Scope 3, cradle to gate related to all individual components in the product category: "Freestanding play equipment" represented by item no.: GXY916012-3417.

(Scope 3 emissions include emission sources in the upstream and downstream value chain).

Date: 30. October 2023 | Valid until: 30. October 2025

Verified by:

A handwritten signature in blue ink, reading "Julie Marie Vejsgaard Larsen".

Julie Marie Vejsgaard Larsen, LCA & EPD Consultant

Verification based on report: Validation of CO₂ calculation of 9 categories of Kompan product line, version 1.0, prepared by: Bureau Veritas HSE, Denmark: Julie M. V. Larsen.

Publication date: 30. October 2023

By Bureau Veritas HSE
www.bureauveritas.dk
+45 7731 1000

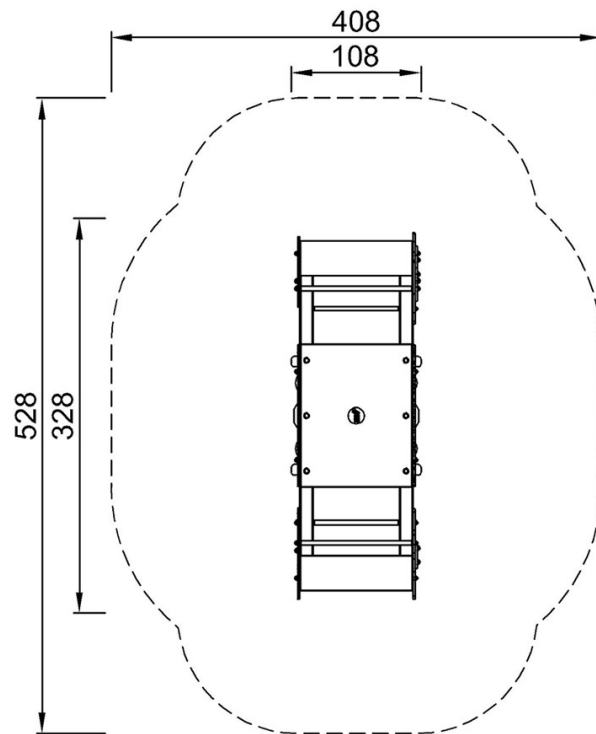


Fairytale Seesaw

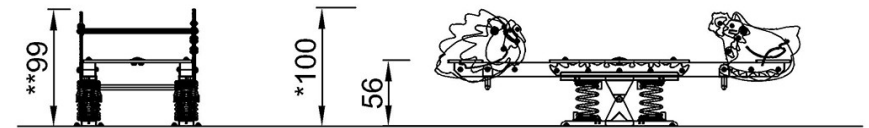
M176

* Max fall height | ** Total height | *** Safety surfacing area

* Max fall height | ** Total height



M17601P
*100cm
**99cm
***18m²



M17601

[Click to see TOP VIEW](#)

[Click to see SIDE VIEW](#)