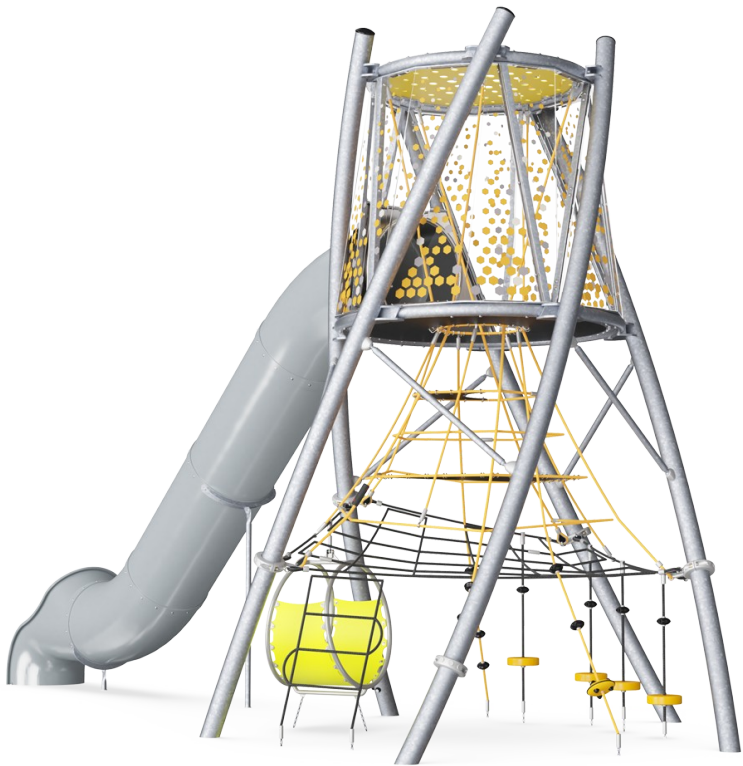


# SkyTwister, Physical

COR29900




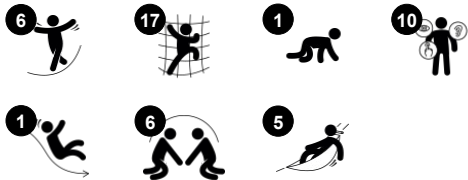
WOW! The SkyTwister Physical is an activity-packed, intriguing play magnet for children. The twisted frame contains a rich variety of climbing, swaying play that makes children want to come back again and again. At ground level, the swaying loop invites a break, and the many suspended ropes offer moving seats and complex climbs. Combined with the inclined horizontal net, the lower level of the Twisted

Tower offers an inviting, responsive meeting point for all. When swaying and climbing in the ropes and inclined nets of the SkyTwister, children develop their sense of balance and coordination. These crucial motor skills build the capability to move confidently and securely through the world. Additionally, climbing works all major muscle groups. On top of the Twisted Tower awaits a wildly fascinating destination: a

view and a meeting point on bouncy membrane flooring with fascinating optic see-through panels that change the way the world looks. The transparency of the Twisted Tower, from bottom to top, makes it a play unit for intense cooperation, consideration and communication across levels and activities - a place to make friends.



Item no. COR299001-0405	
General Product Information	
Dimensions LxWxH	18'1"x28'3"x16'6"
Age group	5 - 12
Play capacity (users)	30
Color options	



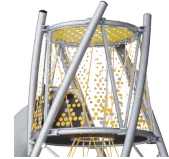
# SkyTwister, Physical

COR29900



## Tube slide

**Physical:** sliding develops spatial awareness and a sense of balance. Furthermore, the core muscles are trained when sitting upright going down. **Social-Emotional:** thrill when going down fast. Empathy stimulated by turn-taking.



## Twisted tower top

**Social-Emotional:** the soft, bouncy floored-meeting point placed up high adds a feeling of achievement to meeting friends here. The entry trains turn-taking skills and empathy.



## Hangout pod

**Physical:** sitting and lying enjoying the swaying movements stimulate the sense of balance. **Social-Emotional:** meeting, taking a break is invited. Turn-taking supports the skills necessary to learn how to avoid conflicts.



## Rope with rubber disc

**Physical:** children develop cross-body coordination and muscle strength when stepping onto the disc and climbing the rope. Their sense of balance is trained when swaying gently. The sense of balance is important for instance for being able to sit still. **Social-Emotional:** socializing and turn-taking when deciding who should sit here.



## Ufo

**Physical:** sense of balance when sitting, swaying. Arm and leg muscles develop when holding tight, climbing up.

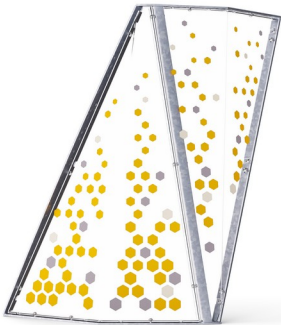


## Internal climbing net

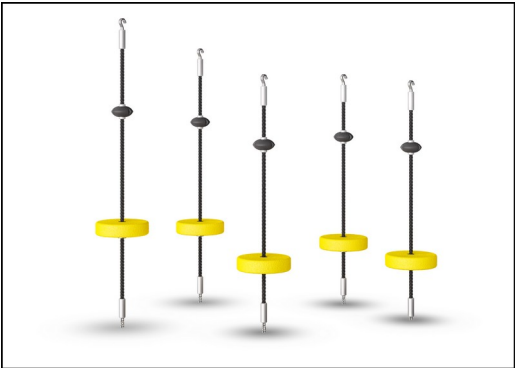
**Physical:** children develop cross-body coordination and muscle strength. The big meshes allow for climbing and crawling through, training proprioception and spatial awareness. **Social-Emotional:** the big meshes allow for more children to be together, sharing.

# SkyTwister, Physical

COR29900



The graphic panels are made of high-quality polycarbonate with a thickness of 6mm. The graphic print consist of an inner layer is the image and outer transparent layer which function as protection. Both PC panel and the water-based lacquer are UV stabilized to prevent fading of the print.

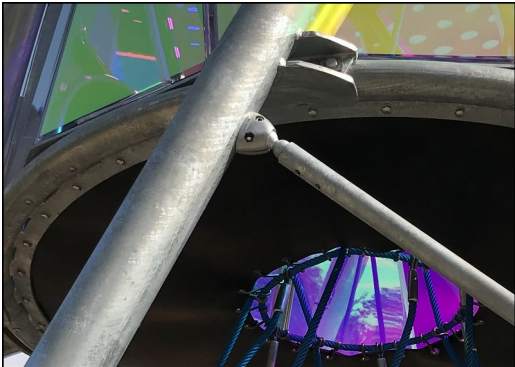


Fully colored EPDM rubber discs with smooth surface. The moulded EPDM surrounds a hot dip galvanized steel core that ensures both the stability of the discs and durable fixation to the rope.



Hangout pod designed with a welded frame of two steel rings which are hot dip galvanized and powder coated. The membrane consist of friction-proof rubberized material of conveyor belt quality with excellent UV resistance.

Item no. COR299001-0405	
Installation Information	
Max. fall height	8'0"
Safety surfacing area	718ft²
Total installation time	35.2
Excavation volume	12.56yd³
Concrete volume	4.45yd³
Footing depth (standard)	2'11"
Shipment weight	4068lbs
Anchoring options	In-ground ✓
Warranty Information	
Hot dip galvanized steel	Lifetime
Painted toplayer	10 Years
Ropes & nets	10 Years
Spare Parts Availability	10 Years
Stainless steel components	Lifetime



The steel surfaces are hot dip galvanized inside and outside with lead free zinc. The galvanization has excellent corrosion resistance in outside environments and requires low maintenance.



Curved and straight tunnel slide of either PE or stainless-steel material and supported by muliple steel rods to a center steel post. The tunnel slides are designed with perfect curve and inclination for a playful ride.



Corocord ropes with 19mm diameter or more are special 'Hercules' - type with galvanized six-stranded steel wires. Each strand is tightly wrapped with PES yarn, which is melted onto each individual strand. The ropes are highly wear-and vandalism-resistant and can be replaced at site if needed.

Elevated activities 2	Accessible elevated activities	Accessible ground level activities	Accessible ground level play types
Present	0	1	1
Required	1	1	1





# Sustainability Data

COR29900



Cradle to Gate A1-A3	Total CO <sub>2</sub> emission	CO <sub>2</sub> e/kg	Recycled materials
	kg CO <sub>2</sub> e	kg CO <sub>2</sub> e/kg	%
COR299001-0405	4,385.90	2.96	42.30

The overall framework applied for these factors is the Environmental Product Declaration (EPD), which quantifies "environmental information on the life cycle of a product and enable comparisons between products fulfilling the same function" (ISO, 2006). This follows the structure and applies a Life-Cycle Assessment approach to the entire Product stage from raw material through manufacturing (A1-A3))

Kompan A/S  
C.F. Tietgens Boulevard 32C  
DK-5220 Odense SØ  
Denmark



## Verification of CO<sub>2</sub> calculation of: Corocord



Data version no. 2023-10-05

The CO<sub>2</sub> calculation and data are in compliance with the principles of a carbon footprint impact according to the GHG protocol (Greenhouse Gas Protocol), Scope 3, cradle to gate related to all individual components in the product category: "Corocord" represented by item no.: COR314011-1101.

(Scope 3 emissions include emission sources in the upstream and downstream value chain).

Date: 30. October 2023 | Valid until: 30. October 2025  
Verified by:

Julie Marie Vejsgaard Larsen, LCA & EPD Consultant

Verification based on report: Validation of CO<sub>2</sub> calculation of 9 categories of Kompan product line, version 1.0, prepared by: Bureau Veritas HSE, Denmark: Julie M. V. Larsen.

Publication date: 30. October 2023

By Bureau Veritas HSE  
www.bureauveritas.dk  
+45 7731 1000

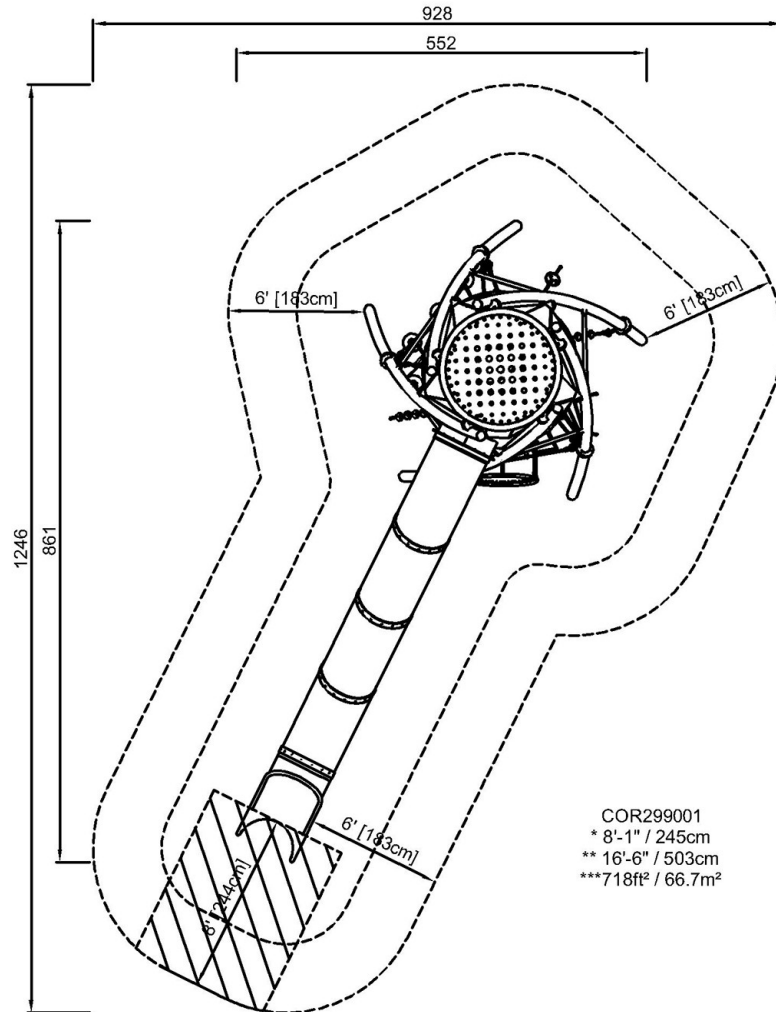


# SkyTwister, Physical

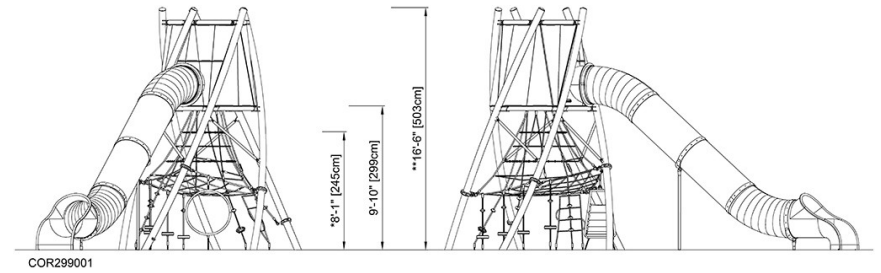
COR29900

\* Max fall height | \*\* Total height | \*\*\* Safety surfacing area

\* Max fall height | \*\* Total height



[Click to see TOP VIEW](#)



[Click to see SIDE VIEW](#)