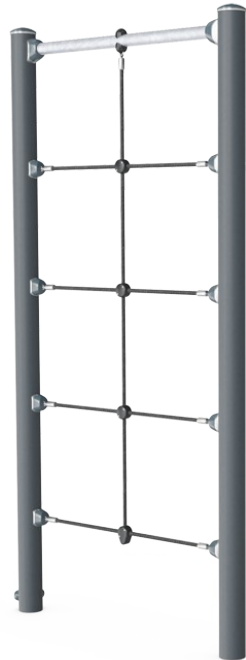


# Multi net

FPW207



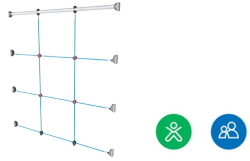
A climbing structure with an overhead pull up bar that offers support for varying the difficulty levels of own bodyweight exercises. The Multi Net is perfect as a training tool preparing for climbing movements in obstacle and survival runs.

|                             |               |
|-----------------------------|---------------|
| Item no. FPW20700-0900      |               |
| General Product Information |               |
| Dimensions LxWxH            | 120x11x240 cm |
| Age group                   | 8+            |
| Play capacity (users)       | 1             |
| Colour options              | ●             |



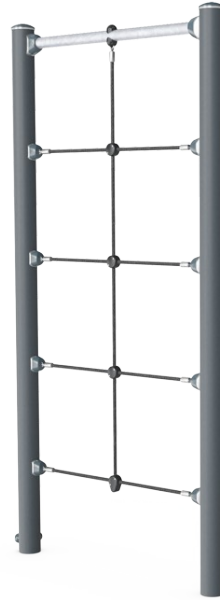
# Multi net

FPW207



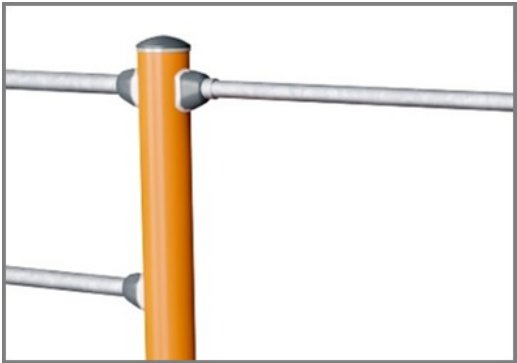
## Climbing net

**Physical:** children develop cross-body coordination and muscle strength when climbing. The big meshes allow for climbing and crawling through, supporting proprioception and spatial awareness. **Social-Emotional:** the big meshes allow for more children to sit together and talk.



# Multi net

FPW207



Post are made of Ø101.6 x 2mm, pre-galvanized carbon steel and powder coated, a great protection to all conditions.



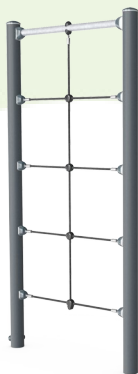
Ropes of UV-stabilized PES rope strands with inner steel cable reinforcement. The polyester yarn is made of +95% Post-consumer materials and is inductively melted onto each strand to obtain excellent wear and tear resistance.

|                          |                          |
|--------------------------|--------------------------|
| Item no. FPW20700-0900   |                          |
| Installation Information |                          |
| Max. fall height         | 233 cm                   |
| Safety surfacing area    | 19.1 m²                  |
| Total installation time  | 3.2                      |
| Excavation volume        | 0.35 m³                  |
| Concrete volume          | 0.19 m³                  |
| Footing depth (standard) | 90 cm                    |
| Shipment weight          | 72 kg                    |
| Anchoring options        | In-ground ✓<br>Surface ✓ |
| Warranty Information     |                          |
| Corocord rope            | 10 years                 |
| Galvanised/painted metal | 10 years                 |
| Spare parts guaranteed   | 10 years                 |



# Sustainability Data

FPW207



| Cradle to Gate A1-A3 | Total CO <sub>2</sub> emission | CO <sub>2</sub> e/kg    | Recycled materials |
|----------------------|--------------------------------|-------------------------|--------------------|
|                      | kg CO <sub>2</sub> e           | kg CO <sub>2</sub> e/kg | %                  |
| FPW20700-0900        | 165.00                         | 3.84                    | 47.20              |

The overall framework applied for these factors is the Environmental Product Declaration (EPD), which quantifies "environmental information on the life cycle of a product and enable comparisons between products fulfilling the same function" (ISO, 2006). This follows the structure and applies a Life-Cycle Assessment approach to the entire Product stage from raw material through manufacturing (A1-A3))

**Kompan A/S**  
C.F. Tietgens Boulevard 32C  
DK-5220 Odense SØ  
Denmark



### Verification of CO<sub>2</sub> calculation of: Fitness



Data version no. 2023-10-05

The CO<sub>2</sub> calculation and data are in compliance with the principles of a carbon footprint impact according to the GHG protocol (Greenhouse Gas Protocol), Scope 3, cradle to gate related to all individual components in the product category: "Fitness" represented by item no.: FAZ10100-0900.

(Scope 3 emissions include emission sources in the upstream and downstream value chain).

**Date: 30. October 2023 | Valid until: 30. October 2025**  
**Verified by:**

Julie Marie Vejsgaard Larsen, LCA & EPD Consultant

Verification based on report: Validation of CO<sub>2</sub> calculation of 9 categories of Kompan product line, version 1.0, prepared by: Bureau Veritas HSE, Denmark: Julie M. V. Larsen.

**Publication date: 30. October 2023**

**By Bureau Veritas HSE**  
www.bureauveritas.dk  
+45 7731 1000

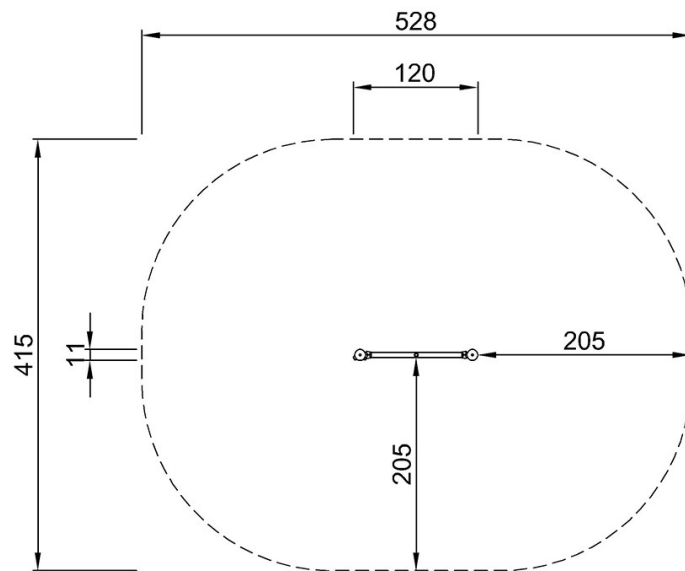


# Multi net

FPW207

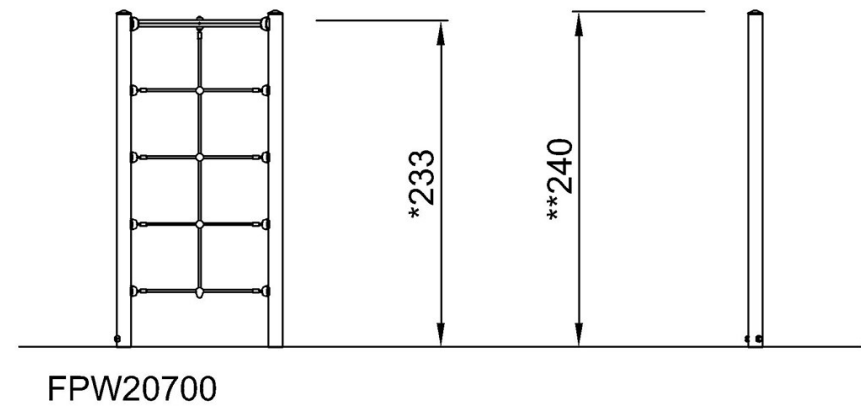
\* Max fall height | \*\* Total height | \*\*\* Safety surfacing area

\* Max fall height | \*\* Total height



FPW20700  
\*233cm  
\*\*240cm  
\*\*\*19.1m<sup>2</sup>

[Click to see TOP VIEW](#)



FPW20700

[Click to see SIDE VIEW](#)