
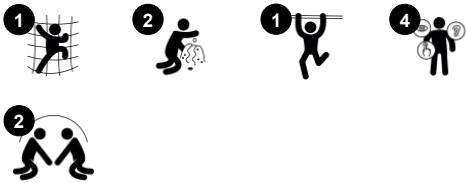


Cloud Climber

MSC5401



Item no. MSC540100-3417P	
General Product Information	
Dimensions LxWxH	165x76x125 cm
Age group	1+
Play capacity (users)	2
Colour options	



With its cute design, the Cloud Climber attracts the active toddler as they try to reach for the clouds, developing their emerging physical skills. Younger children will enjoy pulling themselves up and cruising around the structure to play with their parents and friends, taking a short rest when needed at the yellow seat in between. Older toddlers will be able to

test their climbing skills as they try to climb higher to the clouds. Climbing supports gross motor development and cross-coordination, which is important in the development of reading skills, as these depend on cross-modal perception. The structure is loaded with the kind of play that keeps toddlers occupied – lots of things to touch and move, and a transparent

design that supports social play.



Cloud Climber

MSC5401



Climbing net

Physical: children develop cross-body coordination and muscle strength when climbing. The big mesh supports proprioception and spatial awareness. **Social-Emotional:** the big meshes allow for more children to sit together and talk.

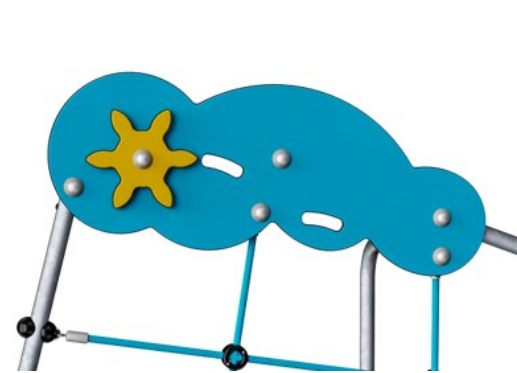


Table

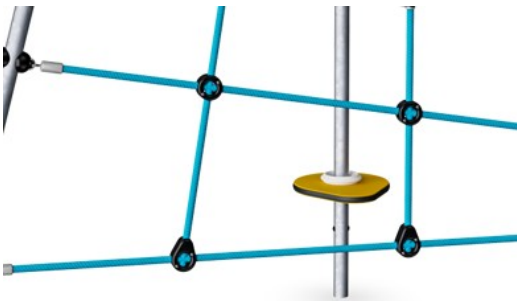
Social-Emotional: great meeting place and a space creator. Sharing and cooperation to create a social scenario that supports communication and cooperation.

Cloud Climber

MSC5401



Panels of 19mm EcoCore™. EcoCore™ is a highly durable, eco-friendly material, which is not only recyclable after use but also consists of a core produced from 100% recycled material.



Climbing nets are made of UV-stabilised PP rope with inner steel cable reinforcement. The rope is induction treated to obtain maximum fixation between steel and rope, which provides excellent wear and tear resistance. All rope connectors are made of 100% recyclable PA material.



The steel support posts are hot-dip galvanised inside and outside with lead free zinc. The galvanisation has excellent corrosion resistance in outside environments and requires low maintenance.

Item no. MSC540100-3417P	
Installation Information	
Max. fall height	72 cm
Safety surfacing area	13.5 m²
Total installation time	3.2
Excavation volume	0.13 m³
Concrete volume	0.00 m³
Footing depth (standard)	60 cm
Shipment weight	28 kg
Anchoring options	In-ground ✓ Surface ✓
Warranty Information	
EcoCore HDPE	Lifetime
Galvanised Steel	Lifetime
Movable Parts	2 years
Spare Parts Guarantee	10 years



Sustainability Data

MSC5401



Cradle to Gate A1-A3	Total CO ₂ emission	CO ₂ e/kg	Recycled materials
	kg CO ₂ e	kg CO ₂ e/kg	%
MSC540100-3417P	74.20	2.97	52.50

The overall framework applied for these factors is the Environmental Product Declaration (EPD), which quantifies "environmental information on the life cycle of a product and enable comparisons between products fulfilling the same function" (ISO, 2006). This follows the structure and applies a Life-Cycle Assessment approach to the entire Product stage from raw material through manufacturing (A1-A3))

Kompan A/S
C.F. Tietgens Boulevard 32C
DK-5220 Odense SØ
Denmark



Verification of CO₂ calculation of: Themed play systems



Data version no. 2023-10-05

The CO₂ calculation and data are in compliance with the principles of a carbon footprint impact according to the GHG protocol (Greenhouse Gas Protocol), Scope 3, cradle to gate related to all individual components in the product category: "Themed play systems" represented by item no.: MSC641100-3717P.

(Scope 3 emissions include emission sources in the upstream and downstream value chain).

Date: 30. October 2023 | Valid until: 30. October 2025
Verified by:

Julie Marie Vejsgaard Larsen, LCA & EPD Consultant

Verification based on report: Validation of CO₂ calculation of 9 categories of Kompan product line, version 1.0, prepared by: Bureau Veritas HSE, Denmark: Julie M. V. Larsen.

Publication date: 30. October 2023

By Bureau Veritas HSE
www.bureauveritas.dk
+45 7731 1000

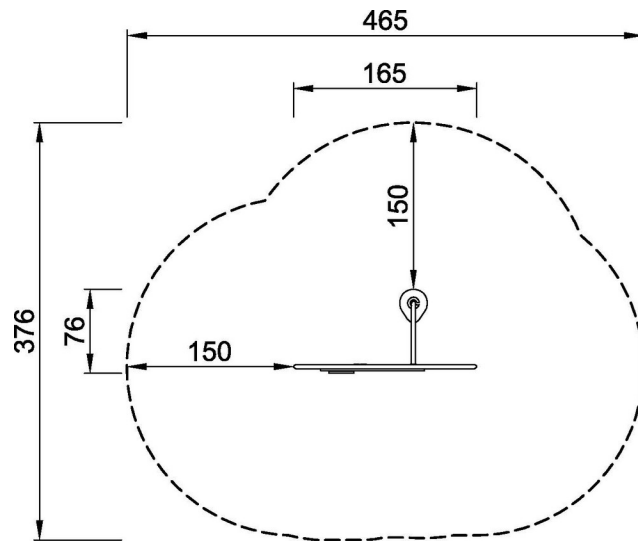


Cloud Climber

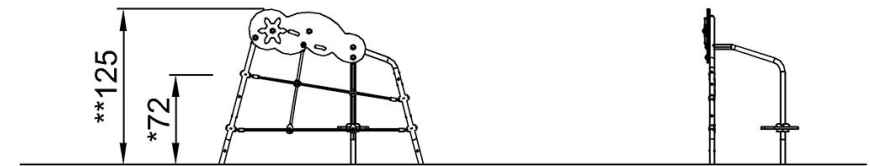
MSC5401

* Max fall height | ** Total height | *** Safety surfacing area

* Max fall height | ** Total height



MSC540100P
*72cm
**125cm
***13.5m²



MSC540100P

[Click to see TOP VIEW](#)

[Click to see SIDE VIEW](#)