

Horse, Double


PCM106

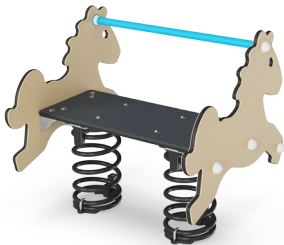


Rocking on the Double Horse is an attractive playground activity. Children can control the play by moving their bodies to make the horse rock. They will feel delighted to have the horse respond to their movements. The two sides support the seated position, and the foot and handholds provide a stable point to stem feet and hands from, to create the movement.

There is room enough for two children on the Double Horse, this creates positive social relations. Rocking on the Double Horse is also good for physical and cognitive development. When children begin to learn the connections between their bodies and their movements, they begin to make cognitive connections to a range of body movements and sensations. The

horse theme will inspire children's imagination and will encourage wonderful physical and imaginative play.

Item no. PCM106-0401	
General Product Information	
Dimensions LxWxH	75x72x72 cm
Age group	2+
Play capacity (users)	2
Colour options	



Horse, Double

PCM106



Handhold

Physical: opens more hold positions and ensures good grip, necessary for rocking intensely which trains hand and arm muscles.



Foot support

Physical: the footrest supports intensive rocking, which stimulates the senses of balance and space, fundamental for managing the world securely.



Rocking spring

Physical: response to movements adds to spatial awareness and sense of balance which are fundamental motor skills.
Cognitive: trains the understanding of cause and effect: when I move my body, the spring responds with movement.



Theme

Cognitive: suggests a theme and supports dramatic play, which stimulates language and communication skills.

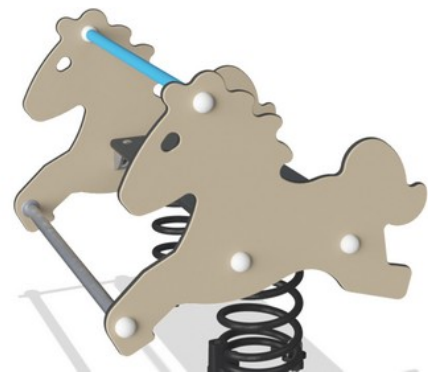


Double seating option

Social-Emotional: rocking together supports cooperation skills, and physical contact with others is great for children's wellbeing, measurable in lower cortisol levels.

Horse, Double

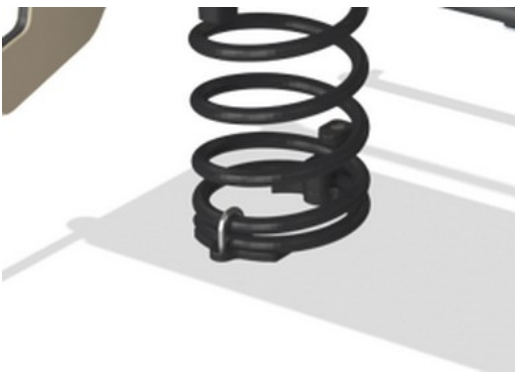
PCM106



Panels of 19mm EcoCore™. EcoCore™ is a highly durable, eco-friendly material, which is not only recyclable after use but also consists of a core produced from 100% recycled material.



KOMPAN's springs are manufactured from high-quality spring steel. The springs are cleaned by phosphating before being painted with epoxy primer and polyester powder coating. The springs are fixed by unique anti-pinch fittings for maximum safety and longevity.



The springs are fixed by unique anti-pinch fittings for maximum safety and longevity.



The handle is made of polypropylene PP, which has excellent impact strength and is suitable for hot climates.



Seat is made of HPL with a thickness of 17.8mm with a very high wearing strength and a unique KOMPAN nonskid surface texture.

Item no. PCM106-0401	
Installation Information	
Max. fall height	40 cm
Safety surfacing area	8.7 m²
Total installation time	2.8
Excavation volume	0.27 m³
Concrete volume	0.00 m³
Footing depth (standard)	42 cm
Shipment weight	55 kg
Anchoring options	In-ground ✓ Surface ✓
Warranty Information	
EcoCore HDPE	Lifetime
Spare Parts Guarantee	10 years
Springs	5 years



Sustainability Data

PCM106



Cradle to Gate A1-A3	Total CO ₂ emission	CO ₂ e/kg	Recycled materials
	kg CO ₂ e	kg CO ₂ e/kg	%
PCM106-0401	121.10	2.32	40.60

The overall framework applied for these factors is the Environmental Product Declaration (EPD), which quantifies "environmental information on the life cycle of a product and enable comparisons between products fulfilling the same function" (ISO, 2006). This follows the structure and applies a Life-Cycle Assessment approach to the entire Product stage from raw material through manufacturing (A1-A3))

Kompan A/S
C.F. Tietgens Boulevard 32C
DK-5220 Odense SØ
Denmark



Verification of CO₂ calculation of: Freestanding play equipment



Data version no. 2023-10-05

The CO₂ calculation and data are in compliance with the principles of a carbon footprint impact according to the GHG protocol (Greenhouse Gas Protocol), Scope 3, cradle to gate related to all individual components in the product category: "Freestanding play equipment" represented by item no.: GXY916012-3417.

(Scope 3 emissions include emission sources in the upstream and downstream value chain).

Date: 30. October 2023 | Valid until: 30. October 2025
Verified by:

Julie Marie Vejsgaard Larsen, LCA & EPD Consultant

Verification based on report: Validation of CO₂ calculation of 9 categories of Kompan product line, version 1.0, prepared by: Bureau Veritas HSE, Denmark: Julie M. V. Larsen.

Publication date: 30. October 2023

By Bureau Veritas HSE
www.bureauveritas.dk
+45 7731 1000

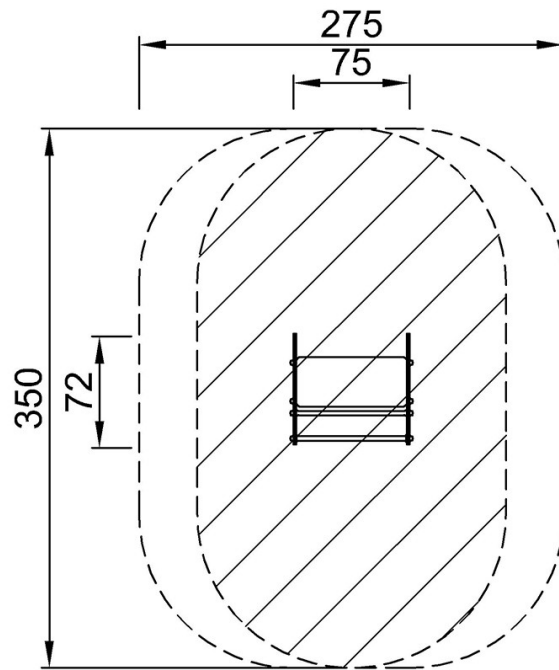


Horse, Double

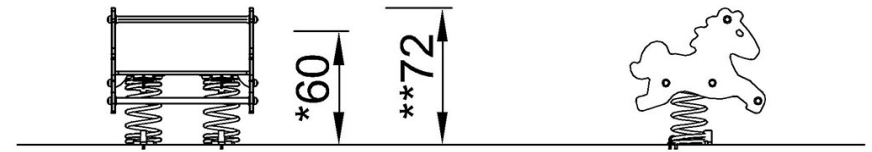
PCM106

* Max fall height | ** Total height | *** Safety surfacing area

* Max fall height | ** Total height



PCM106
*40cm
**72cm
*** 8.7m²



PCM106

[Click to see TOP VIEW](#)

[Click to see SIDE VIEW](#)