

# Orient Express

M241



Children will delight in a ride on the Orient Express. This playful unit supports social-emotional and physical skills in young children. The intentional design encourages children to stay and play, which provides great fun and developmental benefits. In addition to being a place to sit alone or with friends, the Orient Express spurs stories about train rides,

supporting language skills and story-telling. Sitting with friends stimulates social-emotional development and friendship skills. The small holes invite exploration and provide children with opportunities to play peek-a-boo and other games. Young children will also enjoy moving around the train, and for younger children, pulling themselves up to stand will support

physical development.

Item no. M24170-3218P	
General Product Information	
Dimensions LxWxH	122x72x93 cm
Age group	6m+
Play capacity (users)	4
Colour options	●



# Orient Express

M241



## Theme

**Cognitive:** suggests a theme and supports dramatic play, which stimulates language and communication skills.



## Bench

**Social-Emotional:** gathering, cooperating or taking a break from play - all train social skills.

# Orient Express

M241



Panels of 19mm EcoCore™. EcoCore™ is a highly durable, eco-friendly material, which is not only recyclable after use but also consists of a core produced from 100% recycled material.

The seating area is made of HPL with a thickness of 17.8 mm. KOMPAN HPL has high wearing strength to ensure longevity in all climates.

Item no. M24170-3218P	
Installation Information	
Max. fall height	35 cm
Safety surfacing area	13.6 m²
Total installation time	3.6
Excavation volume	0.13 m³
Concrete volume	0.00 m³
Footing depth (standard)	32 cm
Shipment weight	103 kg
Anchoring options	In-ground ✓ Surface ✓
Warranty Information	
EcoCore HDPE	Lifetime
HPL Seat	15 years
Spare Parts Guarantee	10 years



# Sustainability Data

M241

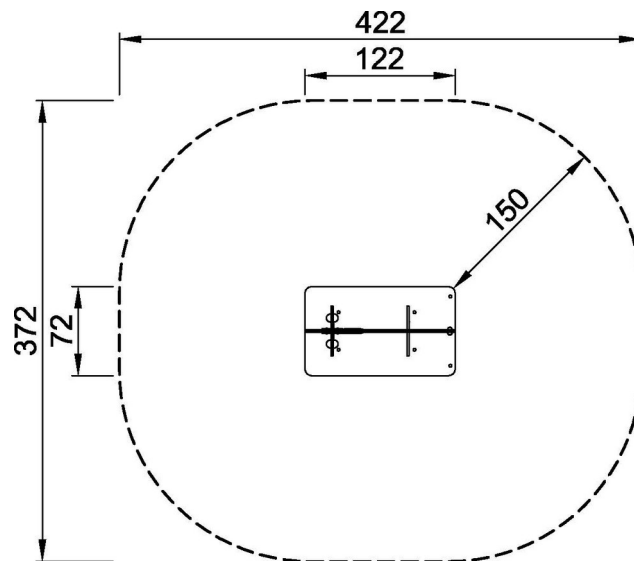


Cradle to Gate A1-A3	Total CO <sub>2</sub> emission	CO <sub>2</sub> e/kg	Recycled materials
	kg CO <sub>2</sub> e	kg CO <sub>2</sub> e/kg	%
M24170-3218P	93.80	1.66	48.80

The overall framework applied for these factors is the Environmental Product Declaration (EPD), which quantifies "environmental information on the life cycle of a product and enable comparisons between products fulfilling the same function" (ISO, 2006). This follows the structure and applies a Life-Cycle Assessment approach to the entire Product stage from raw material through manufacturing (A1-A3))

\* Max fall height | \*\* Total height | \*\*\* Safety surfacing area

\* Max fall height | \*\* Total height



M24170P-xx18  
\*35cm  
\*\*93cm  
\*\*\*13.6m<sup>2</sup>



M24170P  
1:100

[Click to see TOP VIEW](#)

[Click to see SIDE VIEW](#)