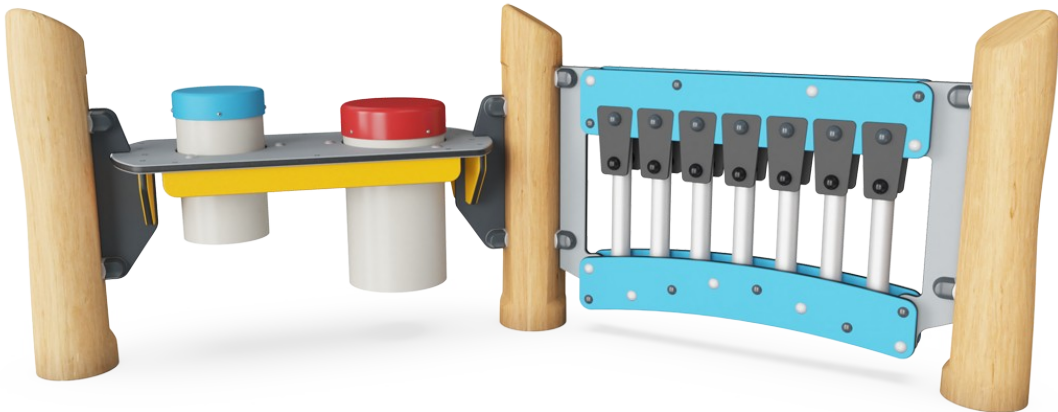



# Play Panel 2 - Music

NRO613



Item no. NRO613-1001	
General Product Information	
Dimensions LxWxH	209x97x83 cm
Age group	1+
Play capacity (users)	6
Colour options	



The Music Play Panel 2 attracts children immensely with its colorful combinations of rhythm, sounds and tones. They will come back again and again to be part of creative play, on their own or with friends and teachers. The music pipes offer sensory variations with a tonal sound outcome. Children train the hand-eye coordination which is crucial to control of

movement and e.g. handwriting. The black rubber flaps can be plunked, or pipes beaten and tunes created. This trains logical as well as creative thinking and invites cooperation and social play. The Percussion Panel is an immense play invitation for children: The drums can be played alone or together. There is room for many users to congregate around them.

This encourages social interaction and co-creation when drumming rhythms and singing along. It also stimulates cognition and creativity as children create rules and rhythms together or individually.



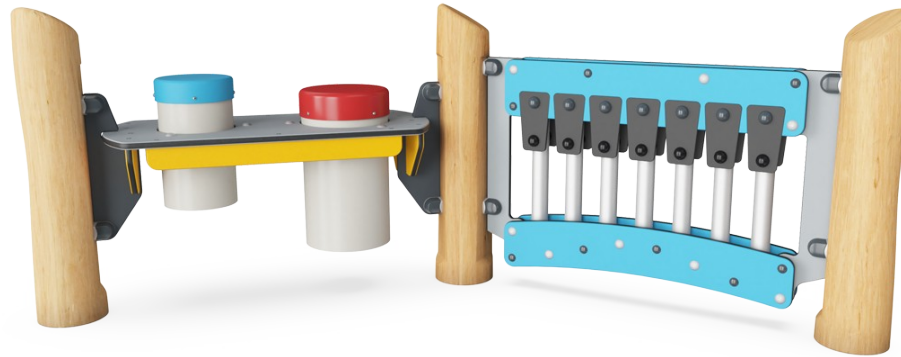
# Play Panel 2 - Music

NRO613



## Music tubes

**Social-Emotional:** invite social interaction and co-creation for more children, on both sides. **Cognitive:** understanding of cause and effect when striking tubes. **Creative:** the creation of different intensity and tonality stimulates creative skills.



## Two sides

**Social-Emotional:** invites cooperation and communication. The low height and the transparency of the panel makes interaction possible between the two sides.



## Rubber flaps

**Social-Emotional:** the two rows of flaps invite cooperation and co-creation. **Cognitive:** cause and effect understanding when discovering sound from flaps hitting tubes.



## Tonality

**Cognitive:** creative thinking when combining tones into tunes. **Creative:** composing new tonal combinations stimulates creativity.



## Drums

**Social-Emotional:** cooperation and co-creation, parallel and group play. **Cognitive:** cause and effect understanding when creating sounds, supporting a sense of rhythm, that is essential for pre-reading skills. **Creative:** creating and leaving a mark with sound.

# Play Panel 2 - Music

NRO613



All Organic Robinia products by KOMPAN are made of Robinia wood from sustainable European sources. On request it can be supplied as FSC® Certified (FSC® C004450).



The Robinia wood can be supplied as untreated raw wood or painted with a brown coloured transparent pigment that maintains the golden wood colour of the wood.



There are Multiple footing options for all products: Surface anchoring with steel footings and expansion bolts. Wood in-ground or steel in-ground footings.

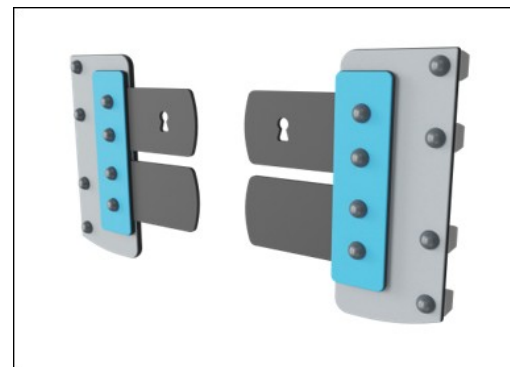
Item no. NRO613-1001	
Installation Information	
Max. fall height	0 cm
Safety surfacing area	14.9 m²
Total installation time	4.8
Excavation volume	0.38 m³
Concrete volume	0.00 m³
Footing depth (standard)	100 cm
Shipment weight	165 kg
Anchoring options	In-ground ✓ Surface ✓
Warranty Information	
Robinia wood	15 years
EcoCore HDPE	Lifetime
Hot dip galvanised steel	Lifetime
Movable parts	2 years
Spare parts guaranteed	10 years



Panels of 19mm EcoCore™. EcoCore™ is a highly durable, eco friendly material, which is not only recyclable after use, but also consists of material produced from +95% recycled post consumer material from food packing waste.



The Xylophone music panel consist of HDPE material in 19mm EcoCore™. The pipes are made of die cast aluminum specifically alloyed for outdoor environments. The percussion panel consist of 2 Conga Drums with PP tubes and top in colored ABS.



Membranes consist of friction-proof rubberized material of conveyor belt quality with excellent UV resistance. Embedded is a four-layered armouring made of woven polyester. The armouring and the two surface layers result in a total thickness of 9 mm.



# Sustainability Data

NRO613



Cradle to Gate A1-A3	Total CO <sub>2</sub> emission	CO <sub>2</sub> e/kg	Recycled materials
	kg CO <sub>2</sub> e	kg CO <sub>2</sub> e/kg	%
NRO613-1001	90.00	0.72	15.60

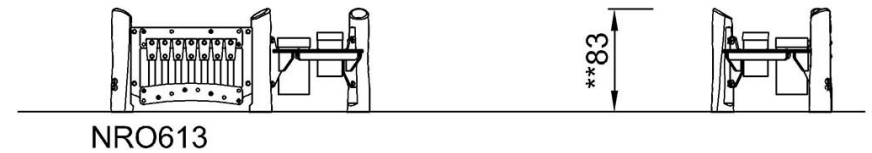
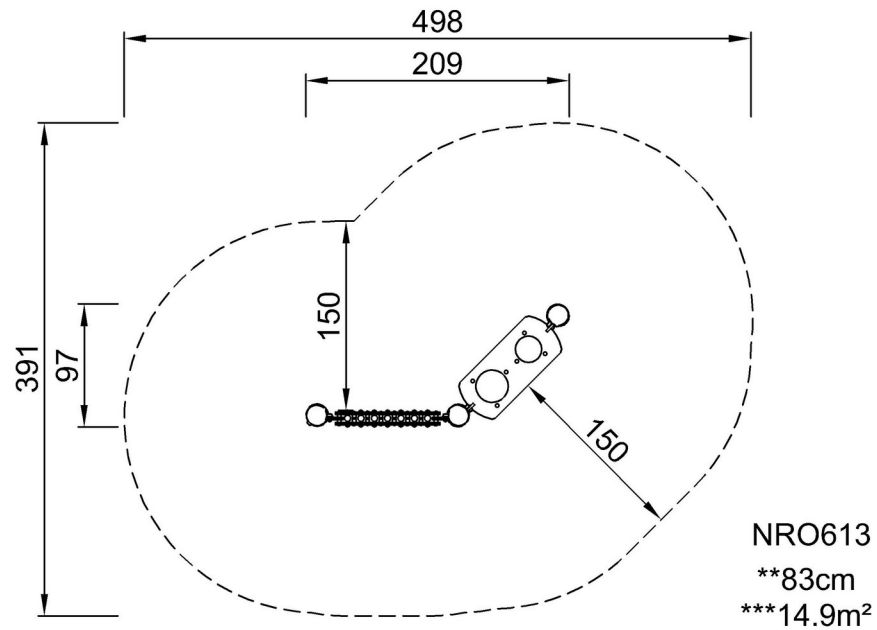
The overall framework applied for these factors is the Environmental Product Declaration (EPD), which quantifies "environmental information on the life cycle of a product and enable comparisons between products fulfilling the same function" (ISO, 2006). This follows the structure and applies a Life-Cycle Assessment approach to the entire Product stage from raw material through manufacturing (A1-A3))

# Play Panel 2 - Music

NRO613

\* Max fall height | \*\* Total height | \*\*\* Safety surfacing area

\* Max fall height | \*\* Total height



[Click to see TOP VIEW](#)

[Click to see SIDE VIEW](#)