

MUGA, 13 x 21m, Low 1m, Steel


FRE600601

KOMPAN
Let's play



The distance between the vertical tubes is small enough to keep small balls, such as field hockey balls, inside the pitch at all times. By embedding the tubes into the steel frame we have created an extremely vandalism proof structure that can be placed in any community. This transparent design makes it easy to follow the game for spectators. The 3 m x 2 m Multi

Goal follows the goal size of FIFA Futsal and IHF Handball regulations. The basketball hoop is placed at the official NBA height of 305 cm, and has the official NBA size of 46 cm in diameter.

| | |
|-----------------------------|---|
| Item no. FRE600601-0905 | |
| General Product Information | |
| Dimensions LxWxH | 2123x1367x369 cm |
| Age group | 3+ |
| Play capacity (users) | - |
| Colour options |  |



MUGA, 13 x 21m, Low 1m, Steel

FRE600601



The Ø21.3 mm x 2 mm tubes are embedded in the steel panel which avoids cracks and prevents the tubes from protruding out of the steel frame; making it a robust and vandalism proof solution.



All steel components are manufactured from high-quality carbon steel and are hot-dip galvanised (HDG).



The posts are made of 80 x 80 x 3mm profile with horizontally, 6mm welded flanges. This will enable easy installation and strong construction. The low-density polyethylene post caps are attached with blind rivets.

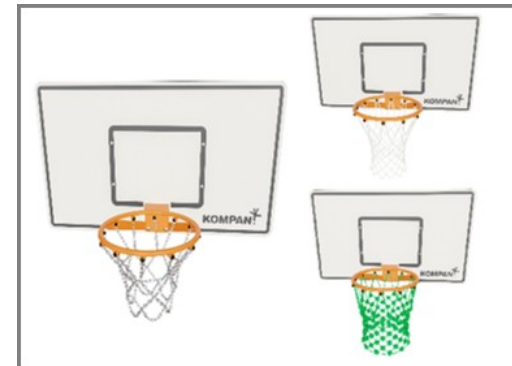
| Item no. FRE600601-0905 | |
|--------------------------|--------------------------|
| Installation Information | |
| Max. fall height | 0 cm |
| Safety surfacing area | 0.0 m² |
| Total installation time | 39.2 |
| Excavation volume | 2.59 m³ |
| Concrete volume | 2.27 m³ |
| Footing depth (standard) | 85 cm |
| Shipment weight | 2,255 kg |
| Anchoring options | In-ground ✓ Surface ✓ |
| Warranty Information | |
| EcoCore HDPE | Lifetime |
| HDG Post | Lifetime |
| Spare Parts Guarantee | 10 years |



Each panel has 4 Thermoplastic Vulcanizates plugs connecting the panels to the posts. The plugs reduce the vibration and therefore reduce the noise level. The plugs will also simplify installation as they come with pre-assembled nuts.



The hinges on the entrance gate are 16mm and made of Stainless Steel. The handles can be accessed from either side of the pitch.

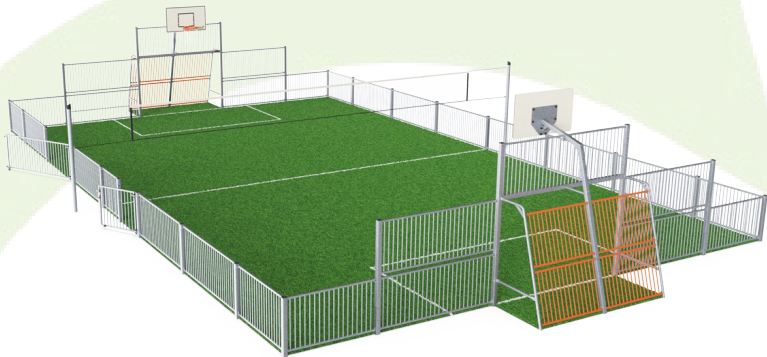


Choices of nets include; polyamide (PA), PA reinforced with steel wire, or stainless steel chains.



Sustainability Data

FRE600601



| Cradle to Gate A1-A3 | Total CO ₂ emission | CO ₂ e/kg | Recycled materials |
|----------------------|--------------------------------|-------------------------|--------------------|
| | kg CO ₂ e | kg CO ₂ e/kg | % |
| FRE600601-0905 | 5,078.30 | 2.55 | 50.60 |

The overall framework applied for these factors is the Environmental Product Declaration (EPD), which quantifies "environmental information on the life cycle of a product and enable comparisons between products fulfilling the same function" (ISO, 2006). This follows the structure and applies a Life-Cycle Assessment approach to the entire Product stage from raw material through manufacturing (A1-A3))

Verification of CO₂ calculation of: Sport



Data version no. 2023-10-05

The CO₂ calculation and data are in compliance with the principles of a carbon footprint impact according to the GHG protocol (Greenhouse Gas Protocol), Scope 3, cradle to gate related to all individual components in the product category: "Sport" represented by item no.: FRE600202-0901.

(Scope 3 emissions include emission sources in the upstream and downstream value chain).

Date: 30. October 2023 | Valid until: 30. October 2025

Verified by:

Julie Marie Vejsgaard Larsen, LCA & EPD Consultant

Verification based on report: Validation of CO₂ calculation of 9 categories of Kompan product line, version 1.0, prepared by: Bureau Veritas HSE, Denmark: Julie M. V. Larsen.

Publication date: 30. October 2023



By Bureau Veritas HSE
www.bureauveritas.dk
+45 7731 1000

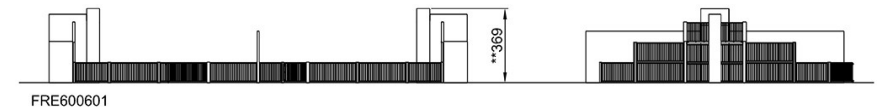
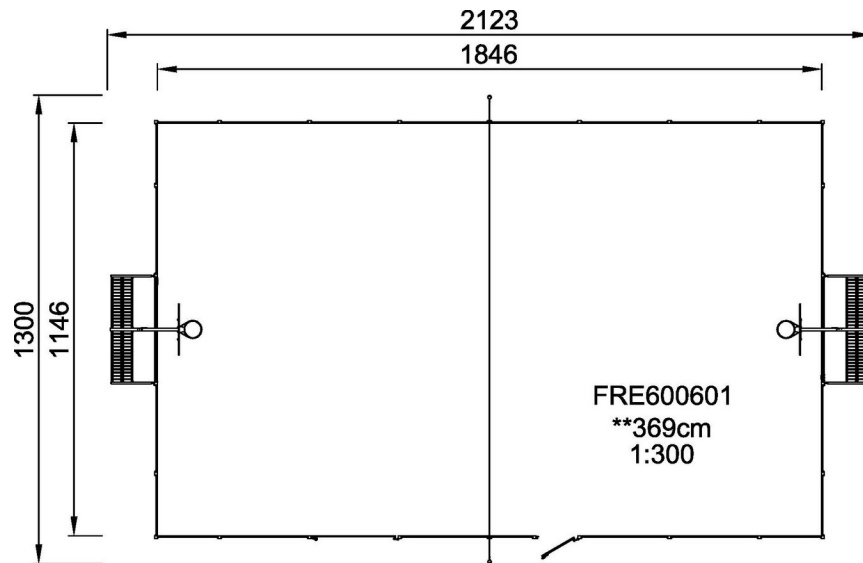


MUGA, 13 x 21m, Low 1m, Steel

FRE600601

* Max fall height | ** Total height | *** Safety surfacing area

* Max fall height | ** Total height



[Click to see TOP VIEW](#)

[Click to see SIDE VIEW](#)