

Fronton Cosmos 3 M

FRE2210

KOMPANI
Let's play



Les buts Cosmos sont équipés en standard de barres d'acier pour offrir une durabilité élevée en milieu urbain.

| Référence FRE2210-3317 | |
|--------------------------------|----------------|
| Informations générales | |
| Dimensions LxPxH | 264x322x370 cm |
| Age minimum | 3+ |
| Capacité idéale (utilisateurs) | - |
| Options de couleurs | ● |

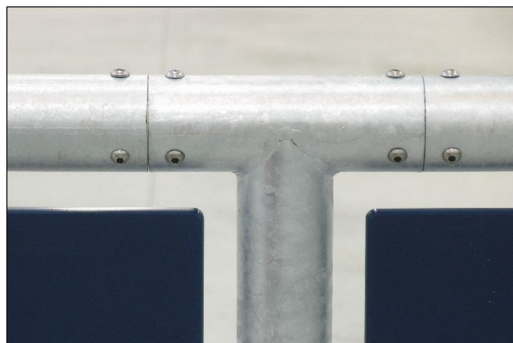


Fronton Cosmos 3 M

FRE2210



The goal measures ~140cm in depth and ~330cm in width with all posts made of galvanized steel with a hot dip galvanized surface treatment. The front frame is made with Ø48 tubing, and the backside of the goal uses 10 tubes with a diameter of ø38.



All steel components are manufactured from carbon steel, welding's according EN ISO 5817 & Hot dip galvanised (HDG) according to ISO1461. This process ensures good protection in all circumstances.



The HDPE panels are made with +95% recycled post-consumer material from e.g., food packing waste. Available in Night Sky Blue, but multiple colours can be requested. To increase the play value, you can also request HDPE panels with patterns or logos engraved.



The basketball hoop is made from hot dipped galvanized steel with a powder coated finish and a backboard made from +95% PCR HDPE. The net is made from 100% nylon, with a circumference of ~Ø30cm at the bottom and ~Ø50cm at the top. The net can also be supplied with steel reinforced PA net or steel chains.

Référence FRE2210-3317

Installation

| | |
|----------------------------|-------------------------------|
| Hauteur de Chute Max. | 0 cm |
| Zone de sécurité | 0,0 m² |
| Temps total d'installation | 8,9 |
| Volume d'excavation | 0,35 m³ |
| Volume de béton | 0,34 m³ |
| Profondeur ancrage | 50 cm |
| Poids d'expédition | 491 kg |
| Options d'ancrage | A enterrer ✓ A cheviller ✓ |

Garantie

| | |
|--------------------------------|---------------|
| EcoCore HDPE | Garanti à vie |
| Poteau acier galvanisé à chaud | Garanti à vie |
| Dispo pièces après arrêt fab. | 10 ans |



Sustainability Data

FRE2210



| Cradle to Gate A1-A3 | Total CO ₂ emission | CO ₂ e/kg | Matériaux recyclés |
|----------------------|--------------------------------|-------------------------|--------------------|
| | kg CO ₂ e | kg CO ₂ e/kg | % |
| FRE2210-3317 | 983,30 | 2,38 | 55,20 |

Le cadre général appliqué est la Déclaration Environnementale Produit (DEP), qui quantifie « les informations environnementales sur le cycle de vie d'un produit et permet des comparaisons entre produits remplissant la même fonction » (ISO, 2006). Cela suit la structure et applique une approche d'évaluation du cycle de vie à l'ensemble de l'étape du produit, de la matière première à la fabrication (A1-A3))

KOMPAN
Let's play

Kompan A/S

C.F. Tietgens Boulevard 32C
DK-5220 Odense SØ
Denmark



Verification of CO₂ calculation of: Sport



Data version no. 2023-10-05

The CO₂ calculation and data are in compliance with the principles of a carbon footprint impact according to the GHG protocol (Greenhouse Gas Protocol), Scope 3, cradle to gate related to all individual components in the product category: "Sport" represented by item no.: FRE600202-0901.

(Scope 3 emissions include emission sources in the upstream and downstream value chain).

Date: 30. October 2023 | Valid until: 30. October 2025

Verified by:

Julie Marie Vejsgaard Larsen, LCA & EPD Consultant

Verification based on report: Validation of CO₂ calculation of 9 categories of Kompan product line, version 1.0, prepared by: Bureau Veritas HSE, Denmark: Julie M. V. Larsen.

Publication date: 30. October 2023

By Bureau Veritas HSE
www.bureauveritas.dk
+45 7731 1000

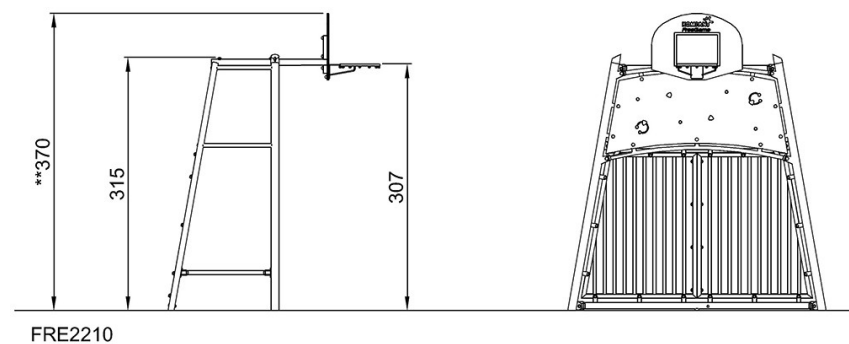
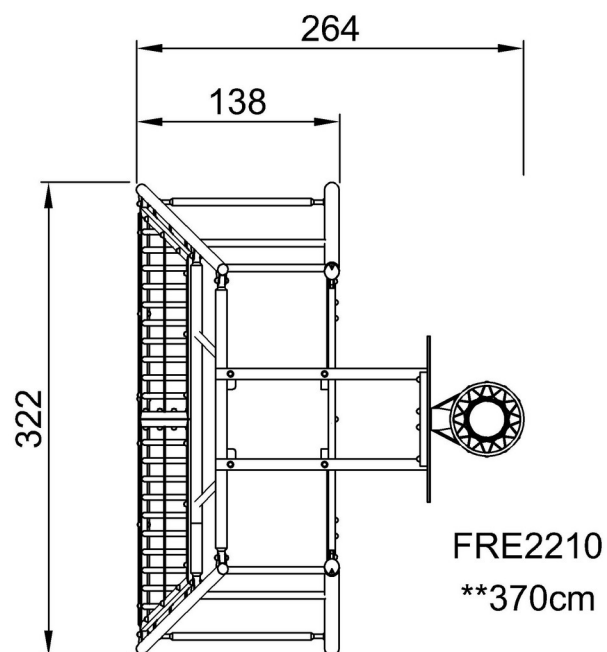


Fronton Cosmos 3 M

FRE2210

* Hauteur de chute maximale | ** Hauteur totale | *** Zone de sécurité

* Hauteur de chute maximale | ** Hauteur totale



[Cliquez pour voir le rapport VUE DE DESSUS](#)

[Cliquez pour voir le rapport VUE LATÉRALE](#)