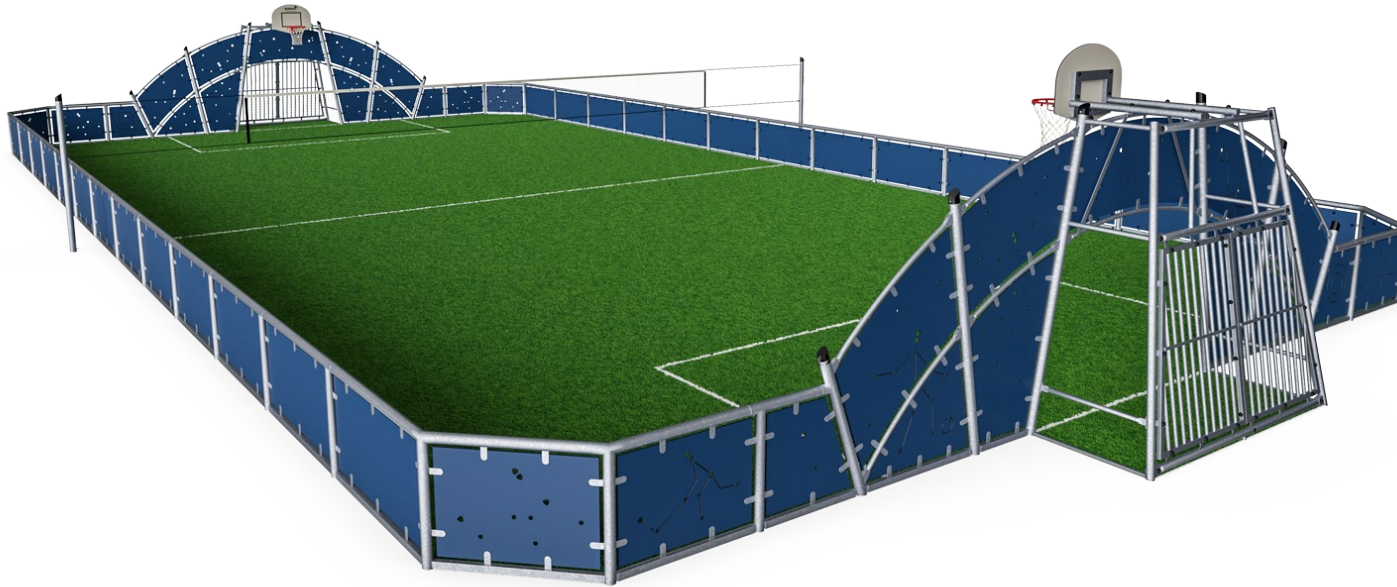


# Cosmos, 15x30m

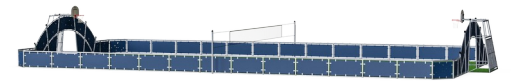
FRE2113



Item no. FRE2113-3317

## General Product Information

Dimensions LxWxH	3060x1580x370 cm
Age group	3+
Play capacity (users)	-
Colour options	●



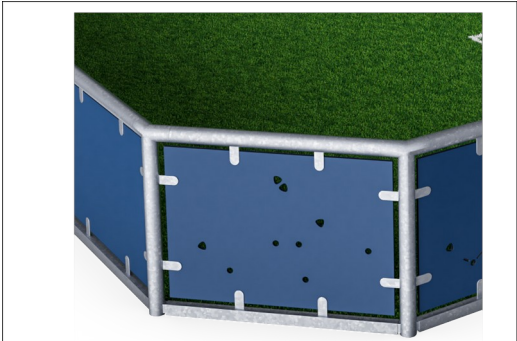
A multisport pitch includes two goals with built in basketball hoops and a height adjustable multisport net in the middle of the play area. The panels in the goal area have engraved sport motifs. The goals have removable anti-moped barriers for wheelchair access and the lower barriers have lower profile for grass edge protection with water drainage holes. The pitch

is based on a modular system. The dimensions of the pitch can be customized according to individual requirements. The HD polyethylene panels can be supplied in different standard colors. The pitch can also be equipped with a number of additional activities.

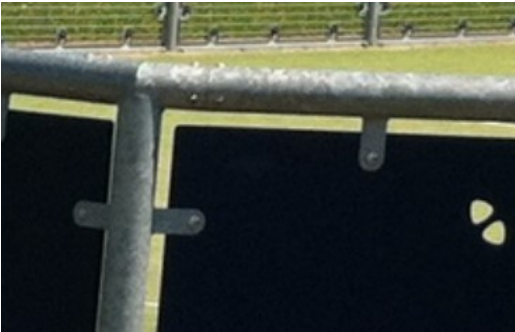


# Cosmos, 15x30m

FRE2113



Panels of 19mm EcoCore™. EcoCore™ is a highly durable, eco friendly material, which is not only recyclable after use, but also consists of material produced from +95% recycled post consumer material from food packing waste.



All steel components are manufactured from carbon steel, welding's according EN ISO 5817 & Hot dip galvanised (HDG) according to ISO1461. This process ensures good protection in all circumstances.



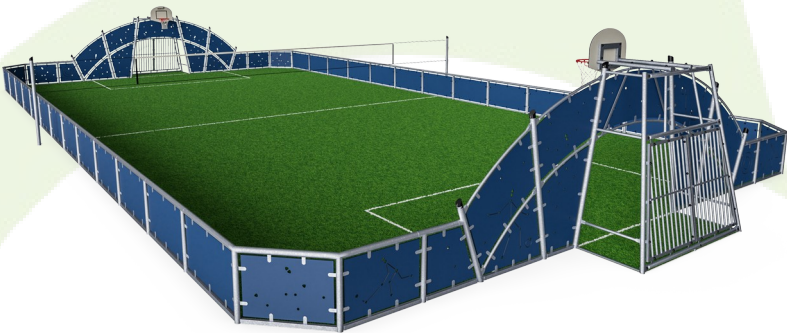
Classic goals are equipped as standard with nylon net or with reinforced nylon or steel bars as options. Cosmos goals are with metal bars.

Item no. FRE2113-3317	
Installation Information	
Max. fall height	0 cm
Safety surfacing area	0.0 m²
Total installation time	89.6
Excavation volume	4.45 m³
Concrete volume	4.34 m³
Footing depth (standard)	70 cm
Shipment weight	4,403 kg
Anchoring options	In-ground ✓
Warranty Information	
EcoCore HDPE	Lifetime
Hot dip galvanised steel	Lifetime
Spare parts guaranteed	10 years



# Sustainability Data

FRE2113



Cradle to Gate A1-A3	Total CO <sub>2</sub> emission	CO <sub>2</sub> e/kg	Recycled materials
	kg CO <sub>2</sub> e	kg CO <sub>2</sub> e/kg	%
FRE2113-3317	7,345.00	1.93	66.20

The overall framework applied for these factors is the Environmental Product Declaration (EPD), which quantifies "environmental information on the life cycle of a product and enable comparisons between products fulfilling the same function" (ISO, 2006). This follows the structure and applies a Life-Cycle Assessment approach to the entire Product stage from raw material through manufacturing (A1-A3))

## Verification of CO<sub>2</sub> calculation of: Sport



Data version no. 2023-10-05

The CO<sub>2</sub> calculation and data are in compliance with the principles of a carbon footprint impact according to the GHG protocol (Greenhouse Gas Protocol), Scope 3, cradle to gate related to all individual components in the product category: "Sport" represented by item no.: FRE600202-0901.

(Scope 3 emissions include emission sources in the upstream and downstream value chain).

Date: 30. October 2023 | Valid until: 30. October 2025

Verified by:

Julie Marie Vejsgaard Larsen, LCA & EPD Consultant

Verification based on report: Validation of CO<sub>2</sub> calculation of 9 categories of Kompan product line, version 1.0, prepared by: Bureau Veritas HSE, Denmark: Julie M. V. Larsen.

Publication date: 30. October 2023



By Bureau Veritas HSE  
www.bureauveritas.dk  
+45 7731 1000

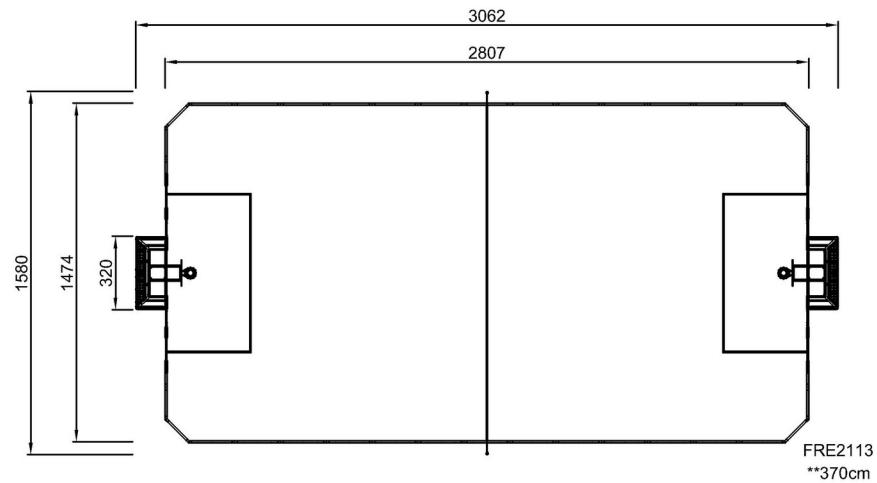


# Cosmos, 15x30m

FRE2113

\* Max fall height | \*\* Total height | \*\*\* Safety surfacing area

\* Max fall height | \*\* Total height



[Click to see TOP VIEW](#)

[Click to see SIDE VIEW](#)