
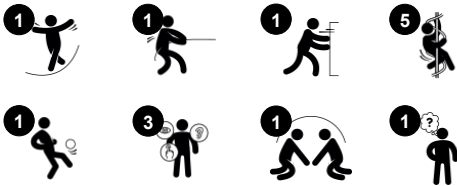


# Multispinner Carousel, Teal

ELE400063



Item no. ELE400063-3717	
General Product Information	
Dimensions LxWxH	176x176x77 cm
Age group	3+
Play capacity (users)	7
Colour options	



The quirky look of the fabulous Multispinner Carousel attracts children to try it out again and again. Easily accessible due to its inclination having one lower and one higher end, the Multispinner embraces both younger and older children. The bowls make comfortable seating options. The middle part is a show-of stage for those with extremely good balance skills. With

great cooperation skills, the Multispinner can be spun from seated position, having children coordinate their swinging movements, leaning forwards and backwards in an agreed rhythm. Thus the Multispinner, apart from being great fun, trains cooperation and team work. The spinning movement is a great training of the vestibular system, the sense of balance in

particular. The sense of balance is fundamental to for instance the ability to sit still on a chair, concentrating. In other words, the Multispinner is great play with a purpose.



# Multispinner Carousel, Teal

ELE400063



## Differently colored bowls

**Social-Emotional:** encourages children to negotiate which color seat they want, turn-taking. **Cognitive:** supports rules understanding and rules games: children will find reasons for choosing the one or the other color.



## Spacious platform

**Physical:** allows for more body positions: sitting, lying, standing, which facilitates use for children with physical disabilities. **Social-Emotional:** facilitates many children using the Tipi Carousel simultaneously, supporting cooperation and turn-taking.



## Tilted position rotation

**Physical:** coordination and balance are supported when spinning. Leg, core and arms are trained when pushing and pulling. When jumping off, bone density is strengthened.

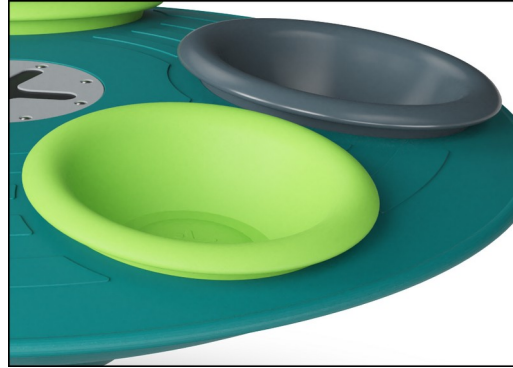
**Social-Emotional:** cooperation, consideration and turn-taking. Wide span of user ages and abilities. **Cognitive:** logical thinking, figuring out how to make rotation when seated, speeding up or slowing down the spin.

# Multispinner Carousel, Teal

ELE400063



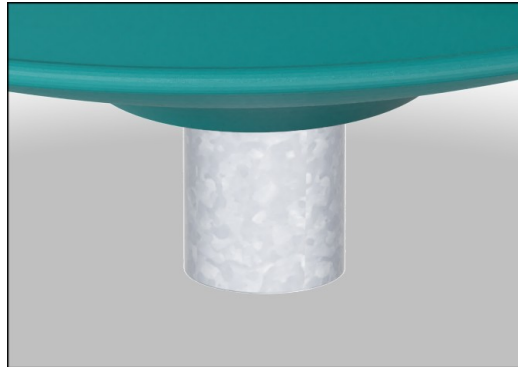
The GreenLine Multispinner base and bowl in teal color are designed with molded PP parts which consist of 33% recycled post-consumer ocean waste. Ocean waste is collected from the maritime industry, such as fishing nets, ropes and trawls.



The bowls are made of recyclable PE made from 33% post consumer materials. The bowls are molded in one piece with integrated metal thread bushings and water drain hole to ensure high durability in all climates around the world.



Heavy duty engineered bearing system with single row deep groove ball bearings with rubber seals. The fully closed bearing construction is lifetime lubricated and maintenance free.



The steel surfaces are hot dip galvanised inside and outside with lead free zinc. The galvanisation has excellent corrosion resistance in outside environments and requires low maintenance.



The Multispinner Carousel is offered in three different color combinations. Two with a grey base and a third GreenLine version in a dark teal color.



GreenLine versions in teal color are designed with molded PE parts which consist of 33% recycled post-consumer ocean waste. Ocean waste is collected from the maritime industry, such as fishing nets, ropes and trawls.

Item no. ELE400063-3717

## Installation Information

Max. fall height	100 cm
Safety surfacing area	26.1 m <sup>2</sup>
Total installation time	5.3
Excavation volume	0.44 m <sup>3</sup>
Concrete volume	0.31 m <sup>3</sup>
Footing depth (standard)	100 cm
Shipment weight	200 kg
Anchoring options	Surface ✓ In-ground ✓

## Warranty Information

Bearing construction	5 years
Hardware	10 years
Hollow PE parts	10 years
Hot dip galvanised steel	Lifetime
Spare parts guaranteed	10 years



# Sustainability Data

ELE400063



Cradle to Gate A1-A3	Total CO <sub>2</sub> emission	CO <sub>2</sub> e/kg	Recycled materials
	kg CO <sub>2</sub> e	kg CO <sub>2</sub> e/kg	%
ELE400063-3717	315.30	2.13	41.00

The overall framework applied for these factors is the Environmental Product Declaration (EPD), which quantifies "environmental information on the life cycle of a product and enable comparisons between products fulfilling the same function" (ISO, 2006). This follows the structure and applies a Life-Cycle Assessment approach to the entire Product stage from raw material through manufacturing (A1-A3))

Kompan A/S  
C.F. Tietgens Boulevard 32C  
DK-5220 Odense SØ  
Denmark



## Verification of CO<sub>2</sub> calculation of: Freestanding play equipment



Data version no. 2023-10-05

The CO<sub>2</sub> calculation and data are in compliance with the principles of a carbon footprint impact according to the GHG protocol (Greenhouse Gas Protocol), Scope 3, cradle to gate related to all individual components in the product category: "Freestanding play equipment" represented by item no.: GXY916012-3417.

(Scope 3 emissions include emission sources in the upstream and downstream value chain).

Date: 30. October 2023 | Valid until: 30. October 2025  
Verified by:

Julie Marie Vejsgaard Larsen, LCA & EPD Consultant

Verification based on report: Validation of CO<sub>2</sub> calculation of 9 categories of Kompan product line, version 1.0, prepared by: Bureau Veritas HSE, Denmark: Julie M. V. Larsen.

Publication date: 30. October 2023

By Bureau Veritas HSE  
www.bureauveritas.dk  
+45 7731 1000

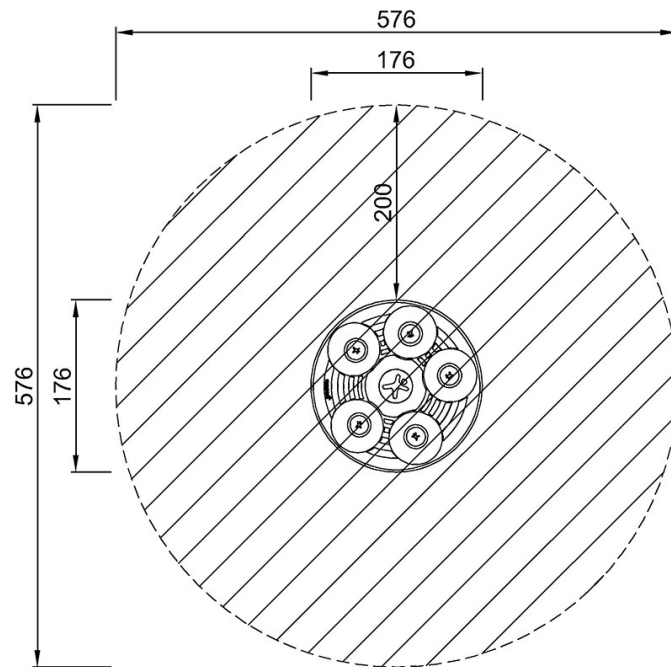


# Multispinner Carousel, Teal

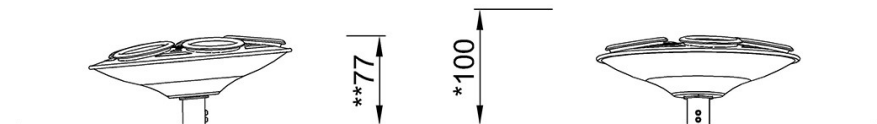
ELE400063

\* Max fall height | \*\* Total height | \*\*\* Safety surfacing area

\* Max fall height | \*\* Total height



ELE400063  
\*100cm  
\*\*77cm  
\*\*\*26.1m<sup>2</sup>



ELE400063

[Click to see TOP VIEW](#)

[Click to see SIDE VIEW](#)