

Wacky Spinner

ELE500007



Item no. ELE500007-3717E

General Product Information

Dimensions LxWxH	49x48x44 cm
Age group	4+
Play capacity (users)	1
Color options	  



WOW! Once they try it, children don't want to stop: the sensation of combined rotation and rocking is so much fun. It is great, challenging balance and proprioception training for older children to manage the rotating rocker. The distance to the ground makes it a pretty conscious choice whether you think you can stay on the Wacky Spinner once it starts

rotating and rocking. But for less skilled balancers, there is a possibility to sit, or lie, on the slightly curved rubbery surface. More children can be seated back to back, or stand close together and rotate and rock. This encourages cooperation and turn-taking. When placed more together, the Wacky Spinners invite games with rules, e.g. who can stay the

longest. Knowing how to position your body to stay on the Wacky Spinner trains movement planning which is important for instance in sports.



Wacky Spinner

ELE500007



Rubbery, curved surface

Physical: the curved platform makes balancing more difficult when the feet are placed in the middle, and easier when they are intuitively placed along the sides. **Social-Emotional:** the rubbery feel adds skid-resistance and a comfortable, steady grip.



Tilted, enclosed ball-bearing

Physical: the movement from the tilted ball-bearing trains balance and proprioception, both important fundamentals for movement control. **Social-Emotional:** the challenge of balancing on a rotating, tilted platform supports self confidence and risk taking skills.

Wacky Spinner

ELE500007



Lower base plate is made of 19mm EcoCore™. EcoCore™ is a highly durable, eco friendly material, which is not only recyclable after use, but also consists of material produced from +95% recycled post consumer material from food packing waste.



Upper plate is made of Ekogrip® panel that consist of a 15mm thick PE base with 3 mm top-layer of soft rubber with a non-skid effect.

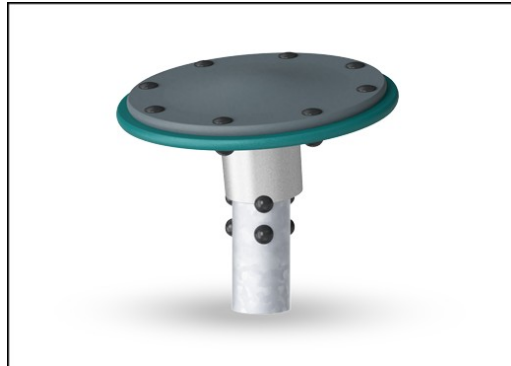


Heavy duty engineered bearing system with single row deep groove ball bearings with rubber seals. The fully closed bearing construction is lifetime lubricated and maintenance free. The Bearing system has an integrated drag brake according to global safety standards.

Item no. ELE500007-3717E	
Installation Information	
Max. fall height	100 cm
Safety surfacing area	9.6 m²
Total installation time	1.6
Excavation volume	0.11 m³
Concrete volume	0.09 m³
Footing depth (standard)	90 cm
Shipment weight	28 kg
Anchoring options	In-ground ✓ Surface ✓



The steel surfaces are hot dip galvanised inside and outside with lead free zinc. The galvanisation has excellent corrosion resistance in outside environments and requires low maintenance.

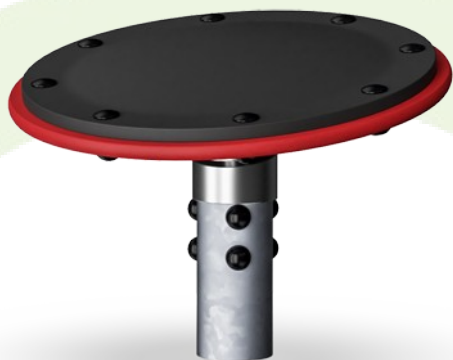


KOMPAN GreenLine versions are designed with ultimate environmentally friendly materials with lowest possible CO2e emission factor such as EcoCore™ panels of +95% post consumer recycled ocean waste.



Sustainability Data

ELE500007



Cradle to Gate A1-A3	Total CO ₂ emission	CO ₂ e/kg	Recycled materials
	kg CO ₂ e	kg CO ₂ e/kg	%
ELE500007-3717E	77.10	3.02	48.40

The overall framework applied for these factors is the Environmental Product Declaration (EPD), which quantifies "environmental information on the life cycle of a product and enable comparisons between products fulfilling the same function" (ISO, 2006). This follows the structure and applies a Life-Cycle Assessment approach to the entire Product stage from raw material through manufacturing (A1-A3))

Kompan A/S
C.F. Tietgens Boulevard 32C
DK-5220 Odense SØ
Denmark



Verification of CO₂ calculation of: Freestanding play equipment



Data version no. 2023-10-05

The CO₂ calculation and data are in compliance with the principles of a carbon footprint impact according to the GHG protocol (Greenhouse Gas Protocol), Scope 3, cradle to gate related to all individual components in the product category: "Freestanding play equipment" represented by item no.: GXY916012-3417.

(Scope 3 emissions include emission sources in the upstream and downstream value chain).

Date: 30. October 2023 | Valid until: 30. October 2025
Verified by:

Julie Marie Vejsgaard Larsen, LCA & EPD Consultant

Verification based on report: Validation of CO₂ calculation of 9 categories of Kompan product line, version 1.0, prepared by: Bureau Veritas HSE, Denmark: Julie M. V. Larsen.

Publication date: 30. October 2023

By Bureau Veritas HSE
www.bureauveritas.dk
+45 7731 1000

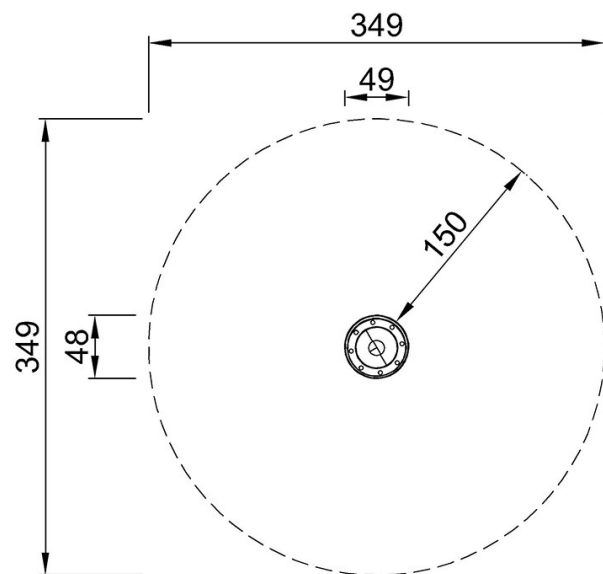


Wacky Spinner

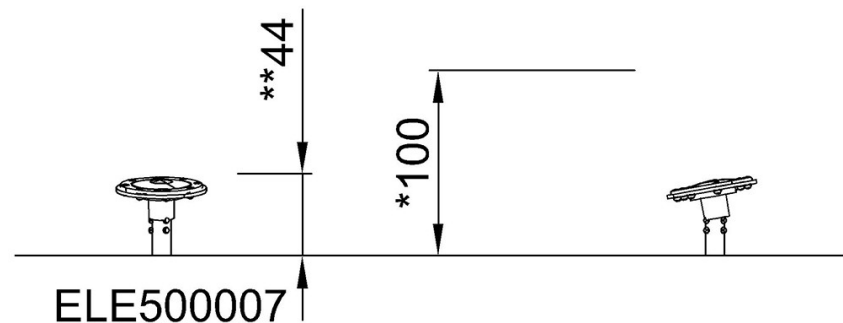
ELE500007

* Max fall height | ** Total height | *** Safety surfacing area

* Max fall height | ** Total height



ELE500007
*100cm
**44cm
***9.6m²



[Click to see TOP VIEW](#)

[Click to see SIDE VIEW](#)