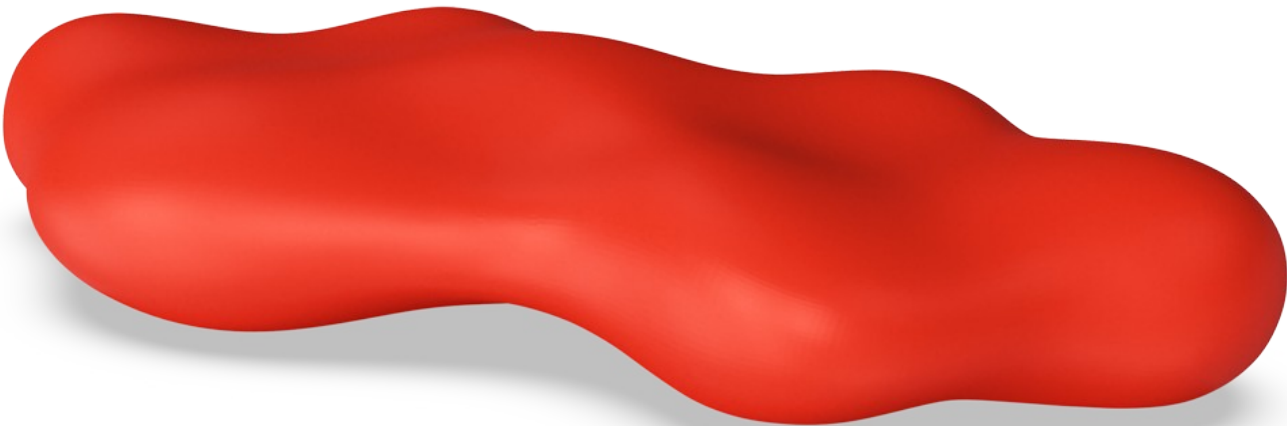


LOOP Lava

TPP29670



The LOOP Lava invites informal breaks and creative expression while people sit and interact around it. This organic seating unit fits into urban spaces, parks, schools, institutions, and company headquarters alike.

Item no. TPP29670-0001	
General Product Information	
Dimensions LxWxH	8'6"x3'11"x1'8"
Age group	
Play capacity (users)	
Color options	

LOOP Lava

TPP29670



The Loops modular elements are made of rotation-molded polyethylene (PE) with a 6-7mm thickness. The Loops are UV-resistant, have excellent impact strength, and are usable within a large temperature span.



The product molds are textured through abrasive blasting, enhancing surface friction and reducing slipperiness, ensuring a safer experience.



The Loops come in 10 standard colors, offering various options to personalize your product and ensure a perfect fit for your intended space.

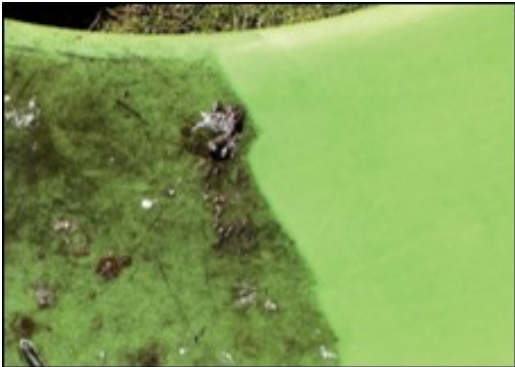
Item no. TPP29670-0001	
Installation Information	
Total installation time	0.0
Excavation volume	0yd ³
Concrete volume	0yd ³
Footing depth (standard)	0'0"
Shipment weight	82lbs
Anchoring options	In-ground ✓
	Surface ✓



The Loops are available in a recycled version made from 100% recycled materials. 85% of the plastic is sourced from internal waste and production surplus, while the remaining 15% comes from polyethylene bags. The recycled version comes in an anthracite color.



The Loops can be anchored to the ground by filling them with water or sand using integrated plugs. Alternatively, they can be secured using surface or ground brackets.



This product withstands most cleaning agents and chemicals and can be cleaned using a high-pressure cleaner. The color can be revived using vinyl cleaner or similar.