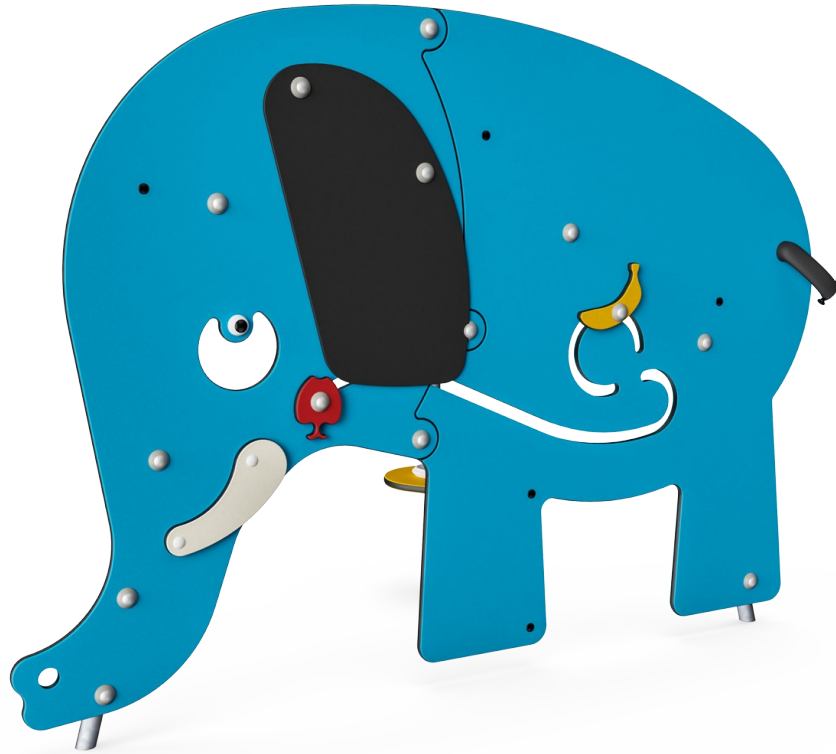



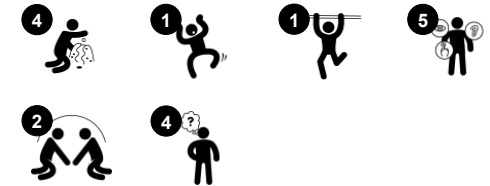
Elephant

MSC5420



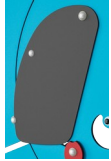
The eye-catching blue elephant invites toddlers to use their gross motor skills, tell stories and support imaginative play. The tactile and manipulative elements stimulate a social and verbal interaction as well as build up a better understanding of the cause and effect. The Elephant is an attractive and appealing landmark in a playground.

Item no. MSC542000-3417P	
General Product Information	
Dimensions LxWxH	188x75x140 cm
Age group	6m+
Play capacity (users)	4
Colour options	



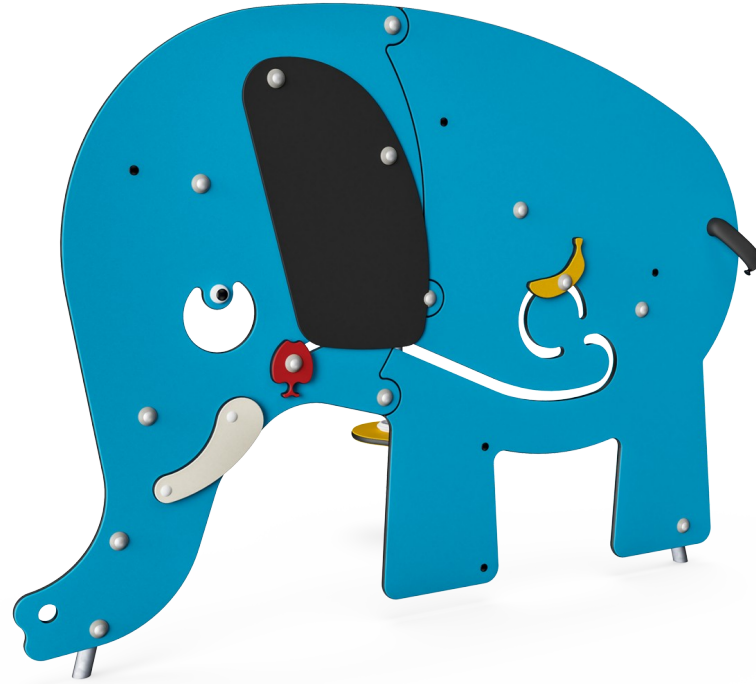
Elephant

MSC5420



Ear

Social-Emotional: can be played from both sides, encouraging cooperation. **Cognitive:** tactile variation helps children to understand the characteristics of different materials and their uses. Cause and effect understanding when bending rubber flap.



Tail

Social-Emotional: cooperation and turn-taking when pulling the tail. **Cognitive:** understanding of object permanence: things can disappear without being gone forever. **Creative:** leaving a mark by placing tail in your preferred position.



Theme

Cognitive: suggests a theme and supports dramatic play, which stimulates language and communication skills.



Eye

Social-Emotional: the eye evokes emotions of empathy, encouraging children to look the animal in the eye.



Play sphere

Social-Emotional: can be played from both sides, encouraging cooperation. **Cognitive:** cause and effect understanding. **Creative:** leave a mark and place the spheres at different positions.

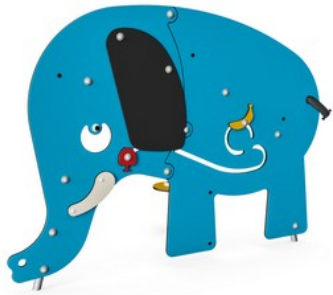


Table

Social-Emotional: fine meeting place and a space creator. Sharing and cooperation create a social scenario that supports communication and cooperation.

Elephant

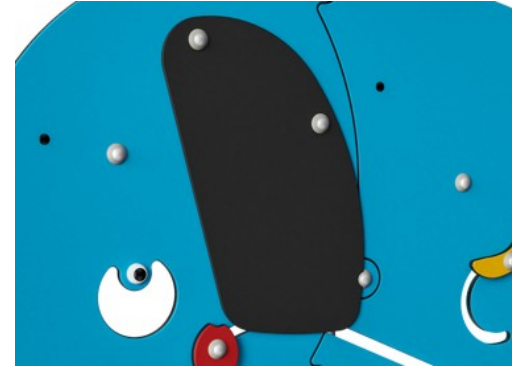
MSC5420



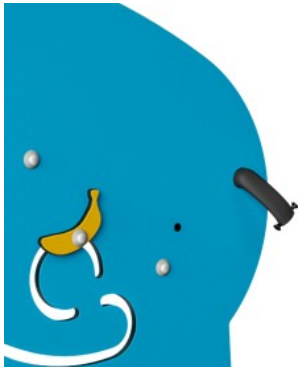
Panels of 19mm EcoCore™. EcoCore™ is a highly durable, eco friendly material, which is not only recyclable after use, but also consists of material produced from +95% recycled post consumer material from food packing waste.



The steel support posts are hot dip galvanised inside and outside with lead free zinc. The galvanisation has excellent corrosion resistance in outside environments and requires low maintenance.



Corocord membranes consist of friction-proof rubberized material of conveyor belt quality with excellent UV resistance. Tested and compliant with REACH requirements for PAH. Embedded is a four-layered armouring made of woven polyester. The armouring and the two surface layers result in a total thickness of 7.5 mm.



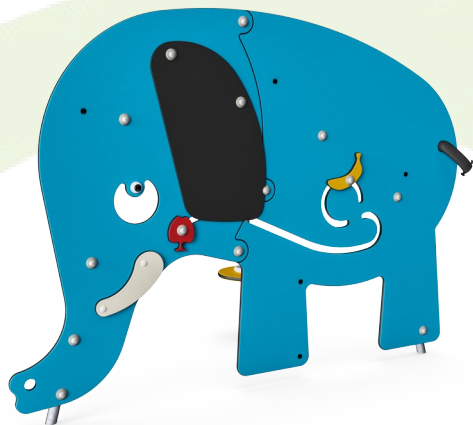
Tail is made of soft and bendable woven bands. Base material of straps is PP which has good wearing and impact resistance.

Item no. MSC542000-3417P	
Installation Information	
Max. fall height	0 cm
Safety surfacing area	14.2 m²
Total installation time	4.2
Excavation volume	0.13 m³
Concrete volume	0.00 m³
Footing depth (standard)	60 cm
Shipment weight	55 kg
Anchoring options	In-ground ✓ Surface ✓
Warranty Information	
EcoCore HDPE	Lifetime
Hot dip galvanised steel	Lifetime
Membrane	2 years
Movable parts	2 years
Spare parts guaranteed	10 years



Sustainability Data

MSC5420



Cradle to Gate A1-A3	Total CO ₂ emission	CO ₂ e/kg	Recycled materials
	kg CO ₂ e	kg CO ₂ e/kg	%
MSC542000-3417P	80.20	1.58	76.00

The overall framework applied for these factors is the Environmental Product Declaration (EPD), which quantifies "environmental information on the life cycle of a product and enable comparisons between products fulfilling the same function" (ISO, 2006). This follows the structure and applies a Life-Cycle Assessment approach to the entire Product stage from raw material through manufacturing (A1-A3))

Kompan A/S
C.F. Tietgens Boulevard 32C
DK-5220 Odense SØ
Denmark



Verification of CO₂ calculation of: Themed play systems



Data version no. 2023-10-05

The CO₂ calculation and data are in compliance with the principles of a carbon footprint impact according to the GHG protocol (Greenhouse Gas Protocol), Scope 3, cradle to gate related to all individual components in the product category: "Themed play systems" represented by item no.: MSC641100-3717P.

(Scope 3 emissions include emission sources in the upstream and downstream value chain).

Date: 30. October 2023 | Valid until: 30. October 2025
Verified by:

Julie Marie Vejsgaard Larsen, LCA & EPD Consultant

Verification based on report: Validation of CO₂ calculation of 9 categories of Kompan product line, version 1.0, prepared by: Bureau Veritas HSE, Denmark: Julie M. V. Larsen.

Publication date: 30. October 2023

By Bureau Veritas HSE
www.bureauveritas.dk
+45 7731 1000

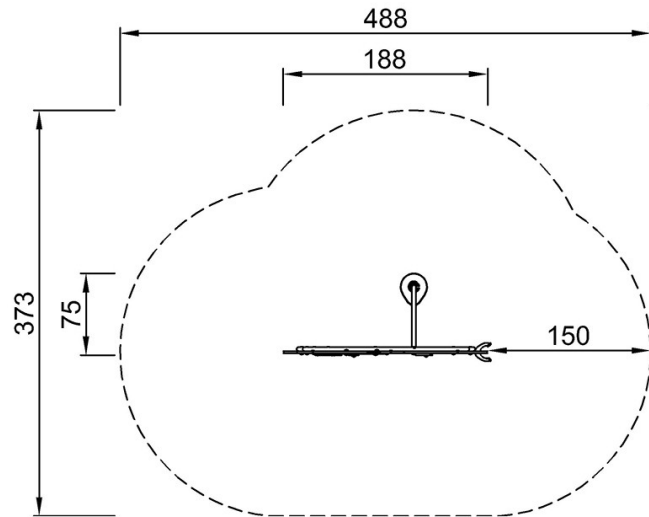


Elephant

MSC5420

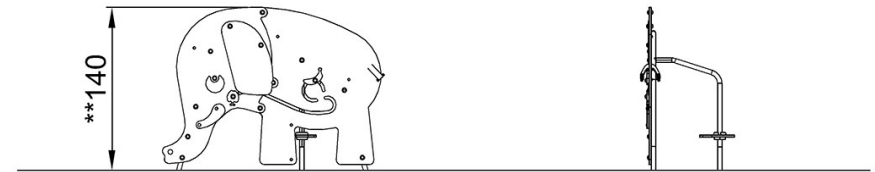
* Max fall height | ** Total height | *** Safety surfacing area

* Max fall height | ** Total height



MSC542000P

**140cm
***14.2m²



MSC542000P

[Click to see TOP VIEW](#)

[Click to see SIDE VIEW](#)