



Toddler Carriage

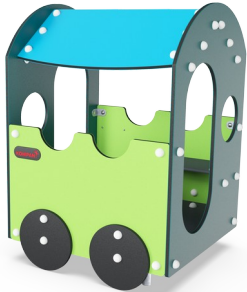
M537



The carriage can function as a play space in its own right or be combined with the train for the full thematic role play impact of travelling. The nice and sheltered space can be used for gathering, supported by the seat in the corner. The transparency of the design and the many openings support communication from the inside to the outside, thus supporting social

play and offering play for heaps of children.

Item no. M53701-3418P	
General Product Information	
Dimensions LxWxH	96x96x132 cm
Age group	6m+
Play capacity (users)	3
Colour options	 



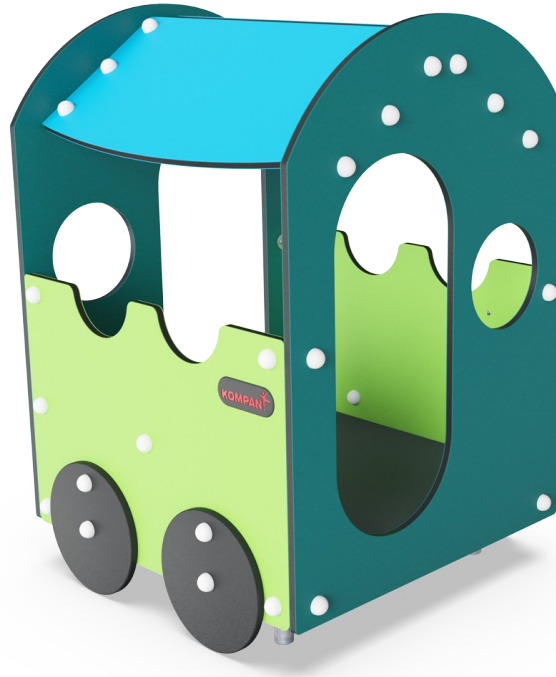
Toddler Carriage

M537



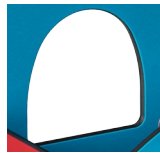
Theme

Cognitive: suggests a theme and supports dramatic play, which stimulates language and communication skills.



Bench

Social-Emotional: gathering, cooperating or taking a break from play - all train social skills.



Window

Social-Emotional: invites interaction between sides and cooperative play.

Toddler Carriage

M537



Panels of 19mm EcoCore™. EcoCore™ is a highly durable, eco friendly material, which is not only recyclable after use, but also consists of material produced from +95% recycled post consumer material from food packing waste.

Floor is made of HPL with a thickness 10 mm and non skid surface texture according to EN 438-6. KOMPAN HPL has high wearing strength to ensure long lifetime in all climates.



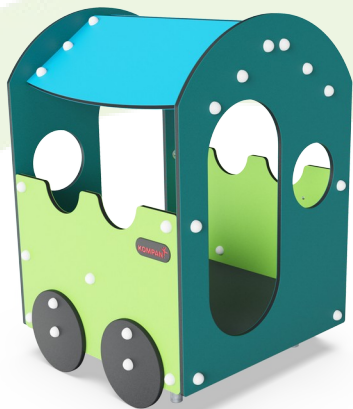
KOMPAN GreenLine versions are designed with ultimate environmentally friendly materials with lowest possible CO2e emission factor such as EcoCore™ panels of +95% post consumer recycled ocean waste.

Item no. M53701-3418P	
Installation Information	
Max. fall height	48 cm
Safety surfacing area	13.4 m²
Total installation time	5.2
Excavation volume	0.09 m³
Concrete volume	0.00 m³
Footing depth (standard)	60 cm
Shipment weight	149 kg
Anchoring options	In-ground ✓ Surface ✓
Warranty Information	
EcoCore HDPE	Lifetime
HPL decks	15 years
Movable parts	2 years
Spare parts guaranteed	10 years



Sustainability Data

M537



Cradle to Gate A1-A3	Total CO ₂ emission	CO ₂ e/kg	Recycled materials
	kg CO ₂ e	kg CO ₂ e/kg	%
M53701-3418P	152.70	1.50	65.60

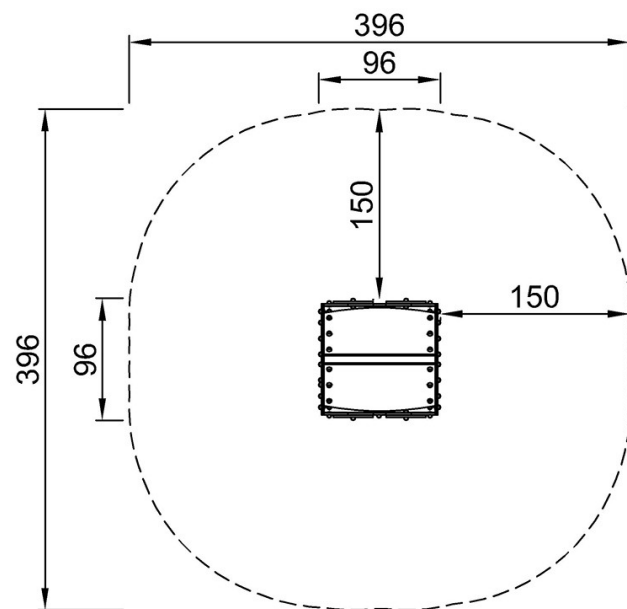
The overall framework applied for these factors is the Environmental Product Declaration (EPD), which quantifies "environmental information on the life cycle of a product and enable comparisons between products fulfilling the same function" (ISO, 2006). This follows the structure and applies a Life-Cycle Assessment approach to the entire Product stage from raw material through manufacturing (A1-A3))

Toddler Carriage

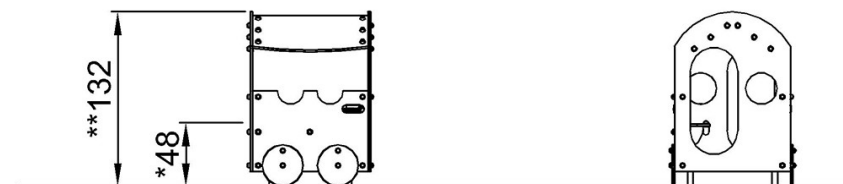
M537

* Max fall height | ** Total height | *** Safety surfacing area

* Max fall height | ** Total height



M53701
*48cm
**132cm
***13.4m²



M53701

[Click to see TOP VIEW](#)

[Click to see SIDE VIEW](#)