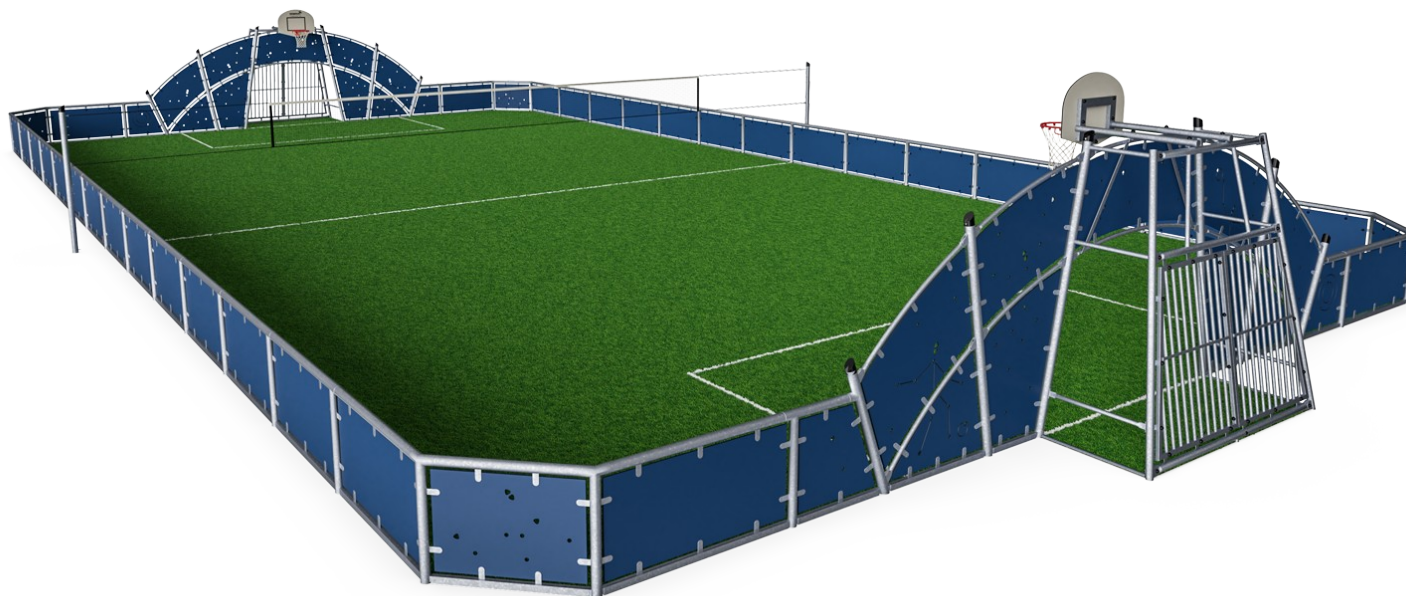


Cosmos - Multi sportveld 16x32m

FRE2115

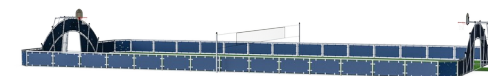
KOMPAN
Let's play



Item nummer FRE2115-3317

Algemene Product Informatie

| | |
|------------------|------------------|
| Afmetingen LxBxH | 3262x1700x370 cm |
| Leeftijdsgroep | 3+ |
| Speelcapaciteit | - |
| Kleuropties | ● |



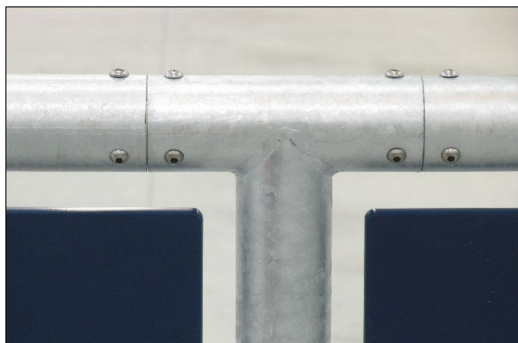
Een FREEGAME Cosmos Multi sportveld is multifunctioneel, flexibel en duurzaam. Er is plaats voor lichamelijke activiteiten en het is een sociale ontmoetingsplaats, waar iedereen de aantrekkingskracht van sport kan ervaren: de vreugde van winnen, leren omgaan met verlies en het plezier van samenspel. FREEGAME leent zich ook goed voor

georganiseerde groepsevenementen. Het moderne design van de FREEGAME COSMOS bewijst zichzelf door zich probleemloos te laten integreren in landelijke of stedelijke gebieden. Het is gebaseerd op een uitzonderlijk duurzame, gegalvaniseerde stalen structuur.



Cosmos - Multi sportveld 16x32m

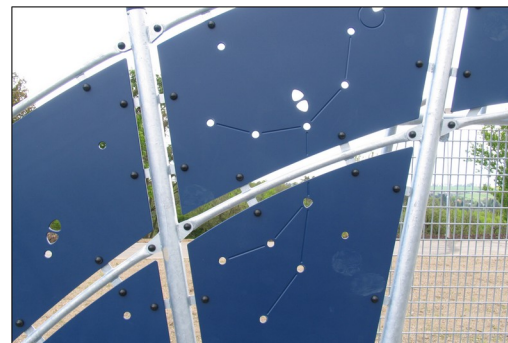
FRE2115



All steel components are manufactured from carbon steel, welding's according EN ISO 5817 & Hot dip galvanized (HDG) according to ISO1461. This process ensures good protection in all circumstances.



The goal measures ~140cm in depth and ~330cm in width with all posts made of galvanized steel with a hot dip galvanized surface treatment. The front frame is made with Ø48 tubing, and the backside of the goal uses 10 tubes with a diameter of ø38.



The HDPE panels are made with +95% recycled post-consumer material from e.g., food packing waste. Available in Night Sky Blue, but multiple colours can be requested. To increase the play value, you can also request HDPE panels with patterns or logos engraved.



Pole tops are molded of thermoplastic rubber (TPV) with a steel inlay. TPV is highly durable against wear and tear, and the steel inlay secures durability.



The basketball hoop is made from hot dipped galvanized steel with a powder coated finish and a backboard made from +95% PCR HDPE. The net is made from 100% nylon, with a circumference of ~Ø30cm at the bottom and ~Ø50cm at the top. The net can also be supplied with steel reinforced PA net or steel chains.

Item nummer FRE2115-3317

Installatie informatie

| | |
|------------------------|-------------|
| Max. valhoogte | 0 cm |
| Veiligheidszone | 0,0 m² |
| Totale installatietijd | 93,9 |
| Graafwerk (vol.) | 4,61 m³ |
| Benodigd beton | 4,50 m³ |
| Verankeringsdiepte | 70 cm |
| Verzendingsgewicht | 4.661 kg |
| Verankeringsopties | In-ground ✓ |

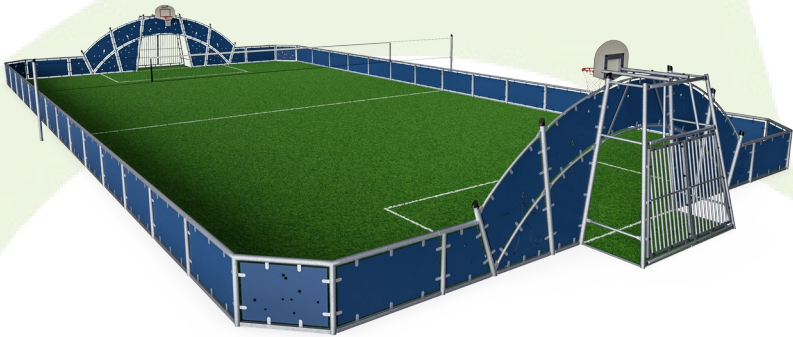
Garantie informatie

| | |
|---------------------------------|------------|
| EcoCore HDPE | Levenslang |
| HDG post | Levenslang |
| Gegarandeerde reserveonderdelen | 10 jaar |



Sustainability Data

FRE2115



| Cradle to Gate A1-A3 | Total CO ₂ emission | CO ₂ e/kg | Recycled materials |
|----------------------|--------------------------------|-------------------------|--------------------|
| | kg CO ₂ e | kg CO ₂ e/kg | % |
| FRE2115-3317 | 7.697,00 | 1,91 | 66,60 |

The overall framework applied for these factors is the Environmental Product Declaration (EPD), which quantifies "environmental information on the life cycle of a product and enable comparisons between products fulfilling the same function" (ISO, 2006). This follows the structure and applies a Life-Cycle Assessment approach to the entire Product stage from raw material through manufacturing (A1-A3))

Kompan A/S
C.F. Tietgens Boulevard 32C
DK-5220 Odense SØ
Denmark



Verification of CO₂ calculation of: Sport



Data version no. 2023-10-05

The CO₂ calculation and data are in compliance with the principles of a carbon footprint impact according to the GHG protocol (Greenhouse Gas Protocol), Scope 3, cradle to gate related to all individual components in the product category: "Sport" represented by item no.: FRE600202-0901.

(Scope 3 emissions include emission sources in the upstream and downstream value chain).

Date: 30. October 2023 | Valid until: 30. October 2025
Verified by:

Julie Marie Vejsgaard Larsen, LCA & EPD Consultant

Verification based on report: Validation of CO₂ calculation of 9 categories of Kompan product line, version 1.0, prepared by: Bureau Veritas HSE, Denmark: Julie M. V. Larsen.

Publication date: 30. October 2023

By Bureau Veritas HSE
www.bureauveritas.dk
+45 7731 1000

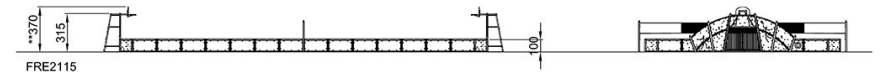
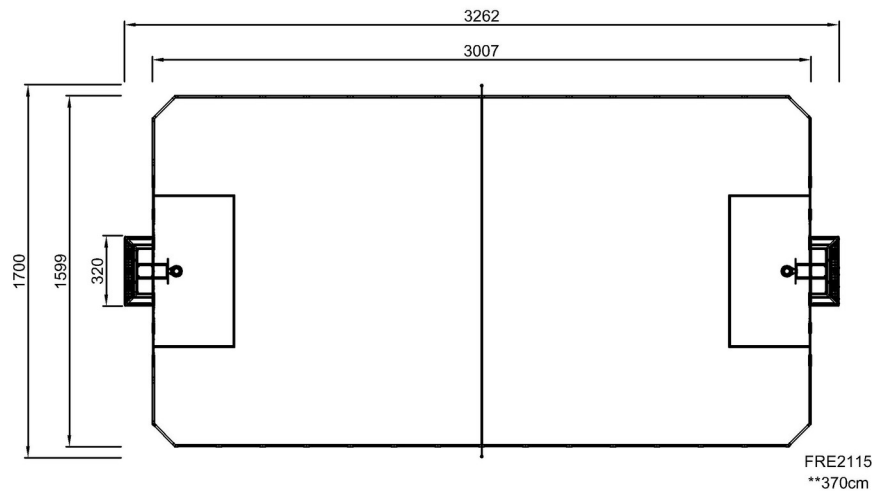


Cosmos - Multi sportveld 16x32m

FRE2115

Max. valhoogte | Totale Hoogte | Veiligheidszone

Max. valhoogte | Totale Hoogte



[Bekijk BOVENAANZICHT](#)

[Bekijk ZIJAANZICHT](#)