

Toddler's Town

MSC5427




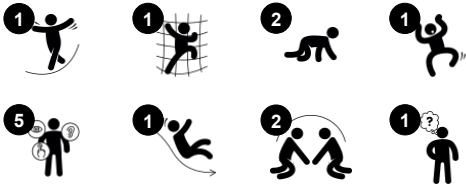
The Toddler's Town is a favorite playground activity that attracts children to be active and interactive in a thrilling way. The Toddler's Town offers a tucked-away space under the slide platform, inviting meetings, socializing, and the beginning of the first friendships. The stairway is wide and can be accessed by walking or crawling. This develops children's cross-

coordination, an important motor skill that with others supports the development of reading skills later in life. Sliding is a great thrill for the youngest child. It additionally trains their core muscles, sitting upright while sliding down. Sliding trains the sense of balance and spatial understanding, too. These skills are important in navigating the world securely. They are the

foundation of all motor skills and thus a foundation for physical confidence in the child. The town theme is familiar and inspires storytelling, developing language.



Item no. MSC542701-3418P	
General Product Information	
Dimensions LxWxH	8'0"x2'0"x4'7"
Age group	2 - 5
Play capacity (users)	2
Color options	



Toddlers Town

MSC5427



Slide

Physical: sliding develops spatial awareness and a sense of balance. Furthermore, the core muscles are trained when sitting upright going down. **Social-Emotional:** empathy stimulated by turn-taking. **Cognitive:** young children develop their understanding of space, speed and distances when sliding down quickly.



Stairway

Physical: climbing the stairs supports cross coordination as well as arm and leg muscles. **Social-Emotional:** room for active breaks and adult helpers.



Themed element

Cognitive: sets a tangible theme and so spurs dramatic play. Dramatic play is a great trainer of language skills.

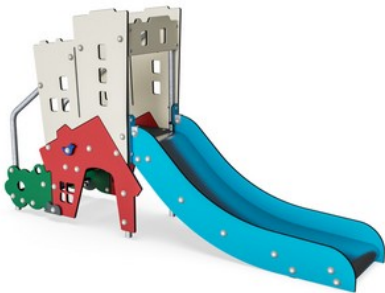


Den

Physical: crawling through the possible openings trains spatial awareness. **Social-Emotional:** the enclosed space invites social play for two or three children.

Toddlers Town

MSC5427



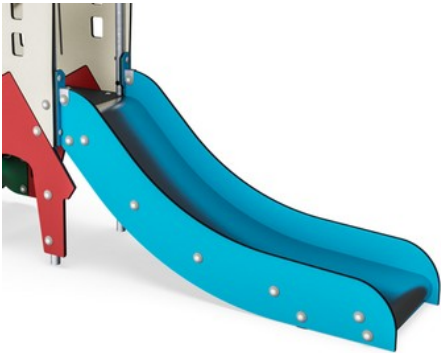
Panels of 19mm EcoCore™. EcoCore™ is a highly durable, eco friendly material, which is not only recyclable after use, but also consists of a core produced from 100% recycled material.



All floors are made of High-Pressure Laminate HPL with a thickness 17.8mm and non skid surface texture according to EN 438-6. KOMPAN HPL has high wearing strength to ensure long lifetime in all climates.



The steel surfaces are hot-dip galvanized inside and outside with lead-free zinc. The galvanization has excellent corrosion resistance in outside environments and requires minimal maintenance.



The slide bed can be chosen in different materials: Straight molded PE or stainless steel slide bed t=2mm. Sides of the slides are made of EcoCore™.

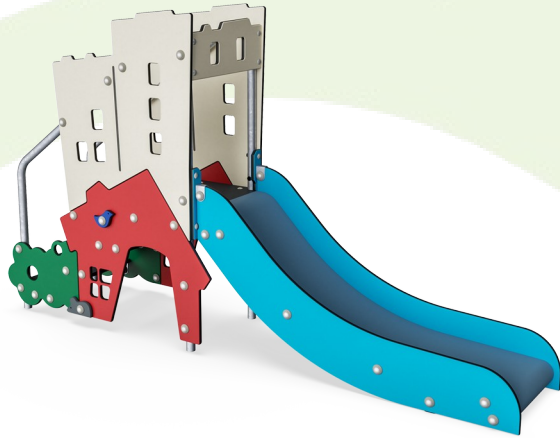
Item no. MSC542701-3418P	
Installation Information	
Max. fall height	2'0"
Safety surfacing area	241ft²
Total installation time	7.3
Excavation volume	0.22yd³
Concrete volume	0yd³
Footing depth (standard)	2'0"
Shipment weight	304lbs
Anchoring options	In-ground ✓ Surface ✓
Warranty Information	
EcoCore HDPE	Lifetime
Hot dip galvanized steel	Lifetime
HPL decks	15 Years
Spare Parts Availability	10 Years

Elevated activities 0	Accessible elevated activities	Accessible ground level activities	Accessible ground level play types
Present	0	0	0
Required	0	0	0



Sustainability Data

MSC5427



Cradle to Gate A1-A3	Total CO ₂ emission	CO ₂ e/kg	Recycled materials
	kg CO ₂ e	kg CO ₂ e/kg	%
MSC542701-3418P	177.60	1.87	62.50

The overall framework applied for these factors is the Environmental Product Declaration (EPD), which quantifies "environmental information on the life cycle of a product and enable comparisons between products fulfilling the same function" (ISO, 2006). This follows the structure and applies a Life-Cycle Assessment approach to the entire Product stage from raw material through manufacturing (A1-A3))

Kompan A/S

C.F. Tietgens Boulevard 32C
DK-5220 Odense SØ
Denmark



Verification of CO₂ calculation of: Themed play systems



Data version no. 2023-10-05

The CO₂ calculation and data are in compliance with the principles of a carbon footprint impact according to the GHG protocol (Greenhouse Gas Protocol), Scope 3, cradle to gate related to all individual components in the product category: "Themed play systems" represented by item no.: MSC641100-3717P.

(Scope 3 emissions include emission sources in the upstream and downstream value chain).

Date: 30. October 2023 | Valid until: 30. October 2025

Verified by:

Julie Marie Vejsgaard Larsen, LCA & EPD Consultant

Verification based on report: Validation of CO₂ calculation of 9 categories of Kompan product line, version 1.0, prepared by: Bureau Veritas HSE, Denmark: Julie M. V. Larsen.

Publication date: 30. October 2023

By Bureau Veritas HSE
www.bureauveritas.dk
+45 7731 1000

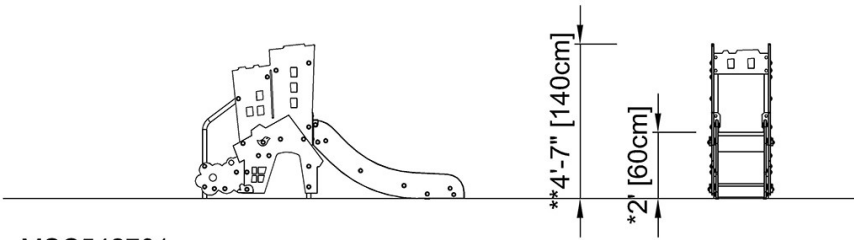
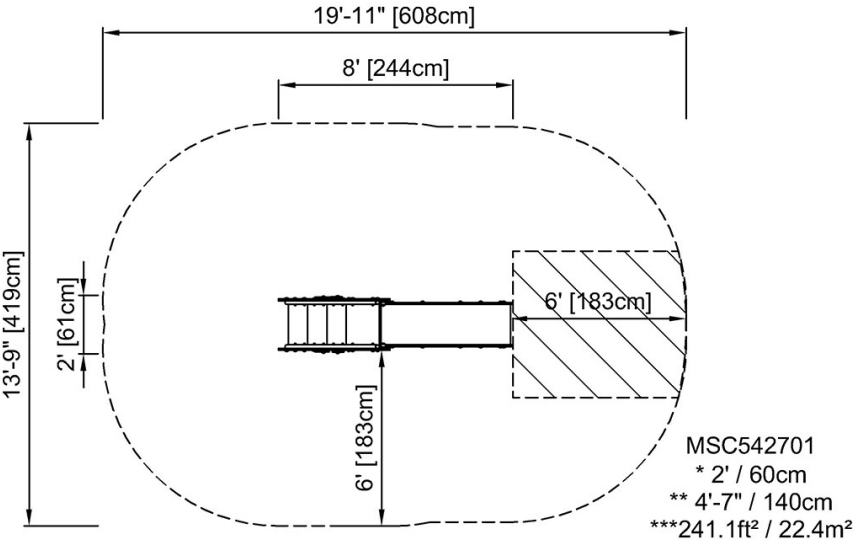


Toddlers Town

MSC5427

* Max fall height | ** Total height | *** Safety surfacing area

* Max fall height | ** Total height



MSC542701

[Click to see TOP VIEW](#)

[Click to see SIDE VIEW](#)