



Four Tower w. Climbing Wall, Tunnel & Bridges

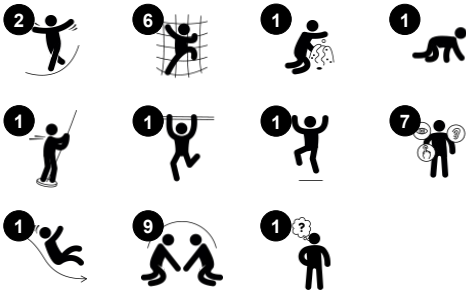
KPL4006



This four-tower play structure offers varied creative play for a lot of children. The first tower can be reached via an inclined climbing wall with steps offering a supported climb up to a higher level. From here a tunnel leads to the play net up to the next level. The fireman's pole offers a fast egress to the ground. Alternatively, a bridge can be crossed from where a classic

slide can take the child to the ground or the child can pass the net with big meshes back to start. The level changes and inclinations of the structure train the child's sense of balance and spatial awareness which are crucial for judging distances in day-to-day life, for instance, when crossing the road.

| | |
|-----------------------------|---|
| Item no. KPL400611-0901 | |
| General Product Information | |
| Dimensions LxWxH | 513x337x304 cm |
| Age group | 2+ |
| Play capacity (users) | 24 |
| Colour options |   |



Four Tower w. Climbing Wall, Tunnel & Bridges

KPL4006



Net bridge, inclined

Physical: walking the open net up or downwards develops balance, spatial awareness and cross coordination. **Social-Emotional:** interaction with children outside, socialising. Cooperation and consideration, e.g. when passing others.



Fireman's pole

Physical: supports coordination, arm and core muscles. Landing strengthens bone density. **Social-Emotional:** turn-taking and risk-taking. **Cognitive:** young children develop their understanding of space, speed and distances when gliding down fast.



Tunnel

Physical: the children crawl through the tunnel, developing motor skills such as cross-body coordination and proprioception. **Social-Emotional:** turn-taking when passing each other.



Climbing net

Physical: children develop cross-body coordination and muscle strength when climbing. The big mesh supports proprioception and spatial awareness. **Social-Emotional:** the big meshes allow for more children to sit together and talk.



Rock climber

Physical: supports cross coordination and leg, arm and hand strength. **Social-Emotional:** the inclination makes climbing feel secure, especially for younger children.



Slide

Physical: develops spatial awareness, sense of balance and trains core muscles when sitting upright going down. **Social-Emotional:** empathy stimulated by turn-taking. **Cognitive:** young children develop their understanding of space, speed and distances when sliding down.



Ring game

Social-Emotional: cooperating from both sides on running rings up and down trains turn-taking and cooperation skills. **Cognitive:** figuring out how to turn the ring to make it fit the holes and move up or down trains logical skills. **Creative:** leaving rings in new positions leaves a mark in the playground.

Four Tower w. Climbing Wall, Tunnel & Bridges

KPL4006



Panels of 19mm EcoCore™. EcoCore™ is a highly durable, eco-friendly material, which is not only recyclable after use but also consists of a core produced from 100% recycled material.



The main tower posts are available in two types of material: European pine wood posts pressure impregnated Class 3 with Tanalith E preservative, or aluminium with an anodised surface treatment.



Floors and panel activities are manufactured from high-pressure laminate HPL with a thickness 17.8mm and non-skid surface texture.

Item no. KPL400611-0901

Installation Information

| | |
|--------------------------|--------------------------|
| Max. fall height | 118 cm |
| Safety surfacing area | 40.2 m² |
| Total installation time | 23.0 |
| Excavation volume | 2.22 m³ |
| Concrete volume | 0.00 m³ |
| Footing depth (standard) | 90 cm |
| Shipment weight | 650 kg |
| Anchoring options | In-ground ✓ Surface ✓ |

Warranty Information

| | |
|-----------------------|----------|
| Aluminum | 15 years |
| EcoCore HDPE | Lifetime |
| Pinewood | 10 years |
| Ropes & Nets | 10 years |
| Spare Parts Guarantee | 10 years |



The large hollow components are made of 100% recyclable PE. The roof displayed is moulded in one piece with minimum 5,5mm wall thickness to ensure high durability in all climates around the world.



Slides are available in three different materials: moulded on piece PE slides, combined EcoCore™ sides and stainless steel slide bed t=2mm. Full stainless steel AISI304 t=2mm.



Climbing nets are made of UV-stabilised PP rope with inner steel cable reinforcement. The rope is induction treated to obtain maximum fixation between steel and rope, which provides excellent wear and tear resistance. All rope connectors are made of 100% recyclable PA material.



Sustainability Data

KPL4006



| Cradle to Gate A1-A3 | Total CO ₂ emission | CO ₂ e/kg | Recycled materials |
|----------------------|--------------------------------|-------------------------|--------------------|
| | kg CO ₂ e | kg CO ₂ e/kg | % |
| KPL400611-0901 | 748.30 | 1.51 | 32.90 |

The overall framework applied for these factors is the Environmental Product Declaration (EPD), which quantifies "environmental information on the life cycle of a product and enable comparisons between products fulfilling the same function" (ISO, 2006). This follows the structure and applies a Life-Cycle Assessment approach to the entire Product stage from raw material through manufacturing (A1-A3))

KOMPAN
Let's play

Kompan A/S

C.F. Tietgens Boulevard 32C
DK-5220 Odense SØ
Denmark



Verification of CO₂ calculation of: Play systems



Data version no. 2023-10-05

The CO₂ calculation and data are in compliance with the principles of a carbon footprint impact according to the GHG protocol (Greenhouse Gas Protocol), Scope 3, cradle to gate related to all individual components in the product category: "Play systems" represented by item no.: PCM200321-0950.

(Scope 3 emissions include emission sources in the upstream and downstream value chain).

Date: 30. October 2023 | Valid until: 30. October 2025

Verified by:

Julie Marie Vejsgaard Larsen, LCA & EPD Consultant

Verification based on report: Validation of CO₂ calculation of 9 categories of Kompan product line, version 1.0, prepared by: Bureau Veritas HSE, Denmark: Julie M. V. Larsen.

Publication date: 30. October 2023

By Bureau Veritas HSE
www.bureauveritas.dk
+45 7731 1000

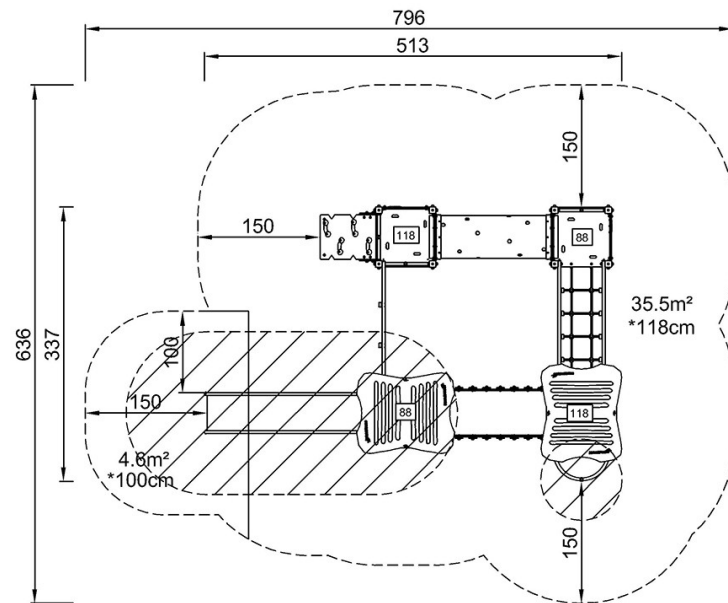


Four Tower w. Climbing Wall, Tunnel & Bridges

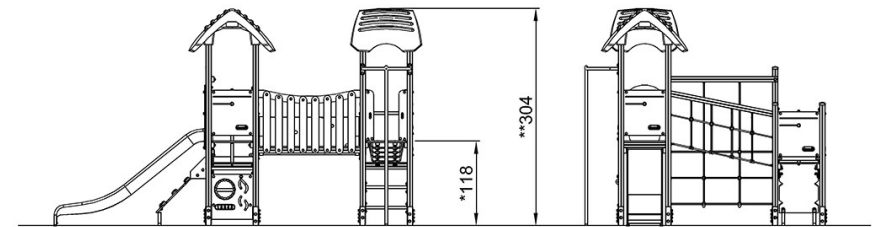
KPL4006

* Max fall height | ** Total height | *** Safety surfacing area

* Max fall height | ** Total height



KPL400612
*118cm
**304cm
***40.2m²



KPL400612

[Click to see TOP VIEW](#)

[Click to see SIDE VIEW](#)