



Mule

NRO101



What sets this springtoy apart from others is its beautiful hand-crafted Robinia timber. Children can touch and learn what natural timber looks and feels like, all the while having fun on what is a playground classic.

Item no. NRO101-0401	
General Product Information	
Dimensions LxWxH	44x75x65 cm
Age group	3+
Play capacity (users)	1
Colour options	 



Mule

NRO101



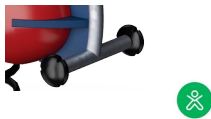
Handhold

Physical: opens more hold positions and ensures good grip, necessary for rocking intensely which trains hand and arm muscles.



Double seating option

Social-Emotional: rocking together supports cooperation skills, and physical contact with others is great for children's wellbeing, measurable in lower cortisol levels.



Foot support

Physical: the footrest supports intensive rocking, which stimulates the senses of balance and space, fundamental for managing the world securely.



Rocking spring

Physical: response to movements adds to spatial awareness and sense of balance which are fundamental motor skills.

Cognitive: trains the understanding of cause and effect: when I move my body, the spring responds with movement.

Mule

NRO101



All organic Robinia products by KOMPAN are made of Robinia wood which is sourced from sustainable plantation farms. On request it can be supplied as FSC® Certified (FSC® C004450).

Footsteps are made of high-quality stainless steel and equipped with moulded on PUR footrests. The PUR footrests are designed with grooves to make the surface slip-resistant.

KOMPAN's springs are manufactured from high-quality spring steel. The springs are cleaned by phosphating before being painted with epoxy primer and polyester powder coating. The springs are fixed by unique anti-pinch fittings for maximum safety and longevity.

Item no. NRO101-0401	
Installation Information	
Max. fall height	60 cm
Safety surfacing area	6.8 m²
Total installation time	2.1
Excavation volume	0.16 m³
Concrete volume	0.00 m³
Footing depth (standard)	41 cm
Shipment weight	51 kg
Anchoring options	In-ground ✓ Surface ✓
Warranty Information	
Robinia Wood	15 years
Spare Parts Guarantee	10 years
Springs	5 years
Stainless Steel Components	Lifetime



The Robinia wood can be supplied as untreated raw wood or painted with a brown coloured transparent pigment that maintains the golden wood colour of the wood.



Sustainability Data

NRO101



Cradle to Gate A1-A3	Total CO ₂ emission	CO ₂ e/kg	Recycled materials
	kg CO ₂ e	kg CO ₂ e/kg	%
NRO101-0401	61.10	1.32	18.20

The overall framework applied for these factors is the Environmental Product Declaration (EPD), which quantifies "environmental information on the life cycle of a product and enable comparisons between products fulfilling the same function" (ISO, 2006). This follows the structure and applies a Life-Cycle Assessment approach to the entire Product stage from raw material through manufacturing (A1-A3))

Kompan A/S
C.F. Tietgens Boulevard 32C
DK-5220 Odense SØ
Denmark



Verification of CO₂ calculation of: Nature play



Data version no. 2023-10-05

The CO₂ calculation and data are in compliance with the principles of a carbon footprint impact according to the GHG protocol (Greenhouse Gas Protocol), Scope 3, cradle to gate related to all individual components in the product category: "Nature play" represented by item no.: NRO409-0621.

(Scope 3 emissions include emission sources in the upstream and downstream value chain).

Date: 30. October 2023 | Valid until: 30. October 2025
Verified by:

Julie Marie Vejsgaard Larsen, LCA & EPD Consultant

Verification based on report: Validation of CO₂ calculation of 9 categories of Kompan product line, version 1.0, prepared by: Bureau Veritas HSE, Denmark: Julie M. V. Larsen.

Publication date: 30. October 2023

By Bureau Veritas HSE
www.bureauveritas.dk
+45 7731 1000

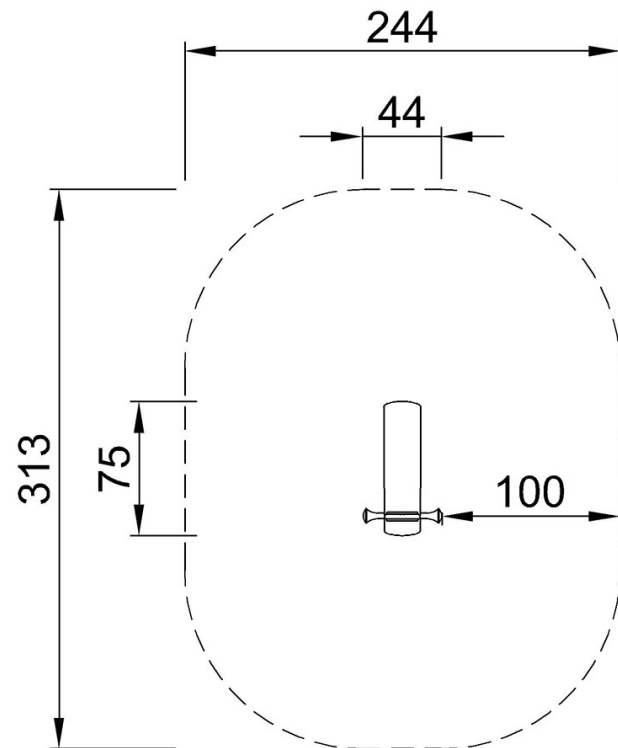


Mule

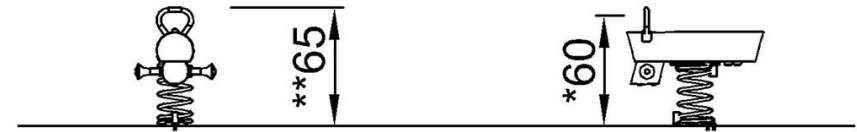
NRO101

* Max fall height | ** Total height | *** Safety surfacing area

* Max fall height | ** Total height



NRO101
*60cm
**65cm
***6.8m²



NRO101

[Click to see TOP VIEW](#)

[Click to see SIDE VIEW](#)