

Toddlers Town

MSC5427

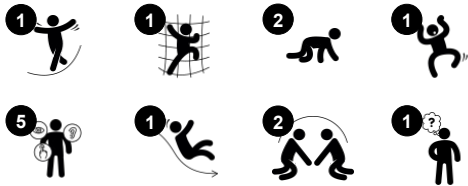


The Toddler's Town is a favorite play-ground activity that attracts children to being active and interactive in a thrilling way. The Toddler's Town offers a den under the slide platform, inviting meetings and socializing, the beginning of the first friendships. The stairway is wide and can be accessed crawling, too. This trains children's cross-coordination, an important

motor skill that among others support later reading skills. Sliding is a great thrill for the youngest. It additionally trains their core muscles, sitting upright while sliding down. Sliding trains the sense of balance and the spatial understanding, too. These skills are important in navigating the world securely. They are the fundament of all motor skills and

thus a fundament in physical confidence in the child. The house theme is familiar and inspires stories, developing language.

产品编号 MSC542701-3418P	
产品信息概览	
长宽高尺寸	244x61x140 cm
适用年龄段	1+
容纳人数	2
颜色选择	



Toddlers Town

MSC5427



滑梯

身体素质：玩滑梯可以培养空间感和平衡感。此外，在直立向下坐时，核心肌肉也能得到锻炼。**社交情感：**轮流玩耍时可激发同理心。**认知能力：**幼儿在快速滑下时可训练对空间、速度和距离的理解。



Stairway

身体素质：climbing the stairs supports cross coordination as well as arm and leg muscles.
社交情感：为中途休息和看护人提供空间。



Themed element

认知能力：set a tangible theme and thus spur dramatic play. Dramatic play is a great trainer of language skills.



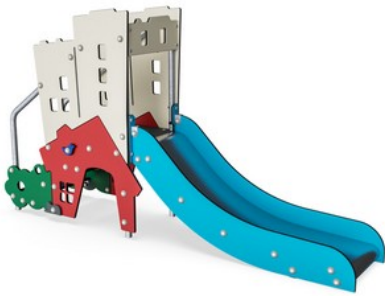
Den

身体素质：在开口处爬行可以训练空间意识。
社交情感：封闭的空间适合两三个孩子一起玩耍。

Toddlers Town

MSC5427

KOMPAN
Let's play



19 毫米 EcoCore™ 面板。EcoCore™ 是一种高度耐用、环保的材料，不仅在使用后可回收利用，而且还包含由 100 % 食品包装可循环材料制成的芯。



根据 EN 438-6，所有地板均由高压层压 HPL 制成，厚度为 17.8mm，表面防滑。KOMPAN HPL 具有很高的耐磨强度，可确保在所有气候下均具有较长的使用寿命。

钢表面内外均采用无铅热镀锌镀层，户外耐蚀性高，维护成本低。



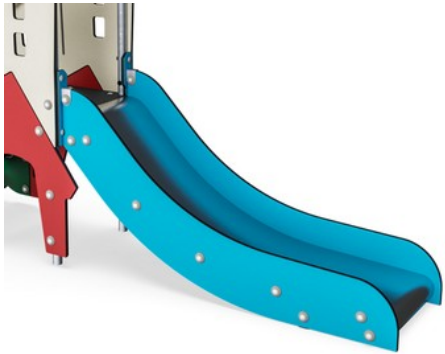
产品编号 MSC542701-3418P

安装信息

最大跌落高度	100 cm
安全面积	14.5 m²
安装总时长	7.3
开挖量	0.17 m³
混凝土使用量	0.00 m³
标准入地深度	60 cm
运输重量	149 kg
固定选项	入地 ✓ 地表 ✓

质保信息

EcoCore HDPE	终身质保
镀锌钢结构	终身质保
HPL 甲板	15 年
承保零部件	10 年

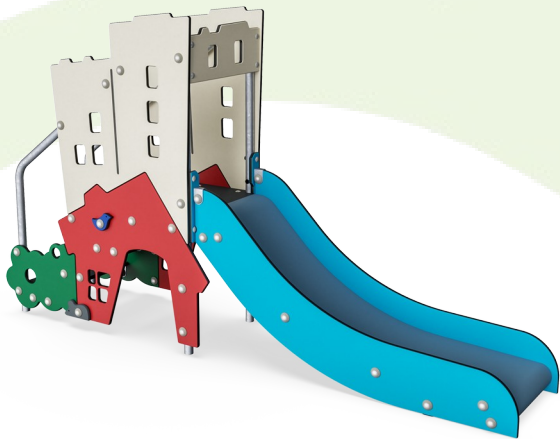


滑梯可选用不同材质：直型成型 PE 或不锈钢滑床 t=2mm。滑梯的侧面由 EcoCore™ 制作。



Sustainability Data

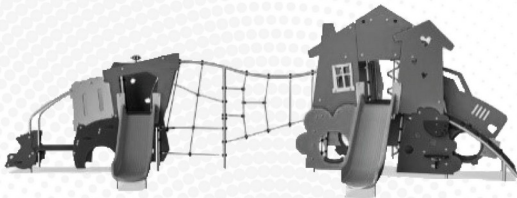
MSC5427



从原材料到成品	CO ₂ 排放总量	CO ₂ 排放量 / 千克	回收的原料
	kg CO ₂ e	kg CO ₂ e/kg	%
MSC542701-3418P	177.60	1.87	62.50

这些因素采用的总体框架为环保产品声明 (EPD)，该声明可量化“产品生命周期的环保信息，并对相同功能的产品进行对比” (ISO, 2006)。在遵循该框架的同时，对从原材料到制造的整个产品阶段 (A1-A3) 应用生命周期评估法。

Verification of CO₂ calculation of: Themed play systems



Data version no. 2023-10-05

The CO₂ calculation and data are in compliance with the principles of a carbon footprint impact according to the GHG protocol (Greenhouse Gas Protocol), Scope 3, cradle to gate related to all individual components in the product category: "Themed play systems" represented by item no.: MSC641100-3717P.

(Scope 3 emissions include emission sources in the upstream and downstream value chain).

Date: 30. October 2023 | Valid until: 30. October 2025

Verified by:

Julie Marie Vejsgaard Larsen, LCA & EPD Consultant

Verification based on report: Validation of CO₂ calculation of 9 categories of Kompan product line, version 1.0, prepared by: Bureau Veritas HSE, Denmark: Julie M. V. Larsen.

Publication date: 30. October 2023



By Bureau Veritas HSE
www.bureauveritas.dk
+45 7731 1000



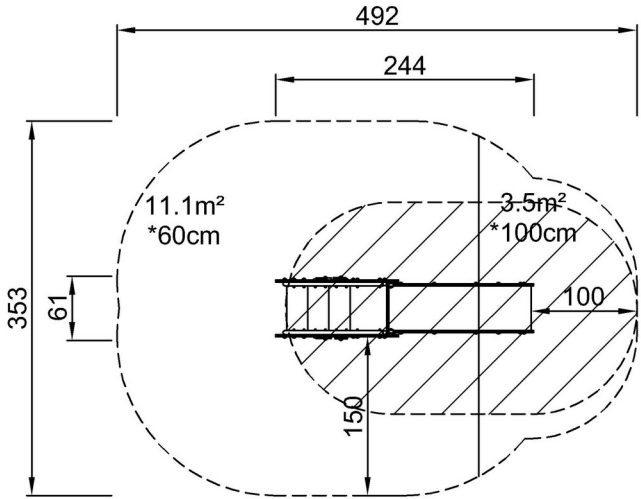
Toddlers Town

MSC5427

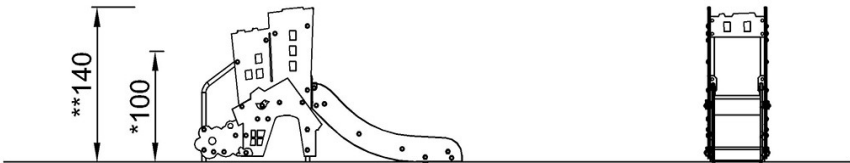


最大跌落高度 | 总高度 | 安全区域

最大跌落高度 | 总高度



MSC542701
*100cm
**140cm
***14.5m²



MSC542701

[点击查看俯视图](#)

[点击查看侧面图](#)