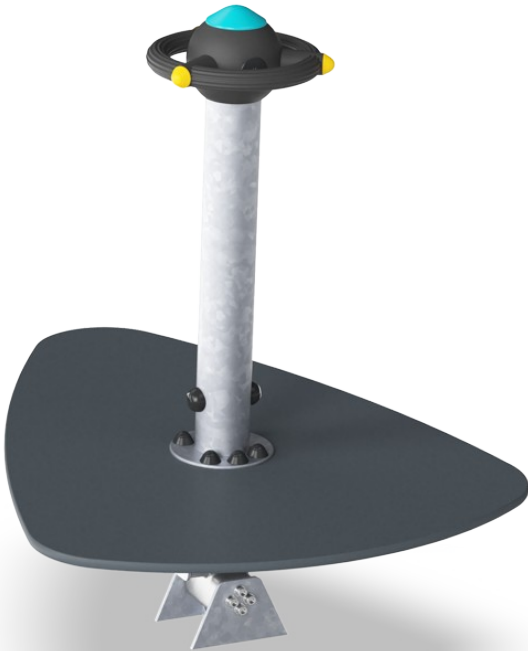


Rock-it

GXY934

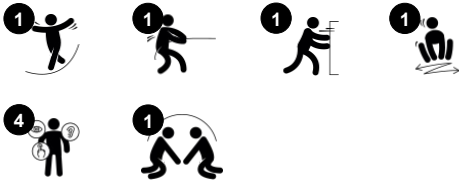


The Rock-it is a wonderful, cooperative play motivator for bigger children. It has room for many and will be used repeatedly by tweens and teens. Thanks to its dense design, users need to cooperate and have eye contact or even physical contact to make the platform rock. This is highly motivating for games of tweens and teens. The efficient hand hold on

the top of the center beam allows for a firm grip. This encourages children to use their upper body muscles, which are often underused in older children who sit still to much. Additionally, leg and core muscles are put to the test by the pulling and pushing to make the Rock-it rock. Tweens love to compare and compete in a friendly way. The Rock-it

invites social play like that, with endless pulling contests. This stimulates negotiation and teamwork, and the ability to win and lose.

Item no. GXY934000-3717	
General Product Information	
Dimensions LxWxH	4'0"x3'2"x3'11"
Age group	5 - 12
Play capacity (users)	8
Color options	



Rock-it

GXY934



Handhold

Physical: the possibility of holding onto more of the handhold ensures a good grip, necessary for spinning intensely. This trains the hand and arm muscles.



Platform

Social-Emotional: Important life skills like courage, self-confidence, consideration and turn-taking are built.



Rocking together

Social-Emotional: the possibility of rocking together develops cooperation skills and consideration of others when rocking.

Rock-it

GXY934



The steel surfaces of GALAXY are hot dip galvanized inside and outside with lead free zinc. The galvanization has excellent corrosion resistance in outside environments and requires low maintenance.

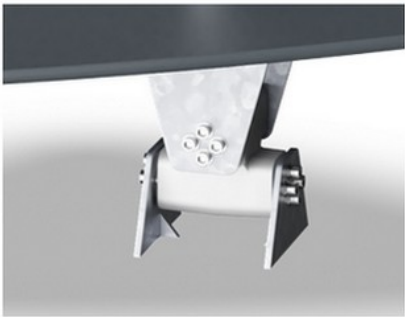


The upper round handle is made with a galvanized steel insert and covered with soft PUR rubber with grooves that ensures good handhold while rocking.



The deck is made of High Pressure Laminate HPL with a thickness 17.8mm and non skid surface texture according to EN 438-6. KOMPAN HPL has high wearing strength to ensure long lifetime in all climates.

Item no. GXY934000-3717	
Installation Information	
Max. fall height	2'0"
Safety surfacing area	241ft²
Total installation time	2.1
Excavation volume	0.5yd³
Concrete volume	0.39yd³
Footing depth (standard)	2'11"
Shipment weight	249lbs
Anchoring options	In-ground ✓ Surface ✓
Warranty Information	
Hot dip galvanized steel	Lifetime
PUR components	10 Years
Spare Parts Availability	10 Years



The rocking movement over two axis is made by heavy duty scaled ROSTA torsion spring element. The two ROSTA elements works without any noise and are maintenance-free.



Galaxy products are available in different color combinations with either hot dip galvanized steel surface treatment or optional with powder top finish of selected steel components. Colors of the activities are adjusted to support the individual color combination.

Elevated activities 0	Accessible elevated activities	Accessible ground level activities	Accessible ground level play types
Present	0	1	1
Required	0	1	1



Sustainability Data

GXY934



Cradle to Gate A1-A3	Total CO ₂ emission	CO ₂ e/kg	Recycled materials
	kg CO ₂ e	kg CO ₂ e/kg	%
GXY934000-3717	214.90	2.67	23.10

The overall framework applied for these factors is the Environmental Product Declaration (EPD), which quantifies "environmental information on the life cycle of a product and enable comparisons between products fulfilling the same function" (ISO, 2006). This follows the structure and applies a Life-Cycle Assessment approach to the entire Product stage from raw material through manufacturing (A1-A3))

Verification of CO₂ calculation of: Freestanding play equipment



Data version no. 2023-10-05

The CO₂ calculation and data are in compliance with the principles of a carbon footprint impact according to the GHG protocol (Greenhouse Gas Protocol), Scope 3, cradle to gate related to all individual components in the product category: "Freestanding play equipment" represented by item no.: GXY916012-3417.

(Scope 3 emissions include emission sources in the upstream and downstream value chain).

Date: 30. October 2023 | Valid until: 30. October 2025

Verified by:

Julie Marie Vejsgaard Larsen, LCA & EPD Consultant

Verification based on report: Validation of CO₂ calculation of 9 categories of Kompan product line, version 1.0, prepared by: Bureau Veritas HSE, Denmark: Julie M. V. Larsen.

Publication date: 30. October 2023

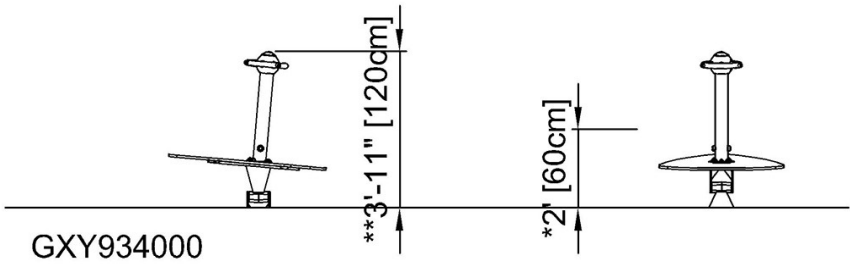
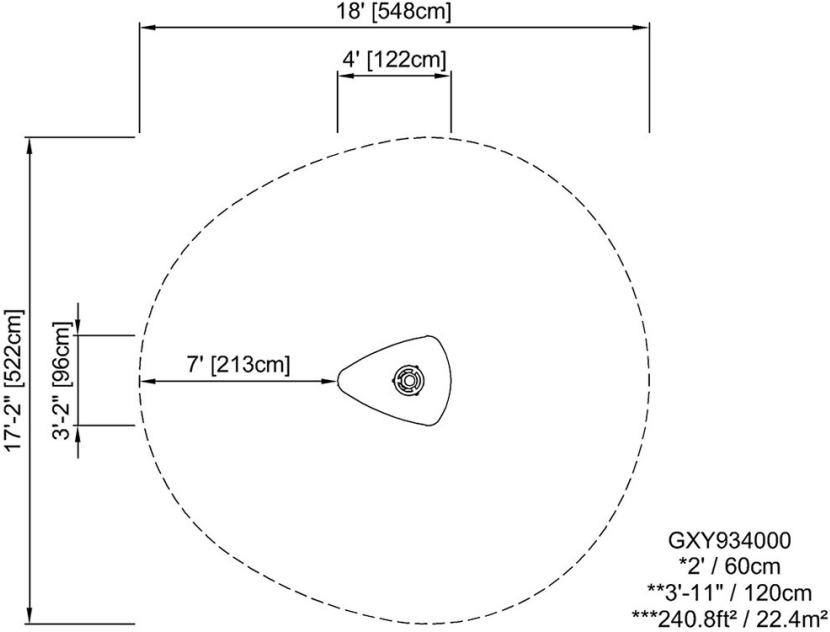


By Bureau Veritas HSE
www.bureauveritas.dk
+45 7731 1000



* Max fall height | ** Total height | *** Safety surfacing area

* Max fall height | ** Total height



[Click to see TOP VIEW](#)

[Click to see SIDE VIEW](#)