

Combi 3

FSW103



The Combi 3 is the complete street workout experience, featuring all essential elements while inviting users to creatively find their way from one side to the other. The Combi 3 is also perfect for parkour, allowing for an infinite range of movement. The Pull Up Bar is made from solid steel and has a diameter of Ø32 mm, an ideal size for both men and women to have

a good grip. As the Bar hangs at a height of 233 cm everyone will be able to hang freely and use the bar for a variety of Pull Ups. The overhead ladder is wide and high to ensure anyone can hang and move freely with four stepping pods at different heights to ensure that everyone can reach the overhead ladder

Item no. FSW10301-0901

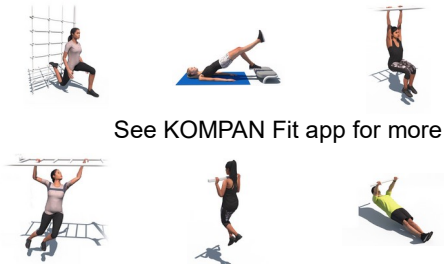
General Product Information

Dimensions LxWxH 726x434x240 cm

Age group 13+

Play capacity (users) 8

Colour options



Combi 3

FSW103



The post is made of Ø101.6 x 2mm, pre-galvanised carbon steel and powder coated which is a great protection solution for all climate conditions.



The connectors are made of die-cast aluminium, specially alloyed for the outdoor environments and heavy usage. The screws attaching the connectors are stainless steel and protected by zinc washers.



All bars intended for pull ups are made of solid, ø32mm x 138m, hot-dip galvanised, S235JR steel bars. This diameter gives the right grip for all users.



The handles offer four different heights to place the hands or feet; 48cm, 76cm, 104cm and 132cm, creating the opportunity to scale the difficulty of the exercise.



The information sign is made of a PA6 (Polyamide) and shows the most relevant exercises. When users scan the QR code, this will link them to an animated illustration of the exercise and offers the possibility of downloading the KOMPAN Fitness App, which is programmed with many more exercise alternatives.



The ropes are made of UV-stabilised PES with inner steel cable reinforcement. The rope is induction treated in order to create a strong connection between steel and rope which leads to good wear resistance.

Item no. FSW10301-0901

Installation Information

Max. fall height	133 cm
Safety surfacing area	41.2 m²
Total installation time	8.6
Excavation volume	0.76 m³
Concrete volume	0.43 m³
Footing depth (standard)	90 cm
Shipment weight	314 kg
Anchoring options	In-ground ✓ Surface ✓

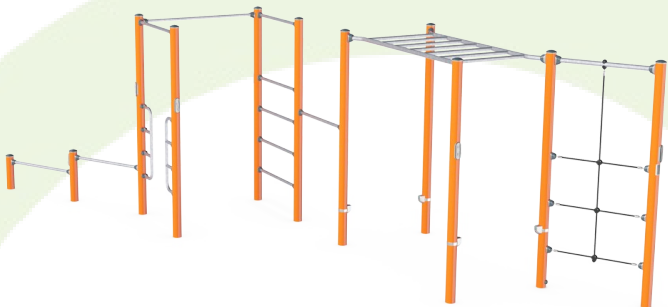
Warranty Information

Connectors	10 years
Galvanised Steel	Lifetime
Post	10 years
Ropes & Nets	10 years
Spare Parts Guarantee	10 years



Sustainability Data

FSW103



Cradle to Gate A1-A3	Total CO ₂ emission	CO ₂ e/kg	Recycled materials
	kg CO ₂ e	kg CO ₂ e/kg	%
FSW10301-0901	849.70	3.52	48.00

The overall framework applied for these factors is the Environmental Product Declaration (EPD), which quantifies "environmental information on the life cycle of a product and enable comparisons between products fulfilling the same function" (ISO, 2006). This follows the structure and applies a Life-Cycle Assessment approach to the entire Product stage from raw material through manufacturing (A1-A3))

Kompan A/S
C.F. Tietgens Boulevard 32C
DK-5220 Odense SØ
Denmark



Verification of CO₂ calculation of: Fitness



Data version no. 2023-10-05

The CO₂ calculation and data are in compliance with the principles of a carbon footprint impact according to the GHG protocol (Greenhouse Gas Protocol), Scope 3, cradle to gate related to all individual components in the product category: "Fitness" represented by item no.: FAZ10100-0900.

(Scope 3 emissions include emission sources in the upstream and downstream value chain).

Date: 30. October 2023 | Valid until: 30. October 2025
Verified by:

Julie Marie Vejsgaard Larsen, LCA & EPD Consultant

Verification based on report: Validation of CO₂ calculation of 9 categories of Kompan product line, version 1.0, prepared by: Bureau Veritas HSE, Denmark: Julie M. V. Larsen.

Publication date: 30. October 2023

By Bureau Veritas HSE
www.bureauveritas.dk
+45 7731 1000

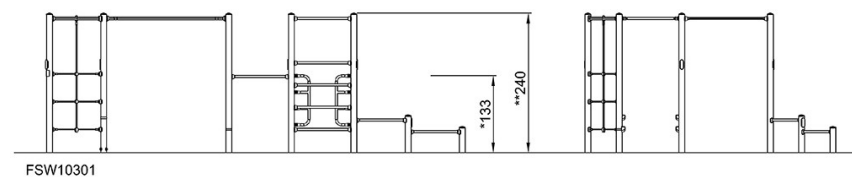
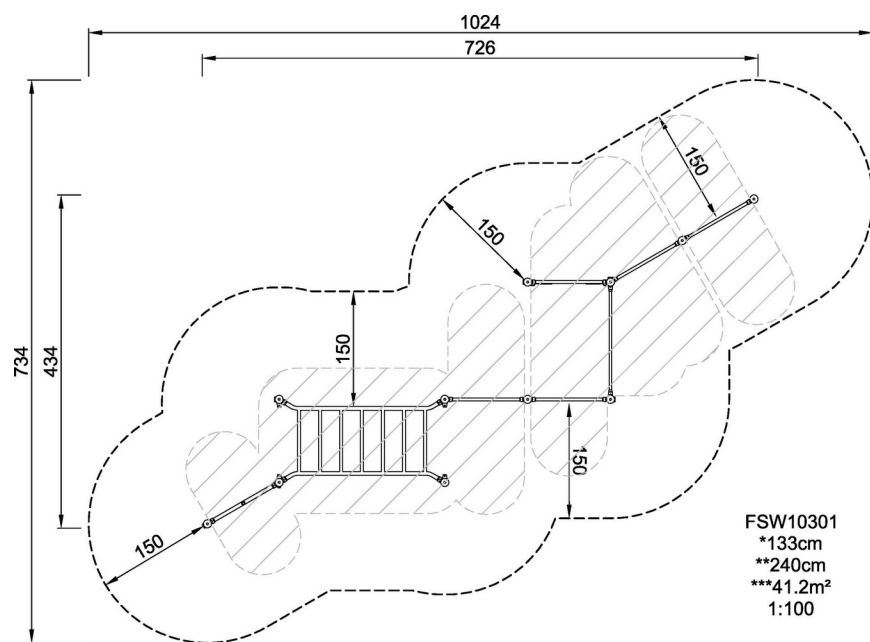


Combi 3

FSW103

* Max fall height | ** Total height | *** Safety surfacing area

* Max fall height | ** Total height



[Click to see TOP VIEW](#)

[Click to see SIDE VIEW](#)