

Meadow Trail

CRP200601



Item no. CRP200601-0901

General Product Information

Dimensions LxWxH	1053x427x341 cm
Age group	2+
Play capacity (users)	25
Colour options	  



The fun Meadow Trail hugely attracts children to come play, again and again. Climbing, crawling, balancing, sliding, swaying, meeting and imaginative play all find room in the Meadow Trail. Cute play panels spur children's imagination, with curtains to draw and houses to visit. Dramatic play is one of the best stimulations of children's language

development. The richly varied active play opportunities train children's motor skills and muscles, building up the confidence of the youngest in moving and navigating the world securely. The nets and the climbing, especially in the Hurdle net and the Spider net, support cross-body coordination and the incorporation of space, shapes and measures that are

fundamental for mathematical thinking. The rich number of gathering point and the many varied movements supported in play makes the Meadow Trail an absolute favourite of toddlers and their friends and families in the playground.



Meadow Trail

CRP200601



Tunnel

Physical: the children crawl through the tunnel, developing their cross-body coordination which is a fundament for later life reading skills. **Social-Emotional:** turn-taking skills are trained when passing each other. **Cognitive:** understanding space, shapes and measures when crawling through the tunnel.



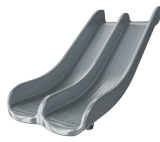
Sphere and window with curtains

Physical: fine motor control is trained when children pull the curtains. **Social-Emotional:** social interaction between the two sides support turn-taking and cooperation skills. **Cognitive:** understanding of object permanence when playing games such as peek-a-boo. Dramatic play support, which encourages language skills. **Creative:** leaving a mark, deciding how to place the sphere or curtains.



Forest spider net

Physical: cross-coordination, balance and spatial awareness are trained when climbing the net. All major muscles are used when crossing the net and using the middle rope as a swaying support. **Social-Emotional:** the big meshes allow for more children to be seated together, sharing. Children cooperate and turn-take when passing each other. **Cognitive:** 'Cause and effect' understanding is supported by the bouncing effect of the movement of others.



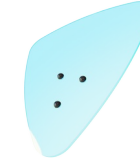
Double slide

Physical: develops spatial awareness, sense of balance and trains core muscles when sitting upright going down. **Social-Emotional:** invites socialising, supports parent-child and peer-to-peer play. **Cognitive:** young children train their understanding of space, speed and distances when sliding down.



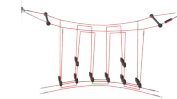
Binoculars

Cognitive: the binoculars promote dramatic play, a great trainer of language and communication skills. **Creative:** the binoculars can be moved around. Looking through them gives a new perspective on the world.



Colorful dichroic panel

Cognitive: wondering about, understanding and explaining the reasons for the color occurrence support logical thinking skills.



Uneven hurdle bridge

Physical: arm, leg and core muscles are trained when climbing up or through the bridge. Balance, spatial awareness and proprioception are stimulated, motor skills that help children move confidently. **Social-Emotional:** cooperation and turn-taking are supported when passing other children. **Cognitive:** 'Cause and effect' understanding is supported by the bouncing effect of the movement of others.

Meadow Trail

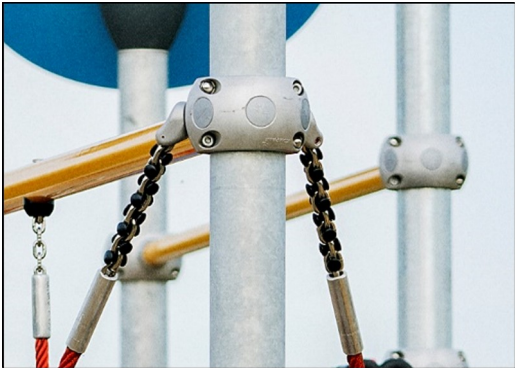
CRP200601



Ropes of UV-stabilized PES rope strands with inner steel cable reinforcement. The polyester yarn is made of +95% Post-consumer materials and is inductively melted onto each strand to obtain excellent wear and tear resistance.



Designed to allow the typical function of rope play structures to move Corocord 'S' clamps are used as universal connections in Corocord products. 8mm stainless steel rods with rounded edges are pressed around the ropes with a special hydraulic press, making them the ideal connector. Our clamps are safe, durable and vandalism-proof.



Corocord smart clamps are carefully designed in every detail to ensure superior flexibility in high quality aluminum material. The smart clamps are attached around the posts with four steel bolts. Not used attachment points are closed with PA caps.



The steel surfaces are hot-dip galvanised inside and outside with lead-free zinc. The galvanisation has excellent corrosion resistance in outside environments and requires low maintenance.



Panels of 19mm EcoCore™. EcoCore™ is a highly durable, eco friendly material, which is not only recyclable after use, but also consists of material produced from +95% recycled post consumer material from food packing waste.



The slides can be chosen in six different colors and three materials: Straight or curved one-piece molded PE slides, made from 33% recycled post-consumer materials in different colours. Combined EcoCore™ sides and stainless-steel. Full stainless steel in one piece design for more vandalism proof solutions.

Item no. CRP200601-0901	
Installation Information	
Max. fall height	88 cm
Safety surfacing area	72.7 m²
Total installation time	34.8
Excavation volume	5.44 m³
Concrete volume	2.50 m³
Footing depth (standard)	90 cm
Shipment weight	1,220 kg
Anchoring options	In-ground ✓ Surface ✓
Warranty Information	
Corocord (Hercules) Rope	10 years
EcoCore HDPE	Lifetime
Hollow PE parts	10 years
Galvanised Steel	Lifetime
Spare Parts Guarantee	10 years

AS
4685
compliant

Sustainability Data

CRP200601



Cradle to Gate A1-A3	Total CO ₂ emission	CO ₂ e/kg	Recycled materials
	kg CO ₂ e	kg CO ₂ e/kg	%
CRP200601-0901	2,226.80	2.56	56.20

The overall framework applied for these factors is the Environmental Product Declaration (EPD), which quantifies "environmental information on the life cycle of a product and enable comparisons between products fulfilling the same function" (ISO, 2006). This follows the structure and applies a Life-Cycle Assessment approach to the entire Product stage from raw material through manufacturing (A1-A3))

Kompan A/S

C.F. Tietgens Boulevard 32C
DK-5220 Odense SØ
Denmark

Validation of CO₂ calculation method
BUREAU VERITAS
HSE Denmark A/S



Verification of CO₂ calculation of: Corocord



Data version no. 2023-10-05

The CO₂ calculation and data are in compliance with the principles of a carbon footprint impact according to the GHG protocol (Greenhouse Gas Protocol), Scope 3, cradle to gate related to all individual components in the product category: "Corocord" represented by item no.: COR314011-1101.

(Scope 3 emissions include emission sources in the upstream and downstream value chain).

Date: 30. October 2023 | Valid until: 30. October 2025

Verified by:

Julie Marie Vejsgaard Larsen, LCA & EPD Consultant

Verification based on report: Validation of CO₂ calculation of 9 categories of Kompan product line, version 1.0, prepared by: Bureau Veritas HSE, Denmark: Julie M. V. Larsen.

Publication date: 30. October 2023

By Bureau Veritas HSE
www.bureauveritas.dk
+45 7731 1000

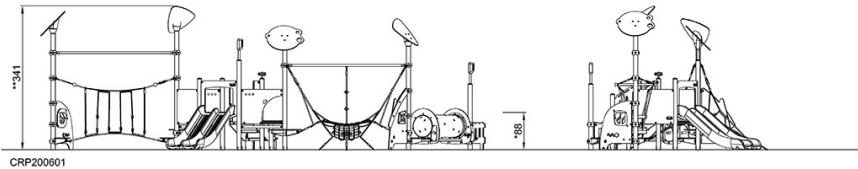
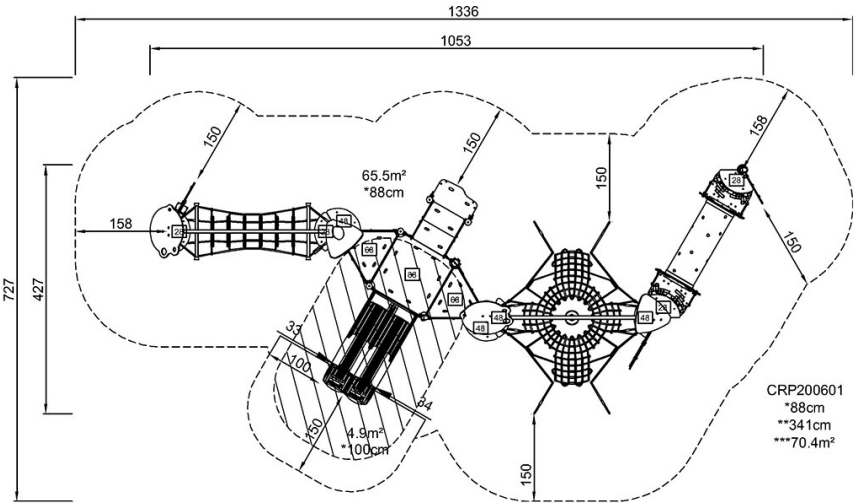


Meadow Trail

CRP200601

* Max fall height | ** Total height | *** Safety surfacing area

* Max fall height | ** Total height



[Click to see TOP VIEW](#)

[Click to see SIDE VIEW](#)