

Home & Garden


MSV601

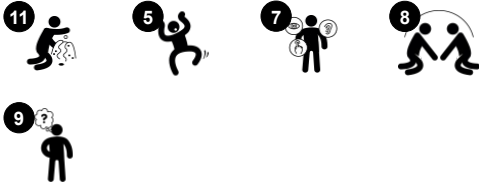


The Home and Garden is a big Wow! for small people. This structure is absolutely loaded with play, and is guaranteed to promote longer playtimes with numerous benefits for children's physical, social-emotional, cognitive, and creative development. The structure has numerous features to engage the senses, and to support social play and cooperation as well.

With rich play on all sides, children will play together to enjoy the fun together. Special features such as the tubes and the pulley fascinate young children because of the cause and effect relationship between what the child does the effect on the moving parts. Pulling and turning activities support fine motor skills, and the structure as a whole supports large

motor movement and development. This is an amazing piece that children will return to again and again.

Item no. MSV60100-0201	
General Product Information	
Dimensions LxWxH	153x120x121 cm
Age group	6m+
Play capacity (users)	8
Colour options	



Home & Garden

MSV601



Bell

Cognitive: understanding cause and effect when ringing bell. **Creative:** leaving a mark in creating a sound rhythm when ringing or knocking the bell.



Funnel

Social-Emotional: trains cooperation and turn-taking as children put materials into the funnel. **Cognitive:** the passing of materials through funnels supports the children's logical thinking and for younger children the understanding of object permanence: that materials don't vanish but run through at the other end.



Pot

Cognitive: the pot can be removed, stimulating cause and effect understanding. Filling and emptying the pot stimulates logical thinking and the understanding of concepts such as empty and full. **Creative:** placing the pot in other areas of the play space in creative ways can support symbolic and creative thinking.



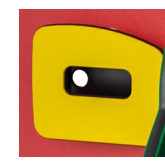
String with knobs

Social-Emotional: turn-taking and cooperation are supported when pulling the string from side to side with friends or caregiver. **Cognitive:** an understanding of object permanence is supported when the knob disappears and reappears when pulled. **Creative:** leaving the knob in different positions can support symbolic and creative thinking.



Flap door

Physical: tactile stimulation from leaning the body through rubber doors. **Cognitive:** suggests a theme and supports dramatic play, which stimulates language and communication skills.



Post box

Social-Emotional: peep-holes and two sided activities support cooperation, turn-taking and social play skills. **Cognitive:** rubber flap adds tactile variation that helps children to understand the characteristics of different materials and their uses. Putting things in post-box stimulates an understanding of object permanence: that objects may still exist when out of sight.



Shoelaces

Cognitive: tactile variation helps children to understand the characteristics of different materials and their uses. Logical thinking and memory skills are supported when tying laces correctly.

Home & Garden

MSV601



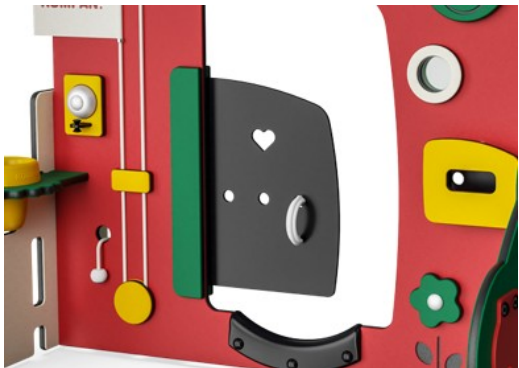
Panels of 19mm EcoCore™. EcoCore™ is a highly durable, eco friendly material, which is not only recyclable after use, but also consists of material produced from +95% recycled post consumer material from food packing waste.



Sand Pipe is made with 33% post-consumer materials in different colors in one-piece design with a wall thickness of minimum 5mm. Material in accordance with the European Standard EN 71-3 and tested for UV stability.



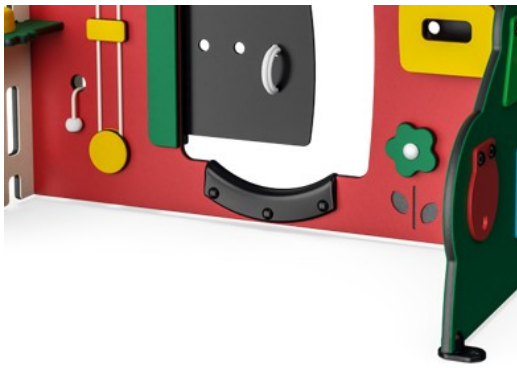
Pots are made of pressure moulded high quality nylon (PA6). PA6 has good wearing and impact strength.



Membranes consist of friction-proof rubberized material of conveyor belt quality with excellent UV resistance. Embedded is a four-layered armouring made of woven polyester. The armouring and the two surface layers result in a total thickness of 7 mm.



Flag is made of polyester. Polyester ensures strong and durable solution.



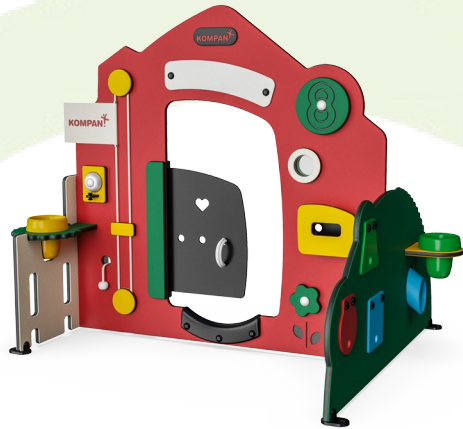
Edge protection is made of PUR. It retains its properties in the temperature range of -30°C to 60°C. Material is UV stabilised.

Item no. MSV60100-0201	
Installation Information	
Max. fall height	0 cm
Safety surfacing area	14.8 m²
Total installation time	5.9
Excavation volume	0.00 m³
Concrete volume	0.00 m³
Footing depth (standard)	0 cm
Shipment weight	47 kg
Anchoring options	Surface ✓
Warranty Information	
EcoCore HDPE	Lifetime
Membrane	2 years
Movable parts	2 years
PUR components	10 years
Spare parts guaranteed	10 years



Sustainability Data

MSV601



Cradle to Gate A1-A3	Total CO ₂ emission	CO ₂ e/kg	Recycled materials
	kg CO ₂ e	kg CO ₂ e/kg	%
MSV60100-0201	52.70	1.20	79.90

The overall framework applied for these factors is the Environmental Product Declaration (EPD), which quantifies "environmental information on the life cycle of a product and enable comparisons between products fulfilling the same function" (ISO, 2006). This follows the structure and applies a Life-Cycle Assessment approach to the entire Product stage from raw material through manufacturing (A1-A3))

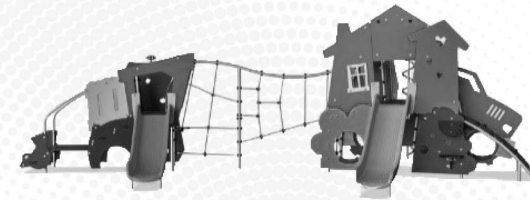
KOMPAN
Let's play

Kompan A/S

C.F. Tietgens Boulevard 32C
DK-5220 Odense SØ
Denmark



Verification of CO₂ calculation of: Themed play systems



Data version no. 2023-10-05

The CO₂ calculation and data are in compliance with the principles of a carbon footprint impact according to the GHG protocol (Greenhouse Gas Protocol), Scope 3, cradle to gate related to all individual components in the product category: "Themed play systems" represented by item no.: MSC641100-3717P.

(Scope 3 emissions include emission sources in the upstream and downstream value chain).

Date: 30. October 2023 | Valid until: 30. October 2025

Verified by:

Julie Marie Vejsgaard Larsen, LCA & EPD Consultant

Verification based on report: Validation of CO₂ calculation of 9 categories of Kompan product line, version 1.0, prepared by: Bureau Veritas HSE, Denmark: Julie M. V. Larsen.

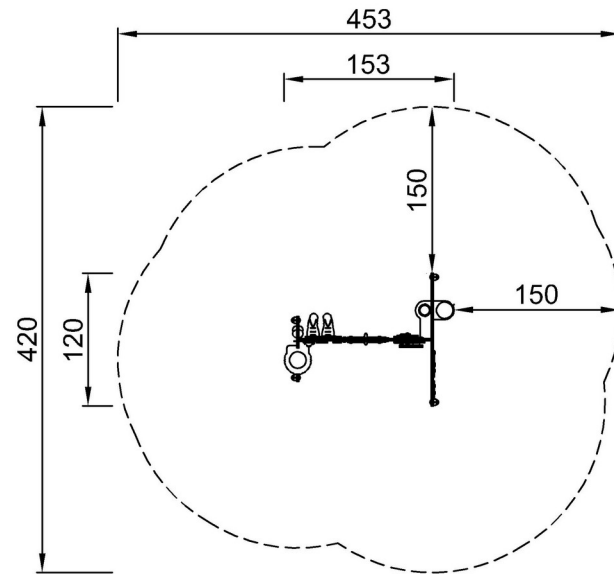
Publication date: 30. October 2023

By Bureau Veritas HSE
www.bureauveritas.dk
+45 7731 1000



* Max fall height | ** Total height | *** Safety surfacing area

* Max fall height | ** Total height



MSV60100-0201

**121cm
***14.8m²



MSV60100-0201

[Click to see TOP VIEW](#)

[Click to see SIDE VIEW](#)