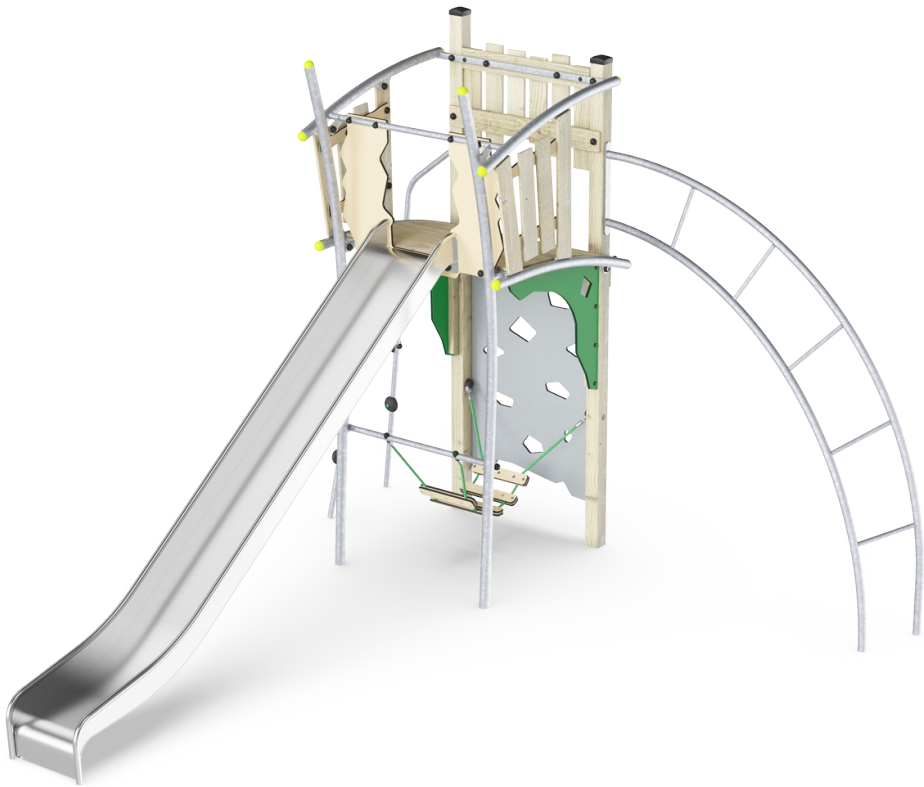


Himalaya

NAT522



The Himalaya is a fun, challenging play event for school-age children. With its world explorer look, it attracts children back for more play over and over. It consists of a beautiful combination of natural pinewood, steel, and curved design. With its impressive variety of thrilling play activities, the Himalaya offers multiple play benefits: the varied climbs via climbing poles

and Jacob's Ladder to the slide train children's agility, balance, and cross-coordination. The variety makes sure that there are ways up and around the Himalaya for bigger and lesser daredevils. The motor skills trained are important for children's physical confidence and security in moving, for instance in the street. The impression of balance and space

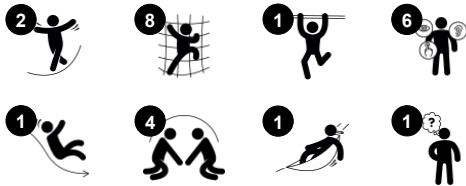
are trained with whizzing down the slide. This balance is fundamental for all other physical skills. The hammock under the platform is a nice point for socialising with friends.



Item no. NAT522-0912

General Product Information

Dimensions LxWxH	381x423x312 cm
Age group	4+
Play capacity (users)	10
Colour options	



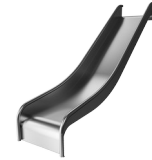
Himalaya

NAT522



Inclined platform

Physical: trains the sense of balance and space. **Social-Emotional:** the room allows for more children being together



Slide

Physical: develops spatial awareness, sense of balance and trains core muscles when sitting upright going down. **Social-Emotional:** empathy stimulated by turn-taking.



Jacob's ladder

Physical: cross coordination and spatial awareness as well as upper body muscles when hanging with arms. **Social-Emotional:** turn-taking and cooperation. **Cognitive:** logical thinking when going from 2nd to 3rd step, changing feet.



Climbing wall

Physical: develops children's cross coordination, eye-hand coordination, and muscle strength when climbing. **Social-Emotional:** two-sided climb invites cooperation.



Hammock

Physical: coordination and sense of balance when swaying. **Social-Emotional:** meeting, pushing friends gently back and forth, turn-taking.



Climbing pole

Physical: develops children's cross coordination, eye-hand coordination and muscle strength when climbing up or down. **Social-Emotional:** turn-taking and self-regulation are trained, both important life skills.

Himalaya

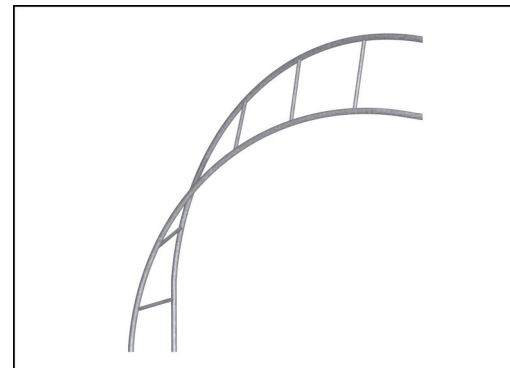
NAT522



Posts and boards are made of pine wood from sustainable European sources. The wood is pressure impregnated Class 3 with Tanalith E. On request it can be supplied as FSC® Certified (FSC® C004450).



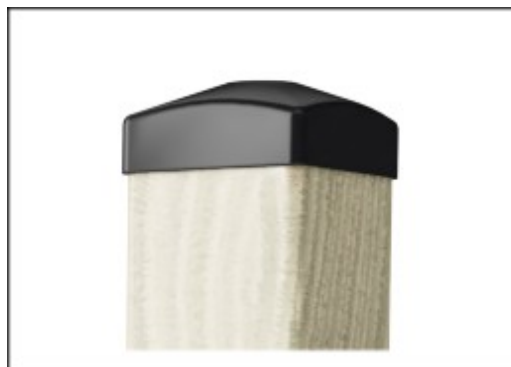
Panels of 19mm EcoCore™. EcoCore™ is a highly durable, eco-friendly material, which is not only recyclable after use but also consists of a core produced from 100% recycled material.



The steel surfaces are hot-dip galvanised inside and outside with lead-free zinc. The galvanisation has excellent corrosion resistance in outside environments and requires low maintenance.



Corocord ropes of UV-stabilized PES rope strands with inner steel cable reinforcement. The polyester yarn is made from +95% post-consumer materials and is inductively melted onto each strand. PES has high strength with excellent resistance to abrasion and UV radiation. The hammock boards are made of EcoCore HDPE material made from +95% Post-consumer materials.



The post end caps are made of injection molded high quality nylon (PA6). PA6 has good wearing and impact strength and is UV stabilized. The end caps protect vertical placed posts to ensure long lifetime.



The slide is manufactured from high-quality stainless steel AISI 304. The steel is cleaned by a total pickling process after manufacturing to ensure smooth and clean gliding surfaces.

Item no. NAT522-0912

Installation Information

Max. fall height	243 cm
Safety surfacing area	34.0 m²
Total installation time	12.2
Excavation volume	1.00 m³
Concrete volume	0.15 m³
Footing depth (standard)	90 cm
Shipment weight	501 kg
Anchoring options	In-ground ✓ Surface ✓

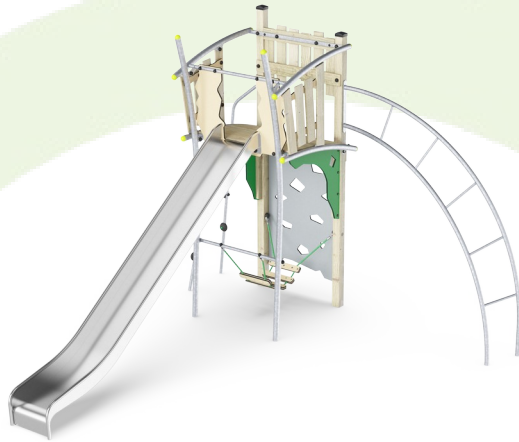
Warranty Information

EcoCore HDPE	Lifetime
Galvanised Steel	Lifetime
Pinewood	10 years
Ropes & Nets	10 years
Spare Parts Guarantee	10 years



Sustainability Data

NAT522



Cradle to Gate A1-A3	Total CO ₂ emission	CO ₂ e/kg	Recycled materials
	kg CO ₂ e	kg CO ₂ e/kg	%
NAT522-0912	756.20	2.13	45.50

The overall framework applied for these factors is the Environmental Product Declaration (EPD), which quantifies "environmental information on the life cycle of a product and enable comparisons between products fulfilling the same function" (ISO, 2006). This follows the structure and applies a Life-Cycle Assessment approach to the entire Product stage from raw material through manufacturing (A1-A3))

Kompan A/S

C.F. Tietgens Boulevard 32C
DK-5220 Odense SØ
Denmark



Verification of CO₂ calculation of: Nature play



Data version no. 2023-10-05

The CO₂ calculation and data are in compliance with the principles of a carbon footprint impact according to the GHG protocol (Greenhouse Gas Protocol), Scope 3, cradle to gate related to all individual components in the product category: "Nature play" represented by item no.: NR0409-0621.

(Scope 3 emissions include emission sources in the upstream and downstream value chain).

Date: 30. October 2023 | Valid until: 30. October 2025

Verified by:

Julie Marie Vejsgaard Larsen, LCA & EPD Consultant

Verification based on report: Validation of CO₂ calculation of 9 categories of Kompan product line, version 1.0, prepared by: Bureau Veritas HSE, Denmark: Julie M. V. Larsen.

Publication date: 30. October 2023

By Bureau Veritas HSE
www.bureauveritas.dk
+45 7731 1000

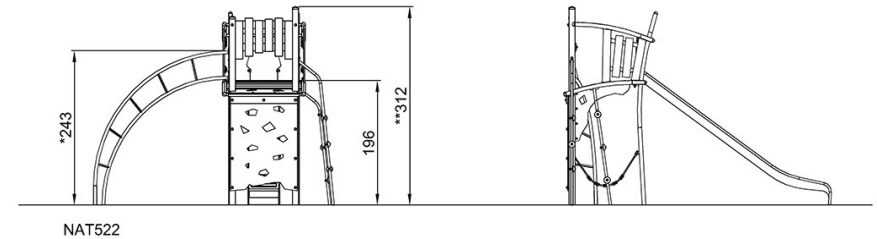
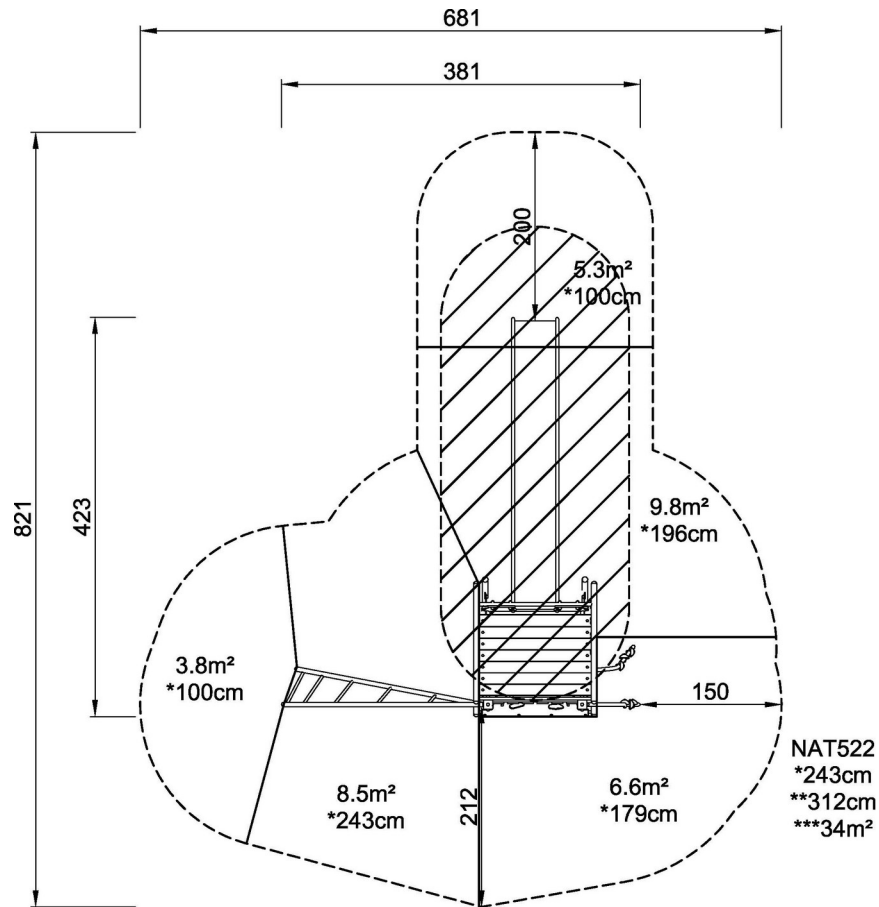


Himalaya

NAT522

* Max fall height | ** Total height | *** Safety surfacing area

* Max fall height | ** Total height



[Click to see TOP VIEW](#)

[Click to see SIDE VIEW](#)