

Observer

NAT526

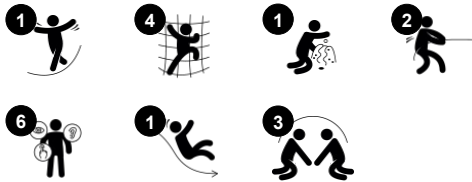


With its multiple platforms and climbs, the Observer attracts world explorers among school age children. The variety of thrilling climbs and crawls via nets, steps, ladders, horizontal and tilted floors and climbing tubes stimulate children's balance and cross-coordination, and the proprioception: The variety of inclined, straight, swaying and firm

climbs provide fun challenges for all. It gives ways up and around the Observer for bigger and lesser dare devils. The motor skills trained are important for children's physical confidence and their security in moving, for instance in the street. The senses of balance and space are trained whizzing down the slide. The sense of balance is fundamental for all other physical

skills. The platforms and nets are nice meeting points for socializing with friends.

产品编号 NAT526-0912	
产品信息概览	
长宽高尺寸	467x439x267 cm
适用年龄段	4+
容纳人数	14
颜色选择	



Observer

NAT526



Steering wheel

认知能力：可操作的方向盘可激发戏剧性游戏，从而提高语言和沟通能力。



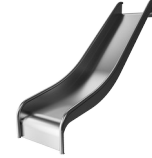
Open stairs

身体素质：stepping up the narrow stairway trains cross-coordination and spatial awareness, while developing leg muscles.



Teardrop handle

身体素质：develop upper body muscles, when e.g. pulling yourself up or hanging in your arms.



滑梯

身体素质：玩滑梯可以培养空间感和平衡感。此外，在直立向下坐时，核心肌肉也能得到锻炼。**社交情感：**轮流玩耍时可激发同理心。

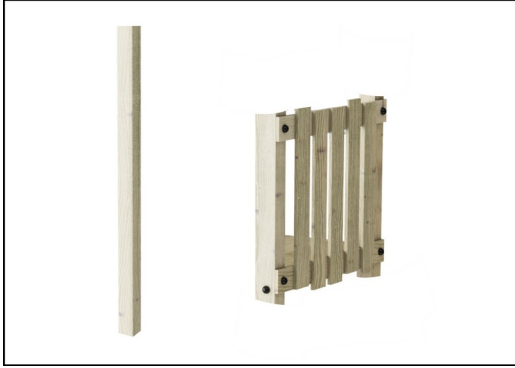


攀爬网

身体素质：训练跨体协调能力和肌肉力量。绳网的不对称也锻炼儿童的攀爬能力。**社交情感：**绳网中的大网格可以让更多的孩子坐在一起分享交流。

Observer

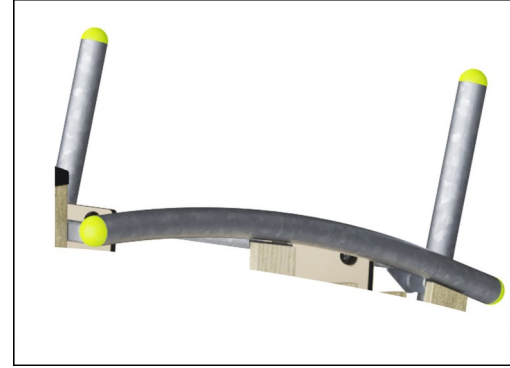
NAT526



立柱和板材由欧洲符合可持续来源的松木制成。根据 EN335 标准，木材用 Tanalith E3475 标准进行 3 级压力浸渍（相当于 NTR AB 级）。根据要求，可提供 FSC® 认证（FSC®C004450）。



19 毫米 EcoCore™ 面板。EcoCore™ 是一种高度耐用、环保的材料，不仅在使用后可回收利用，而且还包含由 100 % 食品包装可循环材料制成的芯。



钢表面在内部和外部均用无铅锌进行热浸镀锌。镀锌在外部环境中具有出色的耐腐蚀性，并且维护成本低。

产品编号 NAT526-0912

安装信息

最大跌落高度	232 cm
安全面积	36.0 m²
安装总时长	16.1
开挖量	1.36 m³
混凝土使用量	0.24 m³
标准入地深度	92 cm
运输重量	454 kg
固定选项	入地 ✓ 地表 ✓

质保信息

EcoCore HDPE	终身质保
镀锌钢结构	终身质保
松木	10 年
绳网	10 年
承保零部件	10 年



Corocord ropes of UV-stabilized PES rope strands with inner steel cable reinforcement. The polyester yarn is made from +95% post-consumer materials and is inductively melted onto each strand. PES has high strength with excellent resistance to abrasion and UV radiation. The rope loops are assembled by aluminum connectors.



后端盖由注塑成型的优质尼龙（PA6）制成。PA6 具有良好的耐磨性和冲击强度，并且具有紫外线稳定性。端盖可保护垂直放置的立柱，以确保较长的使用寿命。



滑梯由 EcoCore™ 侧板和不锈钢滑床 t=2mm 组合而成。



Sustainability Data

NAT526



从原材料到成品	CO ₂ 排放总量	CO ₂ 排放量 / 千克	回收的原料
	kg CO ₂ e	kg CO ₂ e/kg	%
NAT526-0912	641.10	1.67	38.40

这些因素采用的总体框架为环保产品声明 (EPD)，该声明可量化“产品生命周期的环保信息，并对相同功能的产品进行对比” (ISO, 2006)。在遵循该框架的同时，对从原材料到制造的整个产品阶段 (A1-A3) 应用生命周期评估法。

Kompan A/S
C.F. Tietgens Boulevard 32C
DK-5220 Odense SØ
Denmark



Verification of CO₂ calculation of: Nature play



Data version no. 2023-10-05

The CO₂ calculation and data are in compliance with the principles of a carbon footprint impact according to the GHG protocol (Greenhouse Gas Protocol), Scope 3, cradle to gate related to all individual components in the product category: "Nature play" represented by item no.: NR0409-0621.

(Scope 3 emissions include emission sources in the upstream and downstream value chain).

Date: 30. October 2023 | Valid until: 30. October 2025
Verified by:

Julie Marie Vejsgaard Larsen, LCA & EPD Consultant

Verification based on report: Validation of CO₂ calculation of 9 categories of Kompan product line, version 1.0, prepared by: Bureau Veritas HSE, Denmark: Julie M. V. Larsen.

Publication date: 30. October 2023

By Bureau Veritas HSE
www.bureauveritas.dk
+45 7731 1000

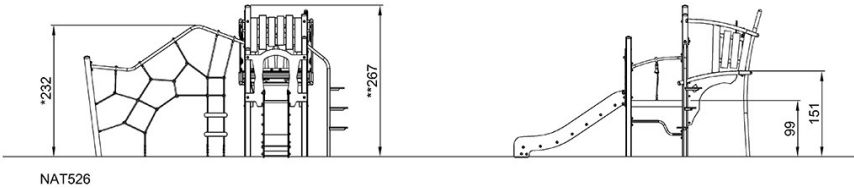
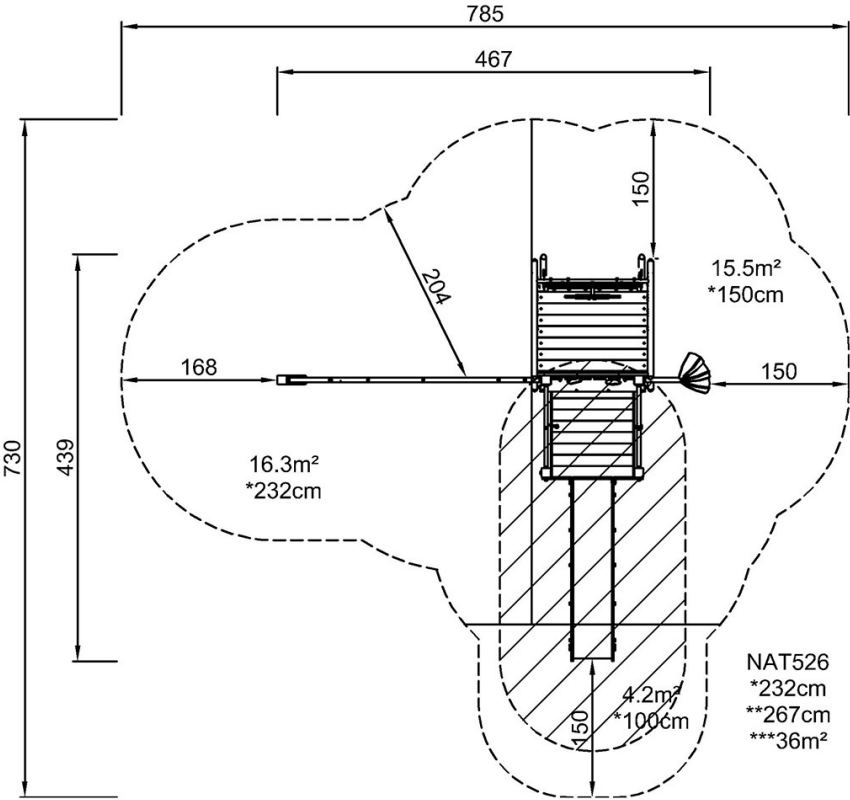


Observer

NAT526

最大跌落高度 | 总高度 | 安全区域

最大跌落高度 | 总高度



[点击查看俯视图](#)

[点击查看侧面图](#)