




Spinner Plate

ELE500008



Item no. ELE500008-3417F	
General Product Information	
Dimensions LxWxH	1'4"x1'4"x1'2"
Age group	2 - 12
Play capacity (users)	1
Color options	  



That's funny! The turning seat of the Spinner Plate makes older children laugh out from joy! It matches the favorite stool or chair, which can rotate and help you stay updated on events in all directions. This functionality in the playground is perfect. The social function is evident, and there is room for two friends seated or standing. This trains cooperation and

turn-taking skills. The physical play and training in rotating standing or seated is the main fun factor. The rotation trains the sense of balance and the core muscles. The sense of balance is fundamental for all other skills. A strong sense of balance helps children avoid falls and navigate the world securely when playing actively. It positively affects the ability to sit still

and concentrate in school. The Spinner Plate is an important, responsive activity for play and active breaks.



Spinner Plate

ELE500008



Spinner plate

Physical: training sense of balance and posture control when rotating while standing or seated. **Social-Emotional:** rotating together when seated or standing supports cooperation and turn-taking skills.



Spinner Plate

ELE500008



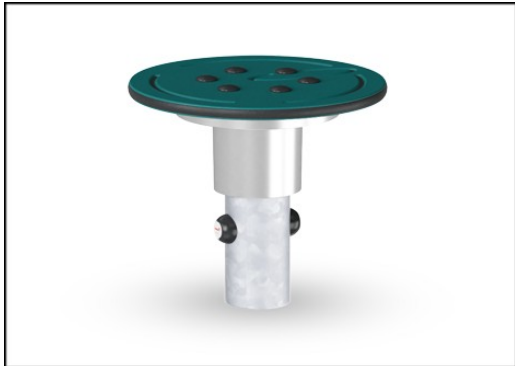
Panels of 19mm EcoCore™. EcoCore™ is a highly durable, eco friendly material, which is not only recyclable after use, but also consists of a core produced from 100% recycled material.



Heavy duty engineered bearing system with single row deep groove ball bearings with rubber seals. The fully closed bearing construction is lifetime lubricated and maintenance free. The bearing system has an integrated drag brake according to global safety standards.



The steel surfaces are hot-dip galvanized inside and outside with lead-free zinc. The galvanization has excellent corrosion resistance in outside environments and requires minimal maintenance.



KOMPAN GreenLine versions are designed with the most environmentally friendly materials with the lowest possible CO2e emission factor such as EcoCore™ panels of 100% post-consumer recycled ocean waste.

Item no. ELE500008-3417F	
Installation Information	
Max. fall height	1'2"
Safety surfacing area	139ft²
Total installation time	1.4
Excavation volume	0.13yd³
Concrete volume	0.12yd³
Footing depth (standard)	2'0"
Shipment weight	33lbs
Anchoring options	In-ground ✓ Surface ✓
Warranty Information	
Bearing construction	5 Years
EcoCore HDPE	Lifetime
Hot dip galvanized steel	Lifetime
Spare Parts Availability	10 Years

Elevated activities 0	Accessible elevated activities	Accessible ground level activities	Accessible ground level play types
Present	0	1	1
Required	0	0	0



Sustainability Data

ELE500008



Cradle to Gate A1-A3	Total CO ₂ emission	CO ₂ e/kg	Recycled materials
	kg CO ₂ e	kg CO ₂ e/kg	%
ELE500008-3417F	43.40	3.03	46.60

The overall framework applied for these factors is the Environmental Product Declaration (EPD), which quantifies "environmental information on the life cycle of a product and enable comparisons between products fulfilling the same function" (ISO, 2006). This follows the structure and applies a Life-Cycle Assessment approach to the entire Product stage from raw material through manufacturing (A1-A3))

Kompan A/S
C.F. Tietgens Boulevard 32C
DK-5220 Odense SØ
Denmark



Verification of CO₂ calculation of: Freestanding play equipment



Data version no. 2023-10-05

The CO₂ calculation and data are in compliance with the principles of a carbon footprint impact according to the GHG protocol (Greenhouse Gas Protocol), Scope 3, cradle to gate related to all individual components in the product category: "Freestanding play equipment" represented by item no.: GXY916012-3417.

(Scope 3 emissions include emission sources in the upstream and downstream value chain).

Date: 30. October 2023 | Valid until: 30. October 2025
Verified by:

Julie Marie Vejsgaard Larsen, LCA & EPD Consultant

Verification based on report: Validation of CO₂ calculation of 9 categories of Kompan product line, version 1.0, prepared by: Bureau Veritas HSE, Denmark: Julie M. V. Larsen.

Publication date: 30. October 2023

By Bureau Veritas HSE
www.bureauveritas.dk
+45 7731 1000

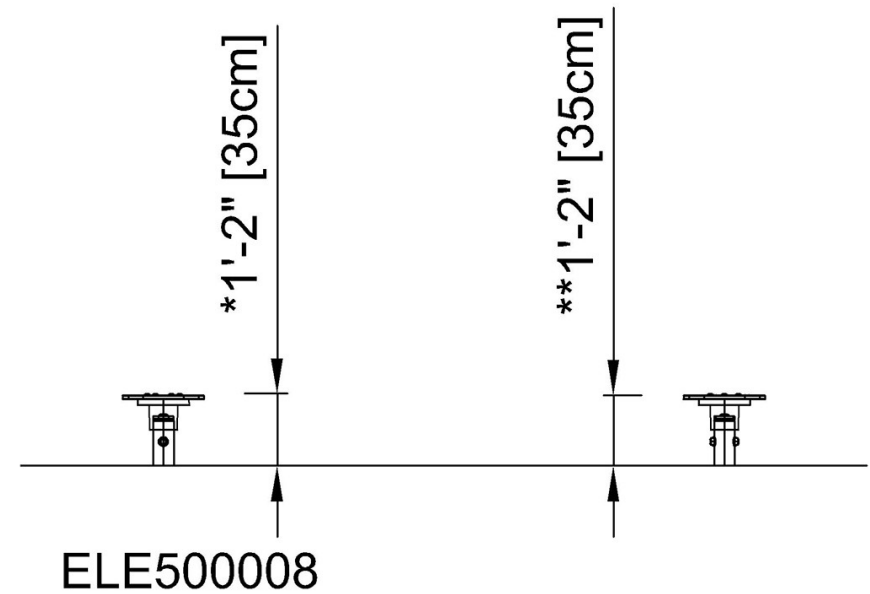
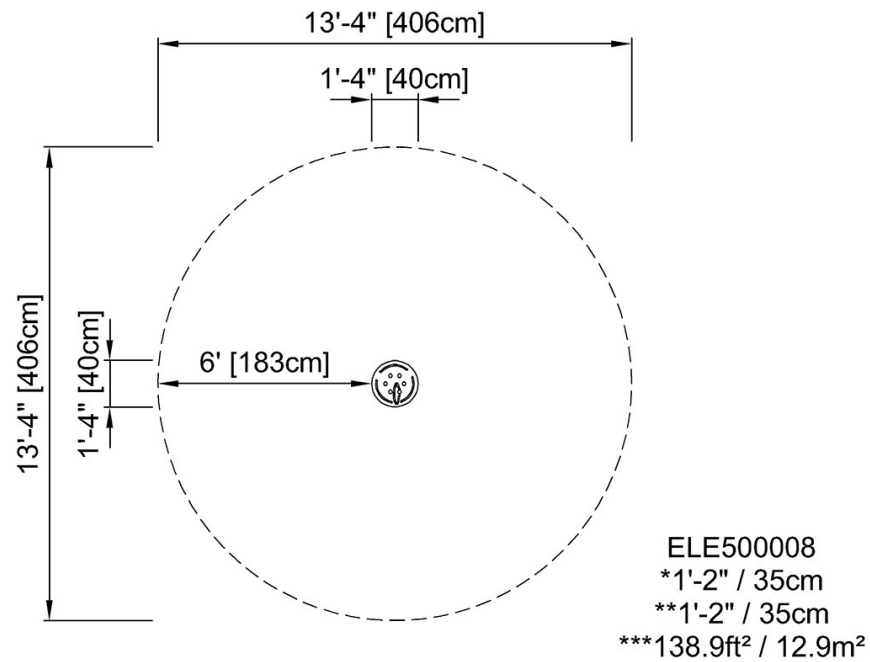


Spinner Plate

ELE500008

* Max fall height | ** Total height | *** Safety surfacing area

* Max fall height | ** Total height



[Click to see TOP VIEW](#)

[Click to see SIDE VIEW](#)